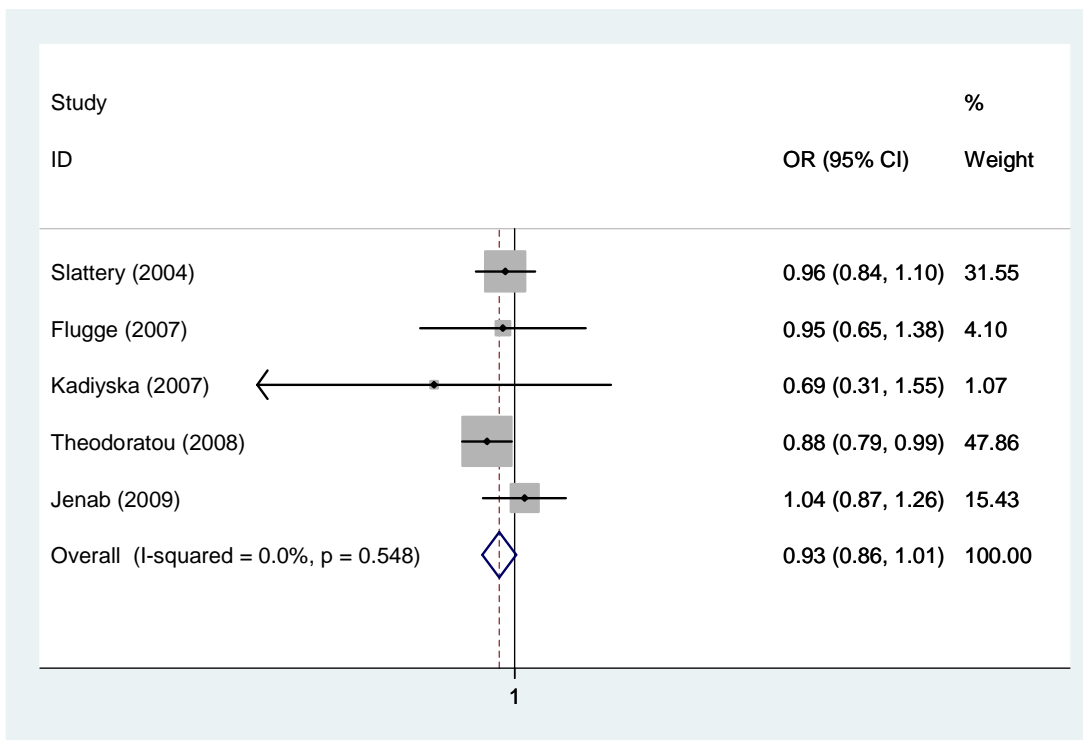
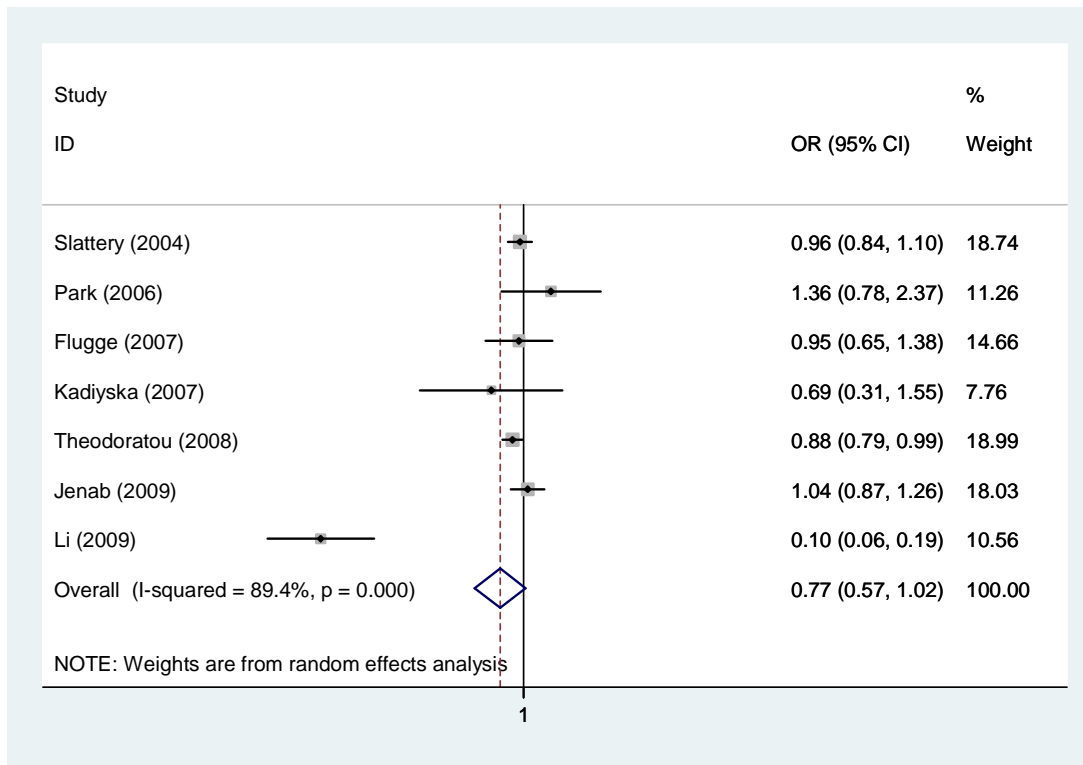
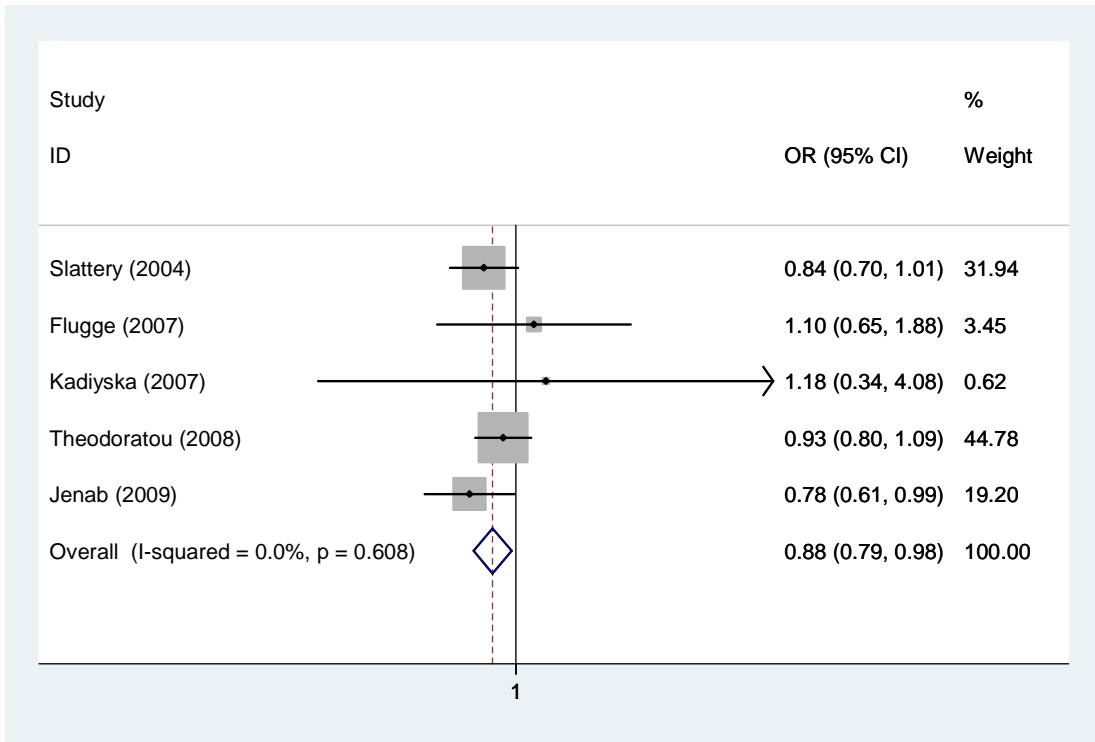
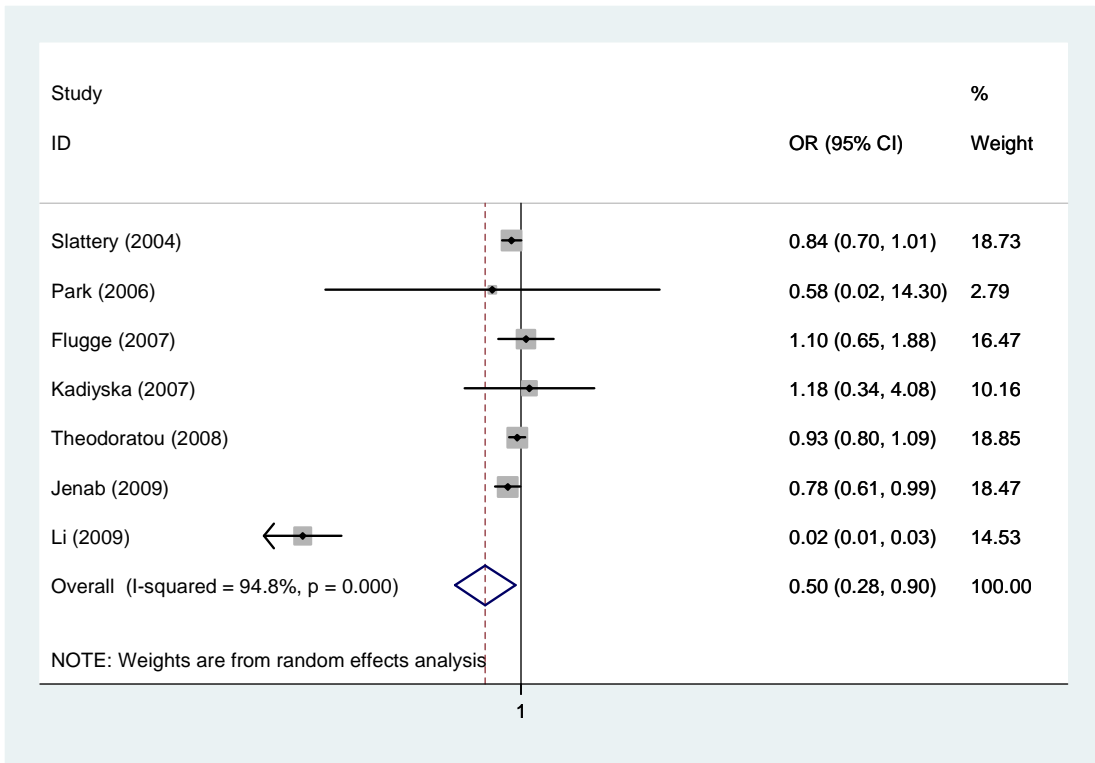


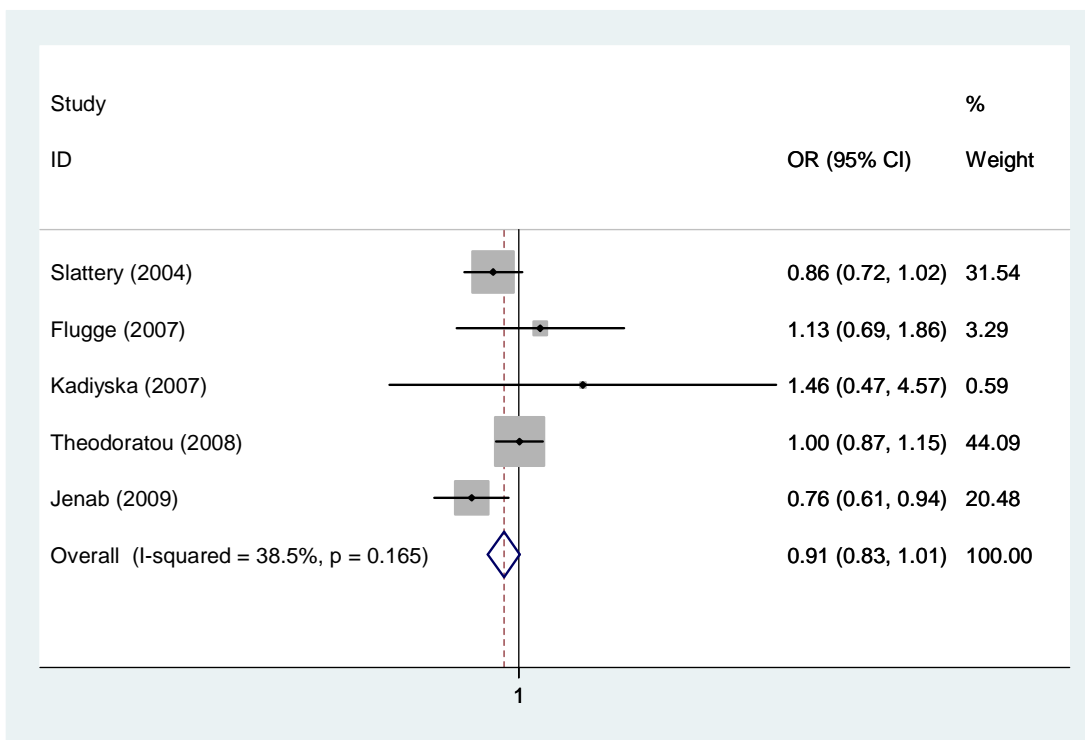
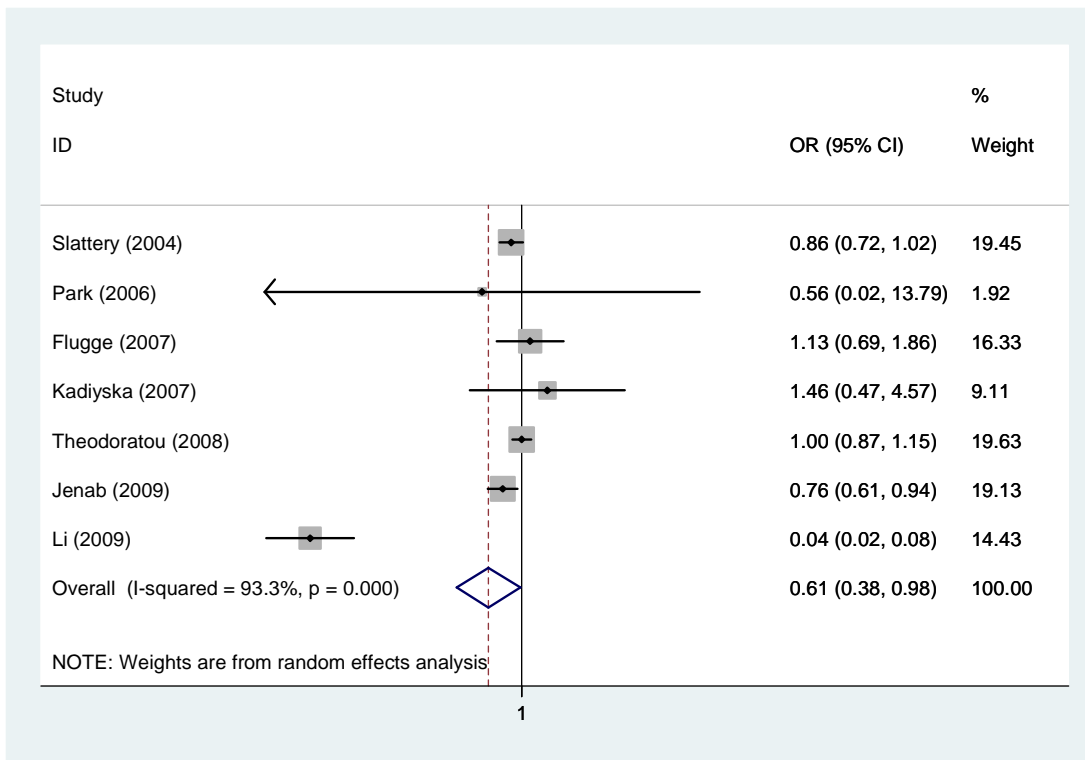
FOREST PLOTS



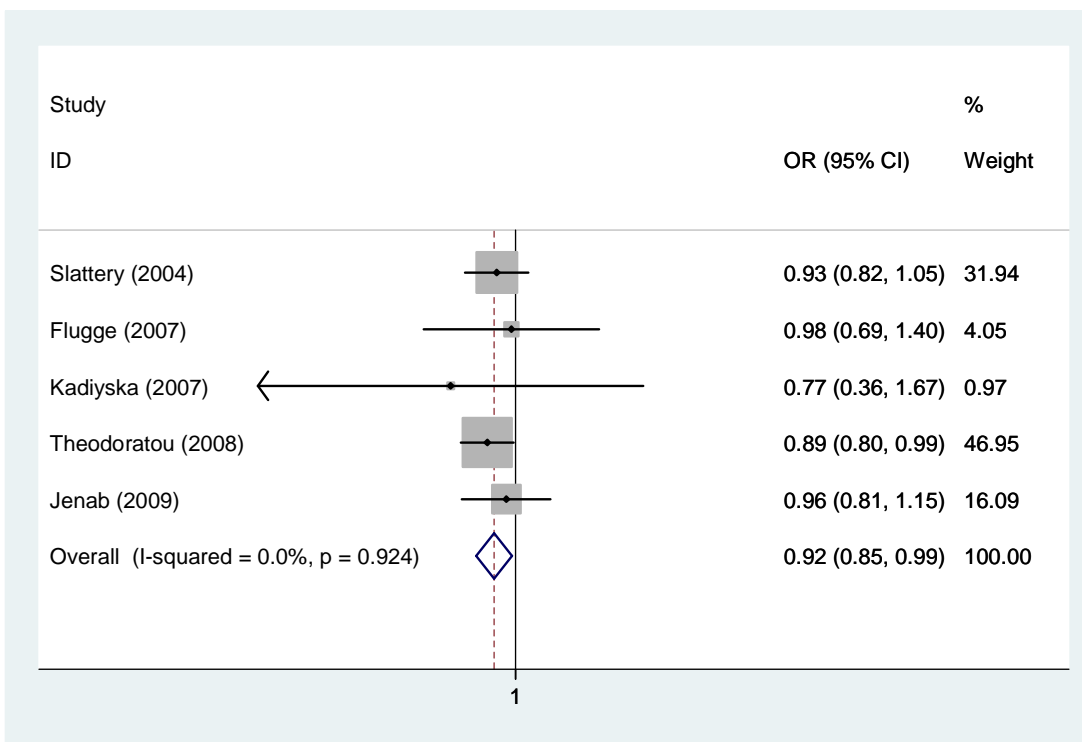
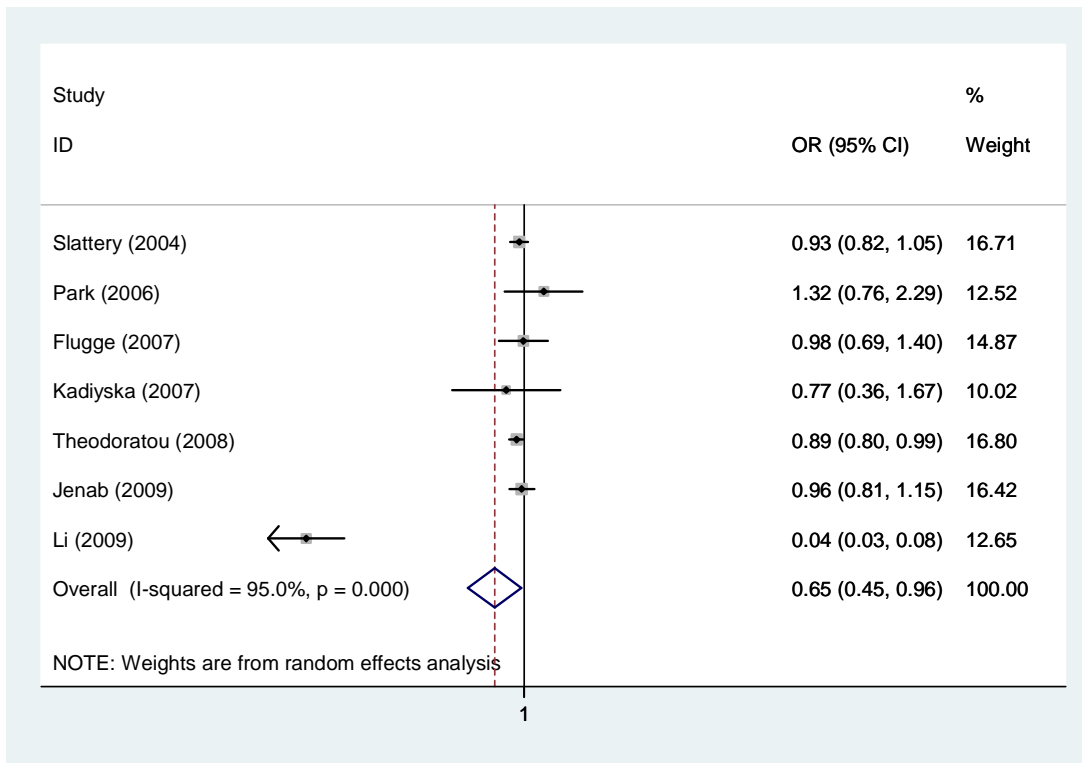
VDR BsmI Additive model: wt/var vs. wt/wt (random/fixed model) [Second graph in white only populations]



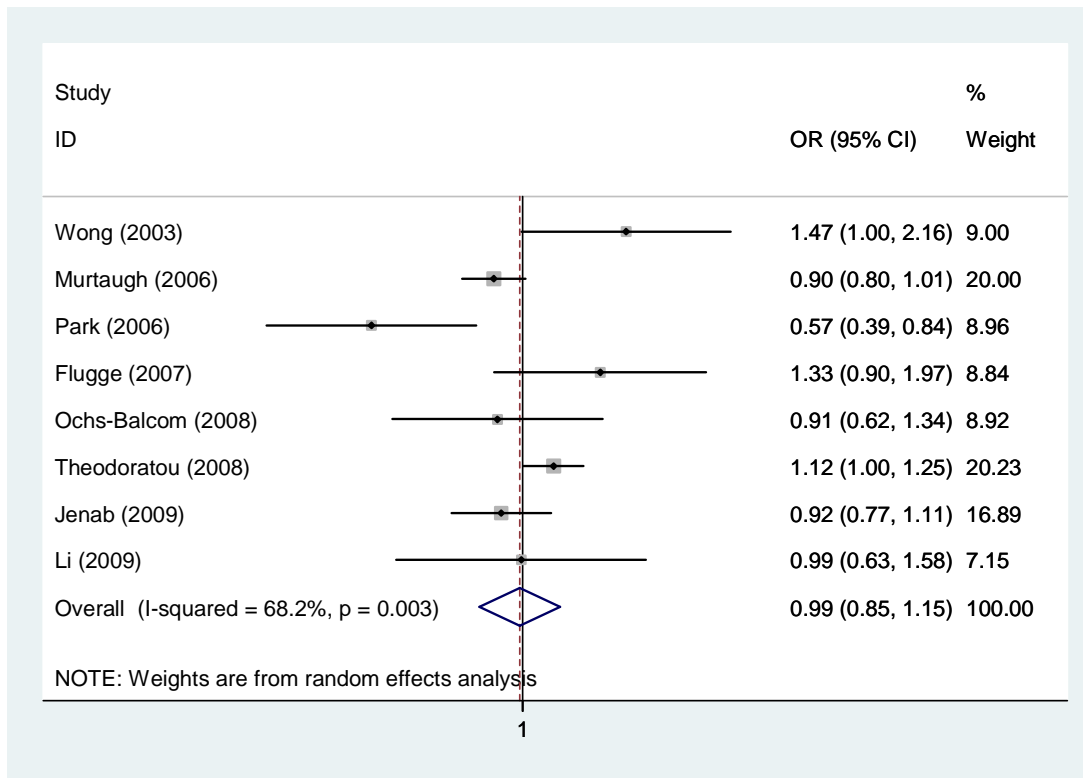
VDR BsmI Additive model: var/var vs. wt/wt (random/fixed model) [Second graph in white only populations]



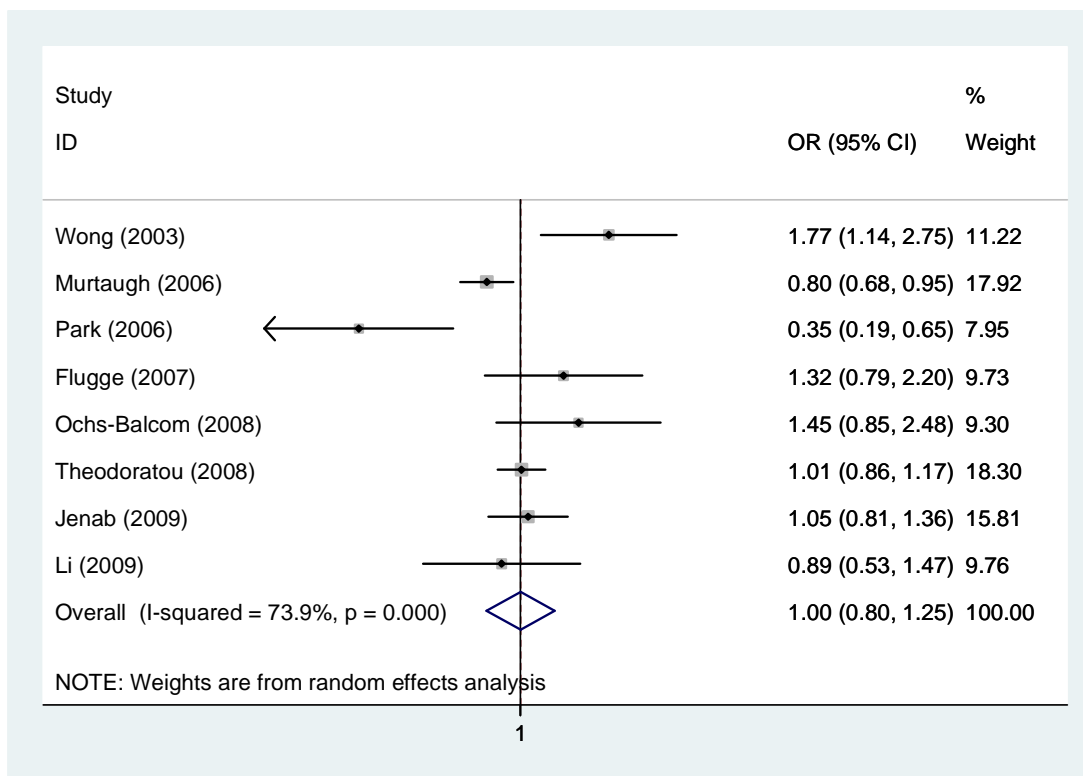
VDR BsmI Recessive model: var/var vs. wt/wt & wt/var (random/fixed model) [Second graph in white only populations]



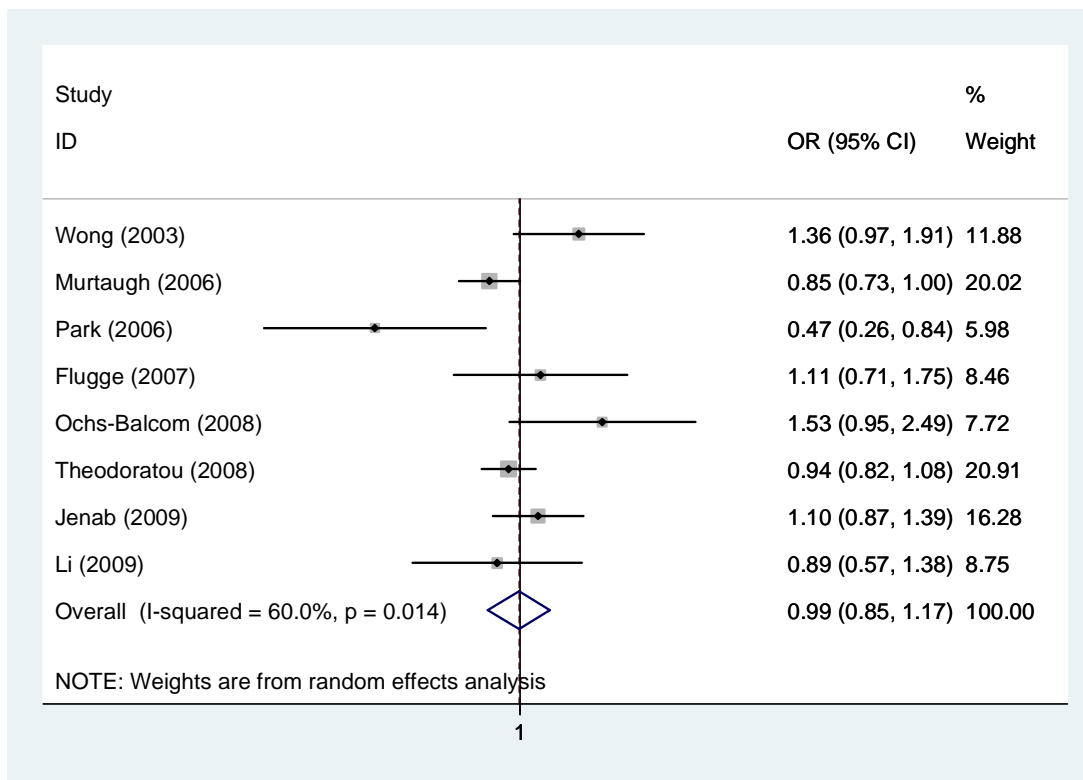
VDR BsmI Dominant model: wt/var & var/var vs. wt/wt & wt/var (random model) [Second graph in white only populations]



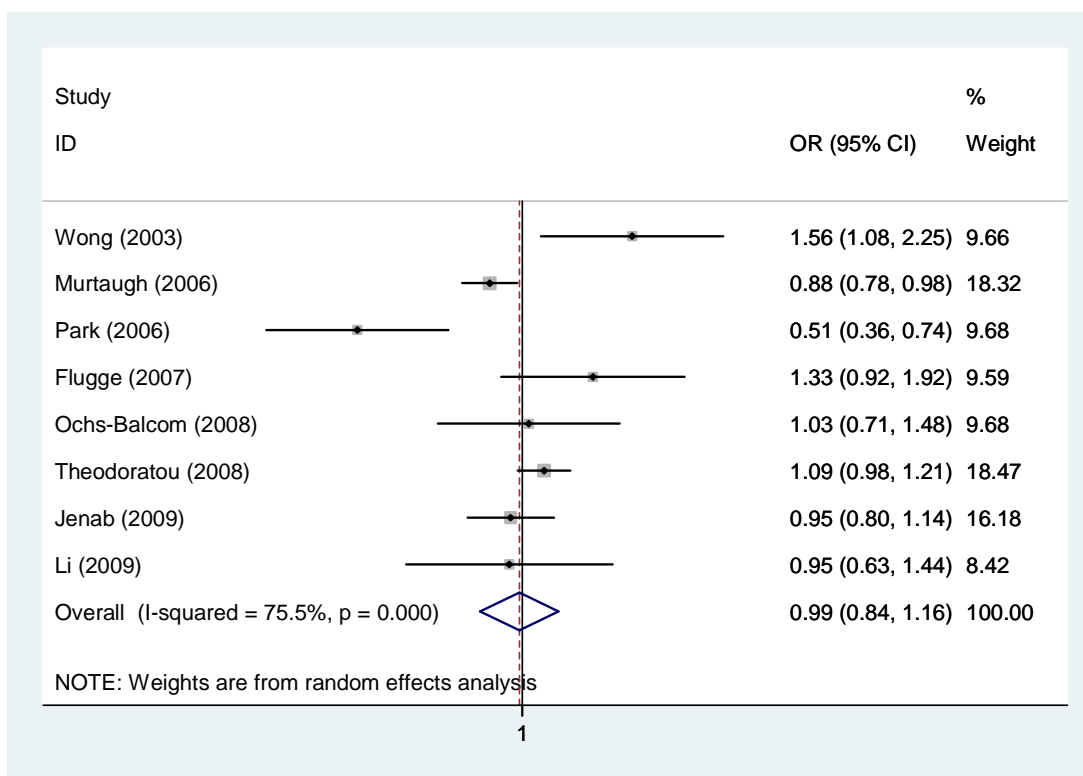
VDR FokI Additive model: wt/var vs. wt/wt (random model)



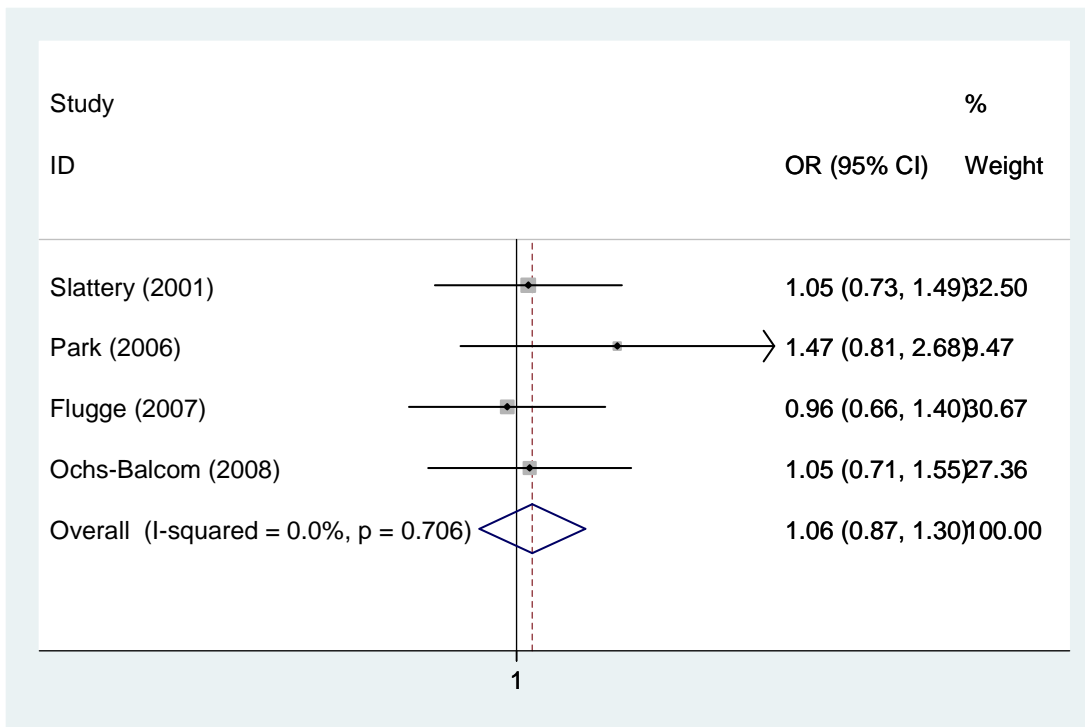
VDR FokI Additive model: var/var vs. wt/wt (random model)



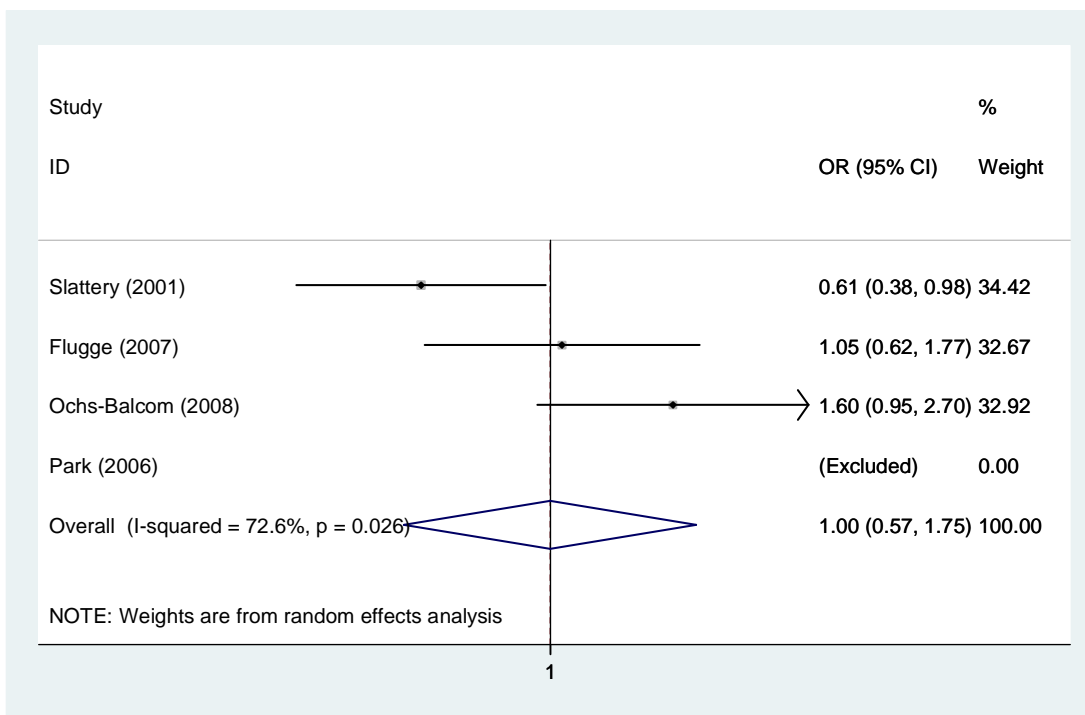
VDR FokI Recessive model: var/var vs. wt/wt & wt/var (random model)



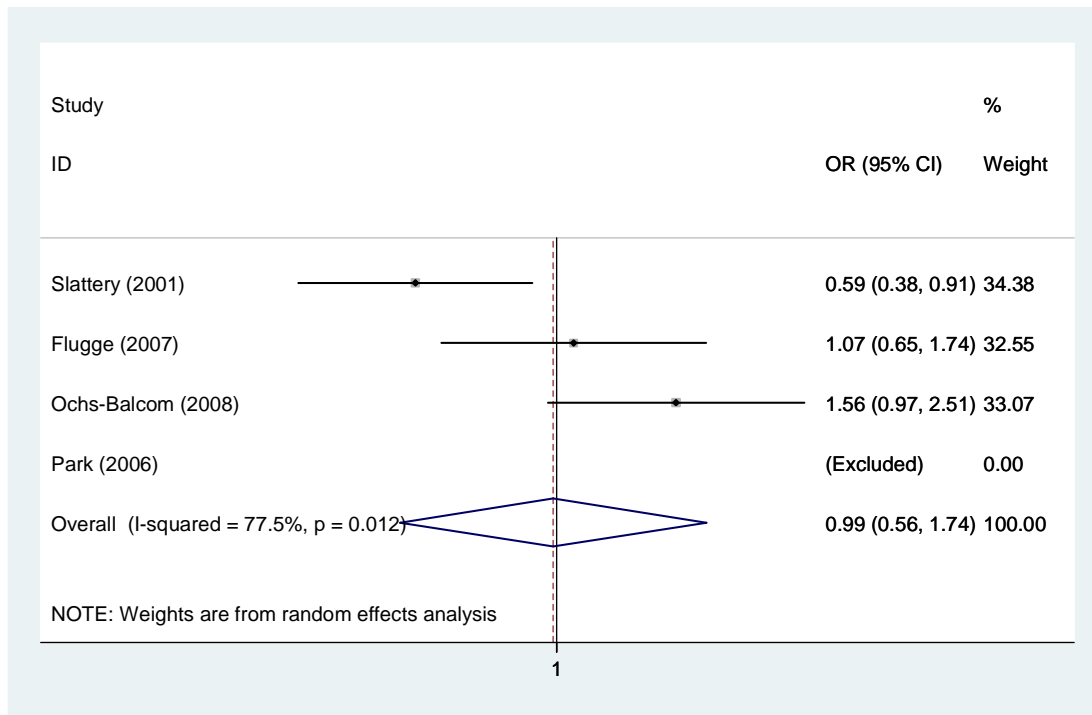
VDR FokI Dominant model: wt/var & var/var vs. wt/wt & wt/var (random model)



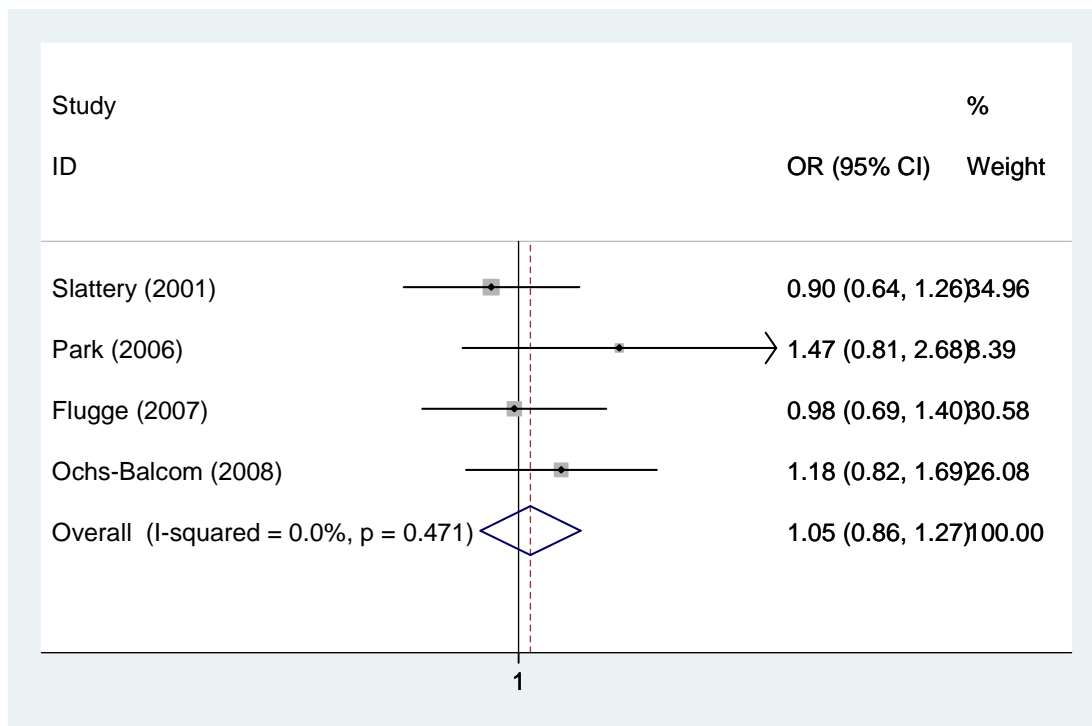
VDR TaqI Additive model: wt/var vs. wt/wt (fixed model)



VDR TaqI Additive model: var/var vs. wt/wt (random model)



VDR TaqI Recessive model: var/var vs. wt/wt & wt/var (random model)



VDR FokI Dominant model: wt/var & var/var vs. wt/wt & wt/var (fixed model)