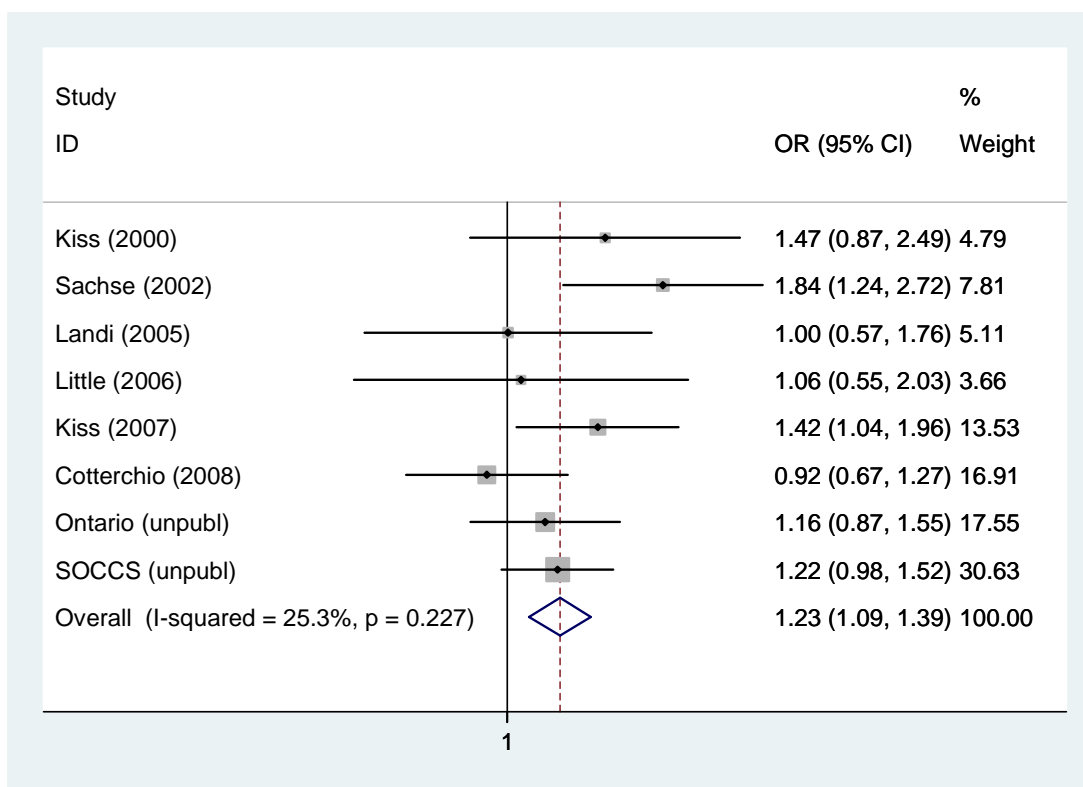
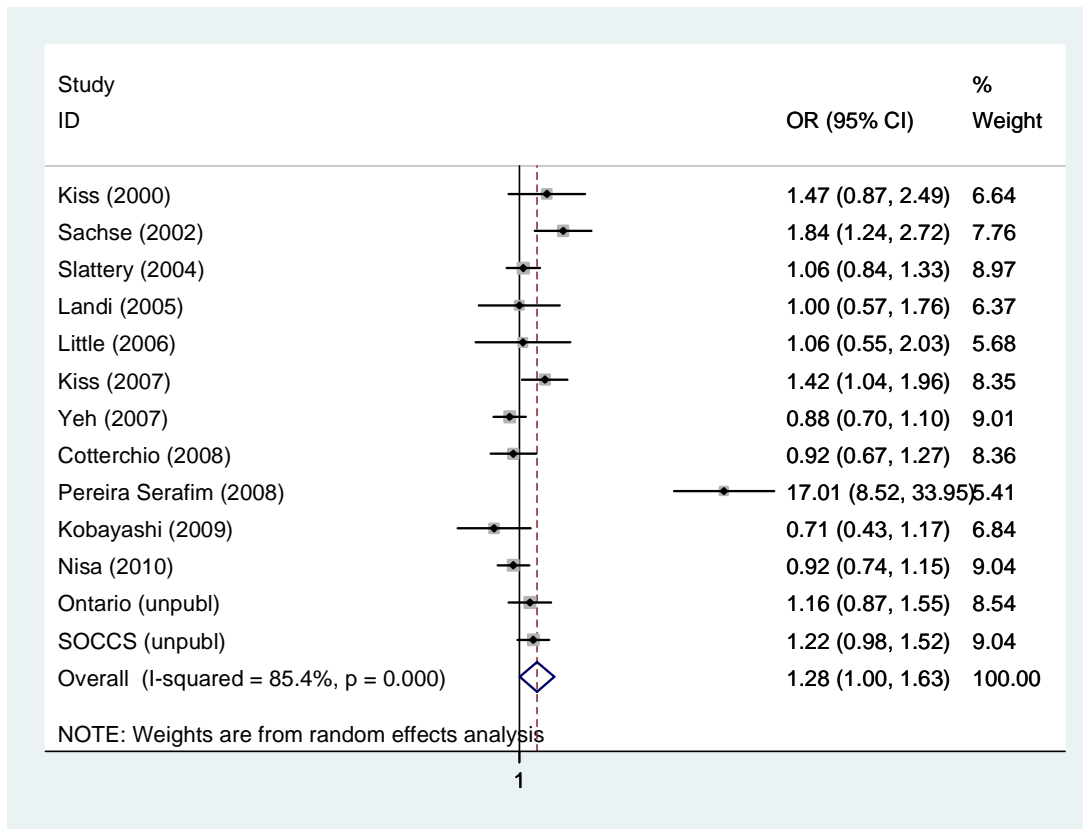
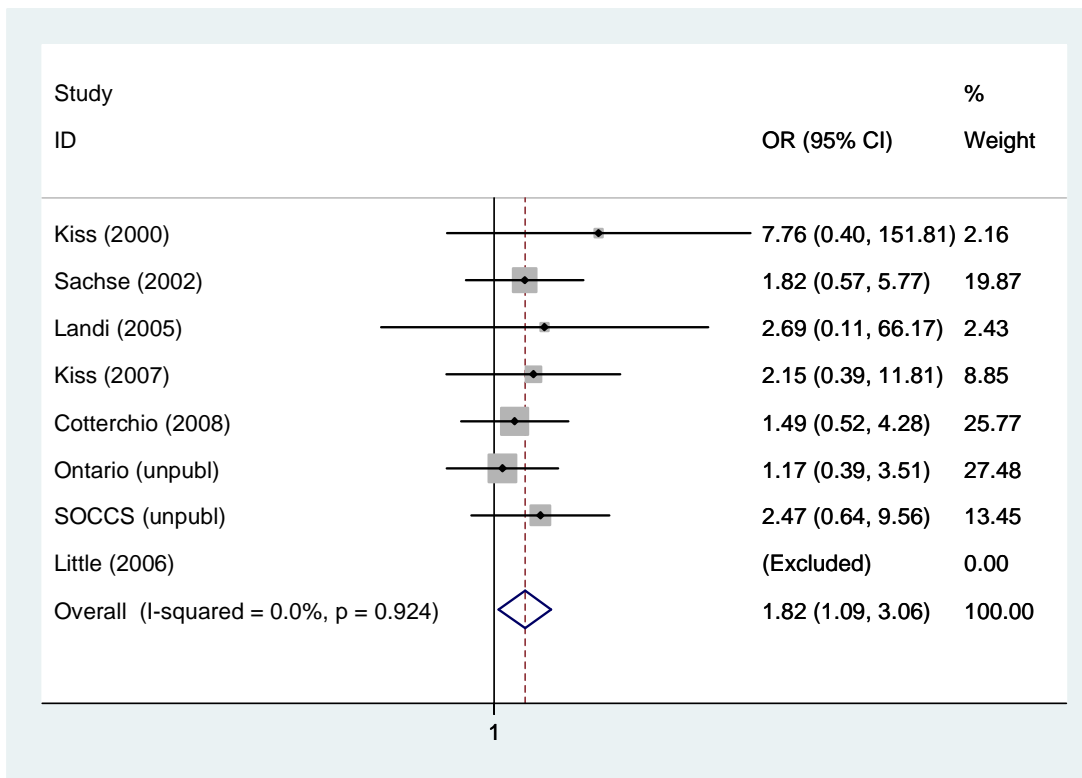
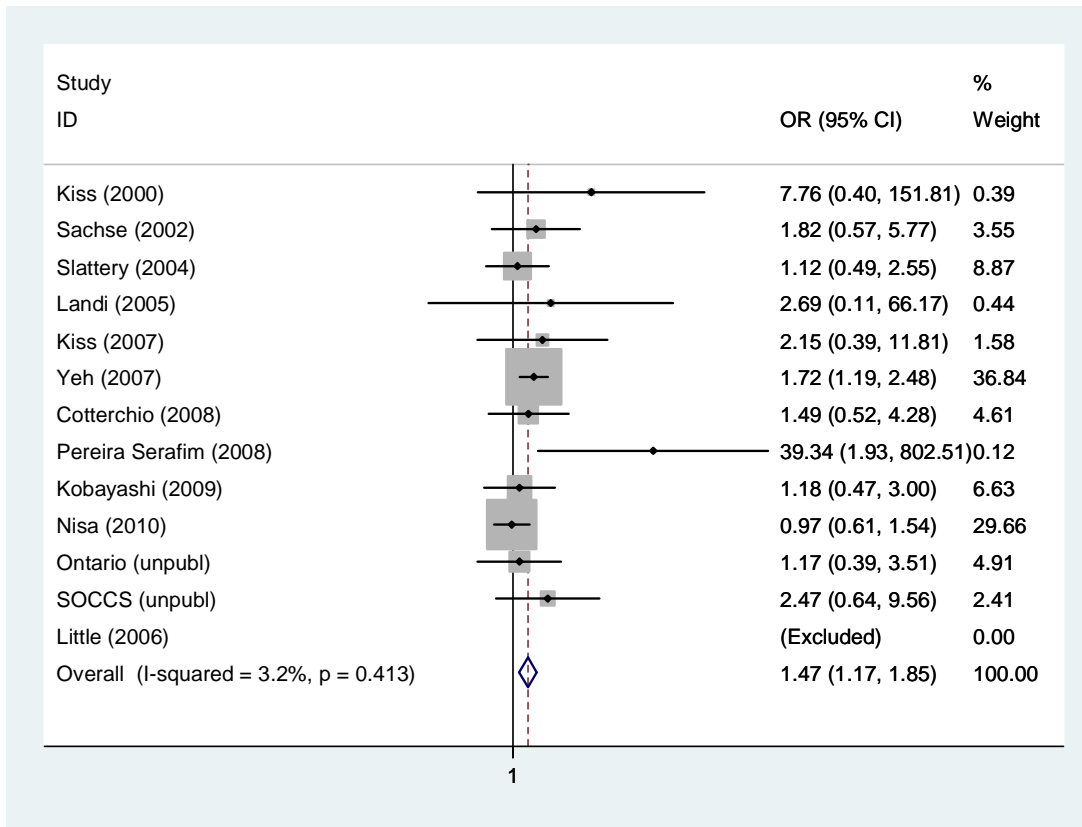


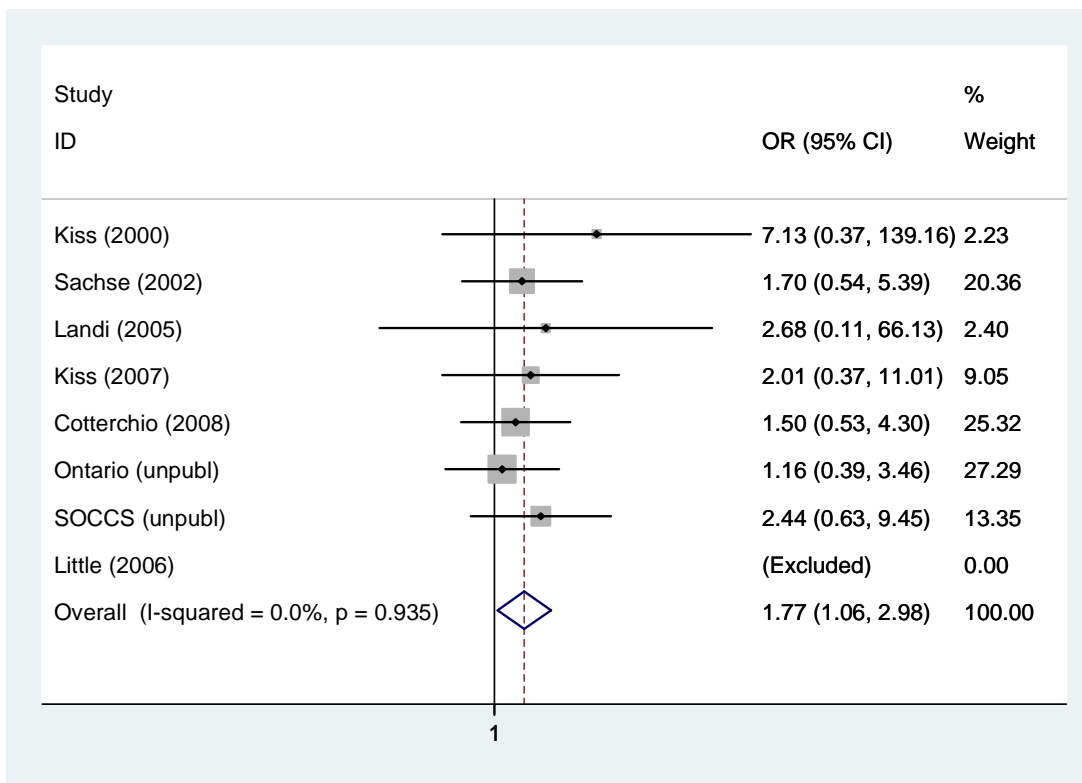
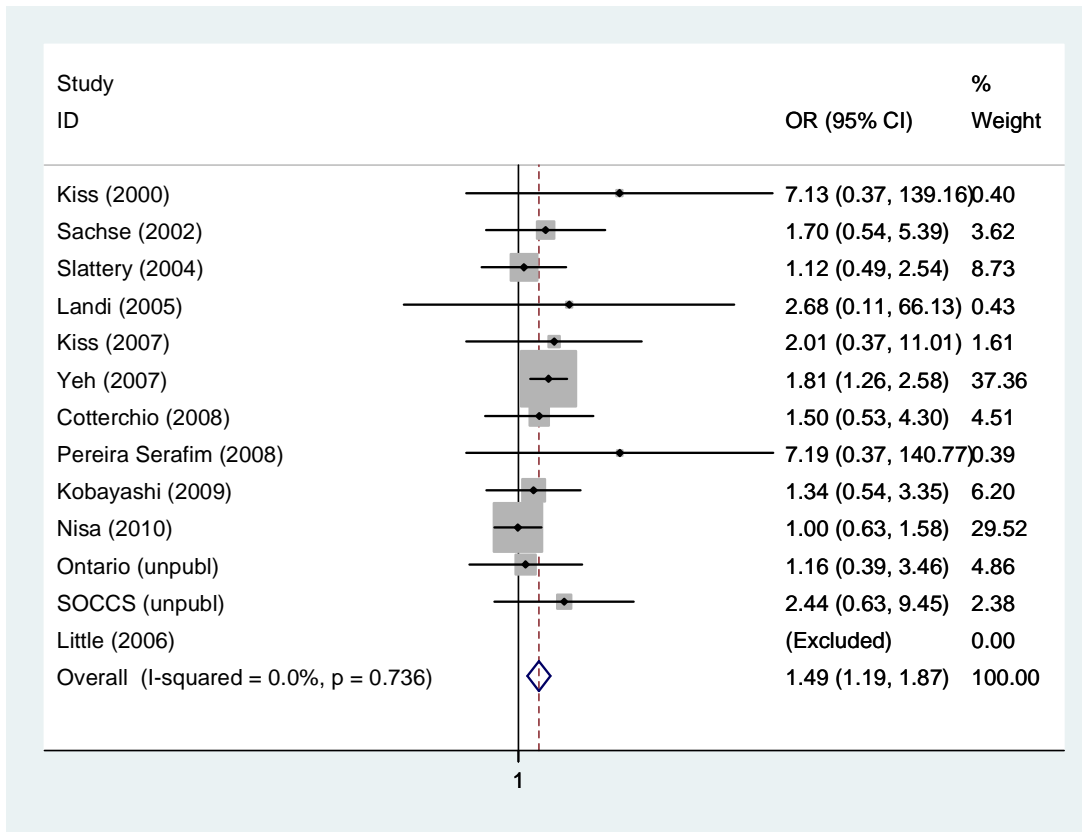
## FOREST PLOTS



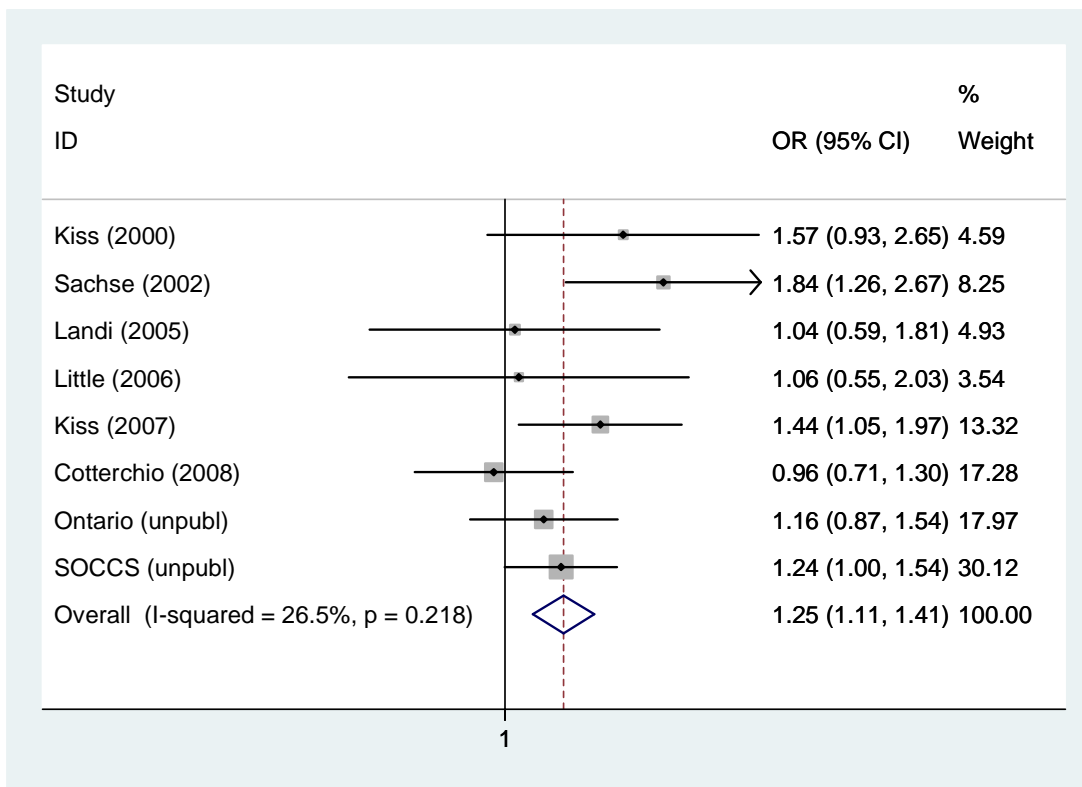
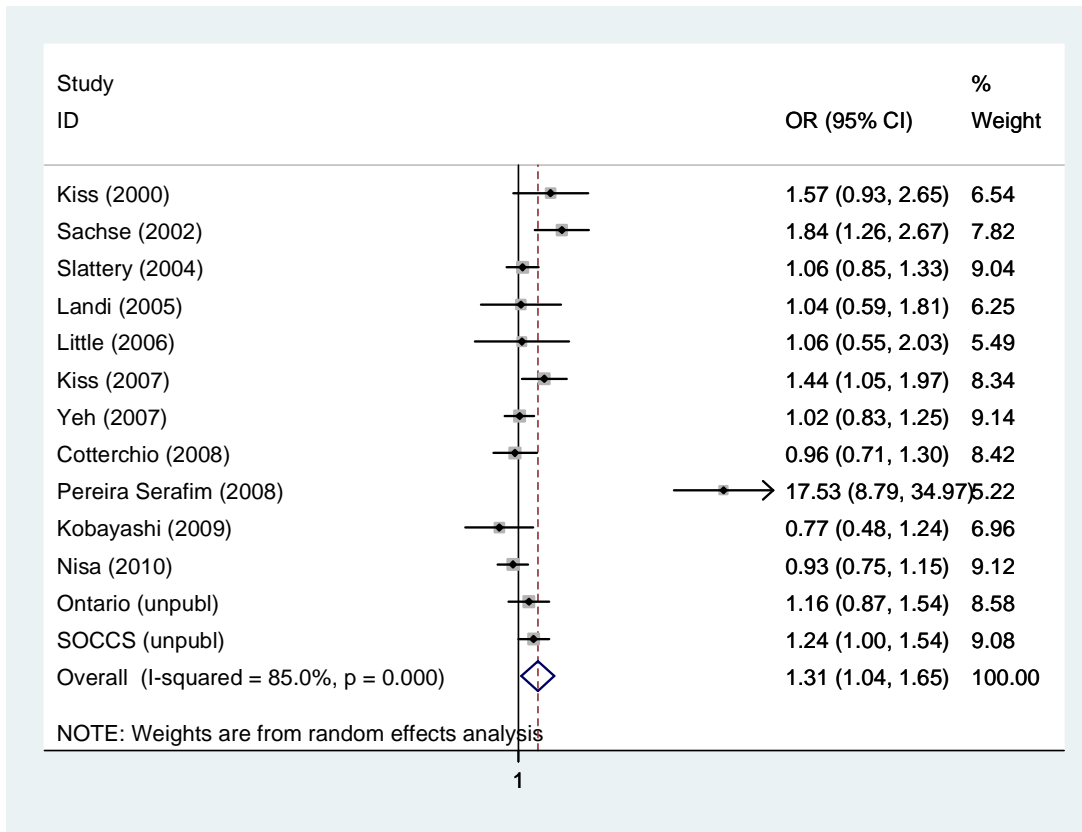
**CYP1A1 2454A>G Additive model: wt/var vs. wt/wt (random model) [Second graph in white only populations]**



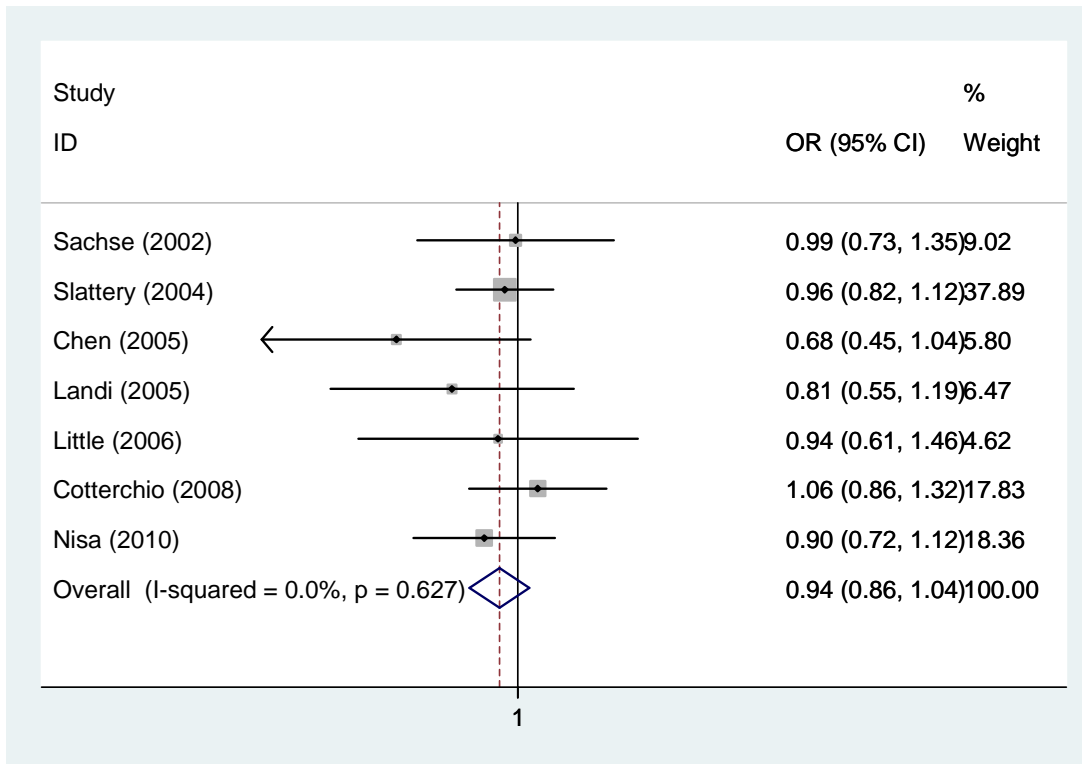
**CYP1A1 2454A>G Additive model: var/var vs. wt/wt (fixed model) [Second graph in white only populations]**



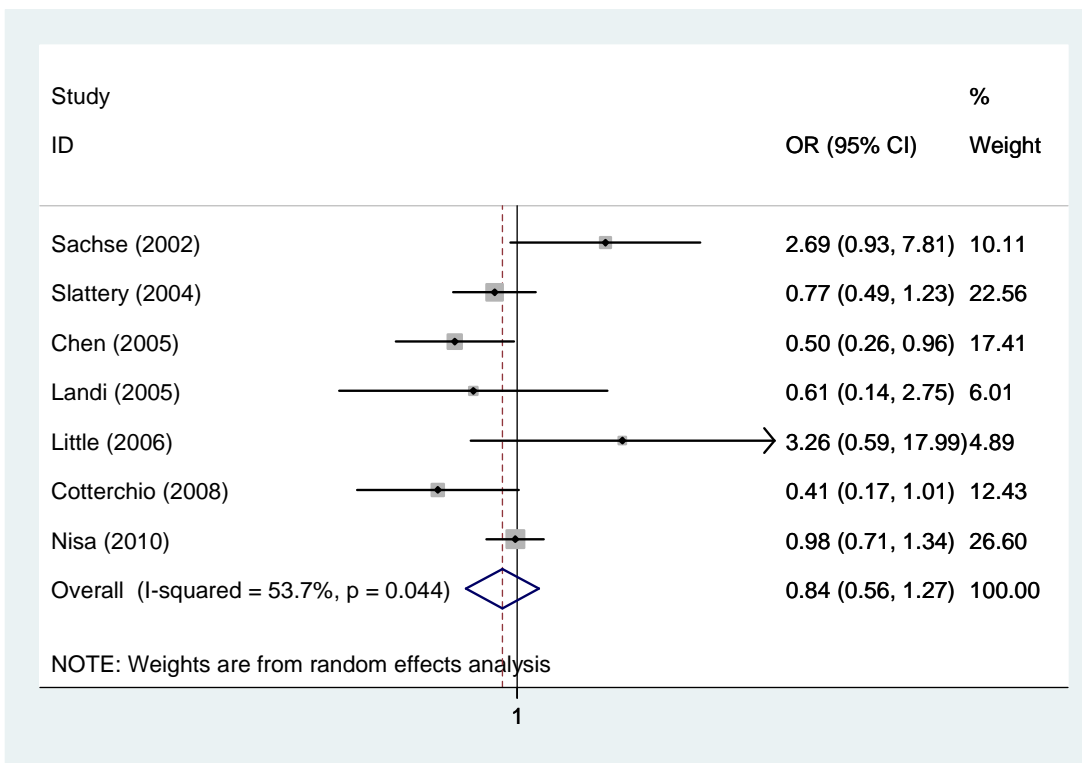
**CYP1A1 2454A>G Recessive model: var/var vs. wt/wt & wt/var (fixed model) [Second graph in white only populations]**



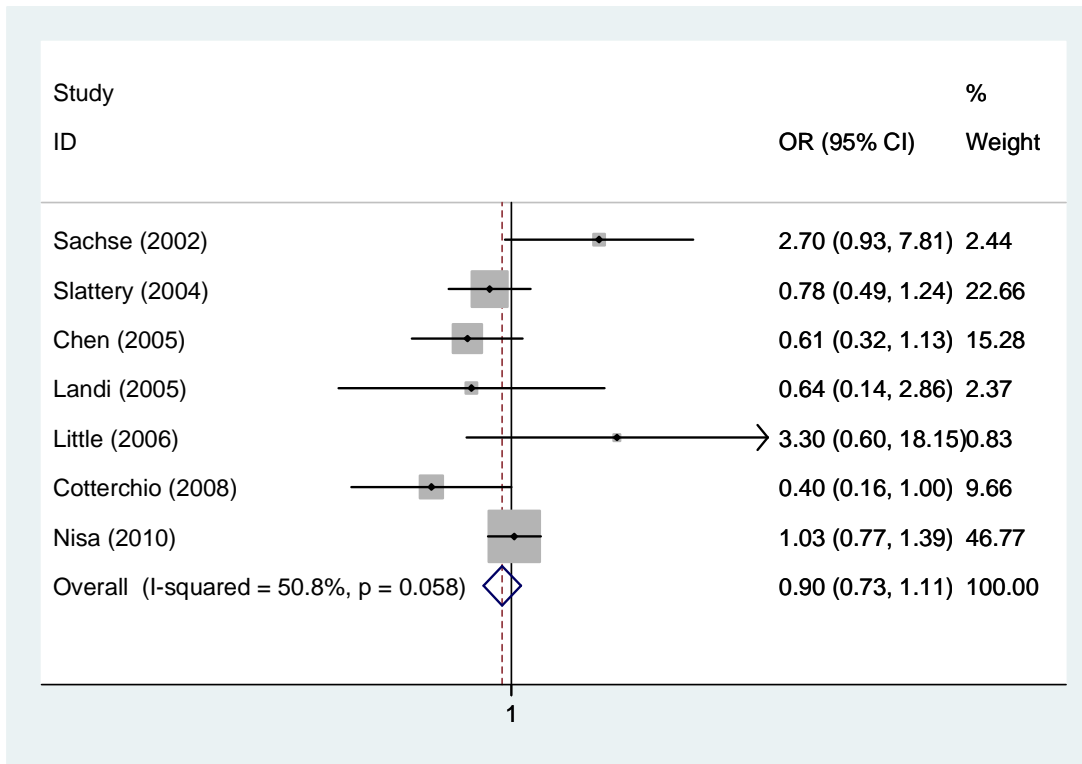
**CYP1A1 2454A>G Dominant model: wt/var & var/var vs. wt/wt & wt/var (random model)**  
**[Second graph in white only populations]**



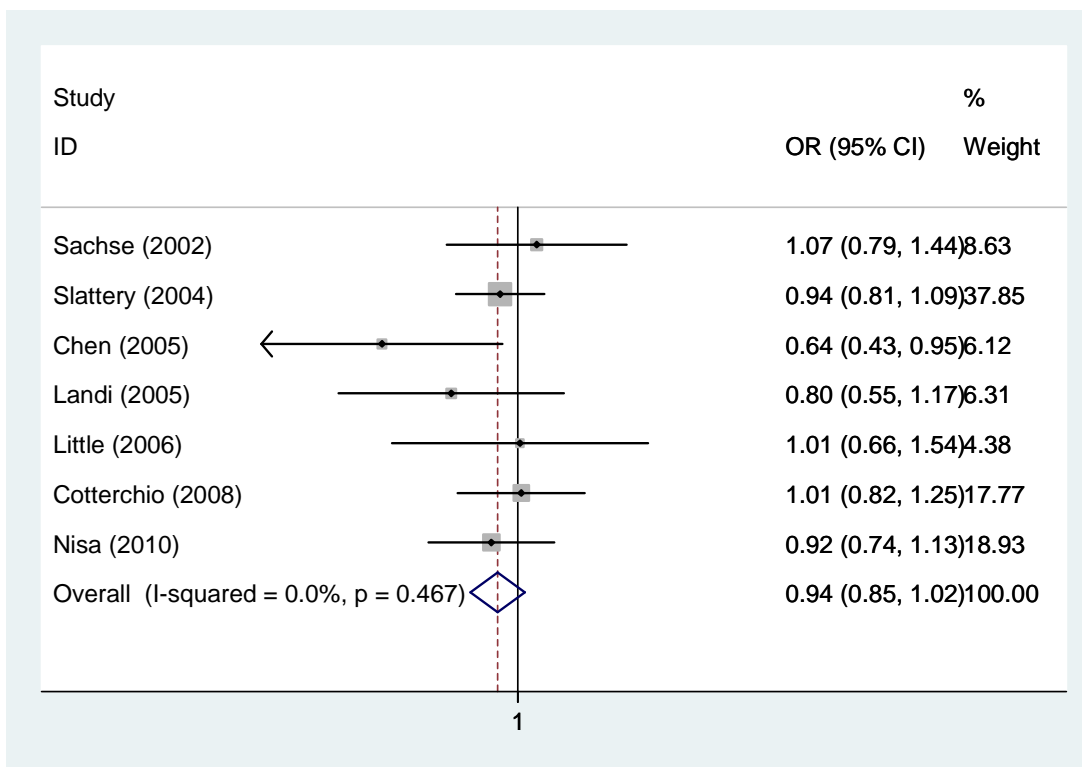
**CYP1A1 3698T>C Additive model: wt/var vs. wt/wt (fixed model)**



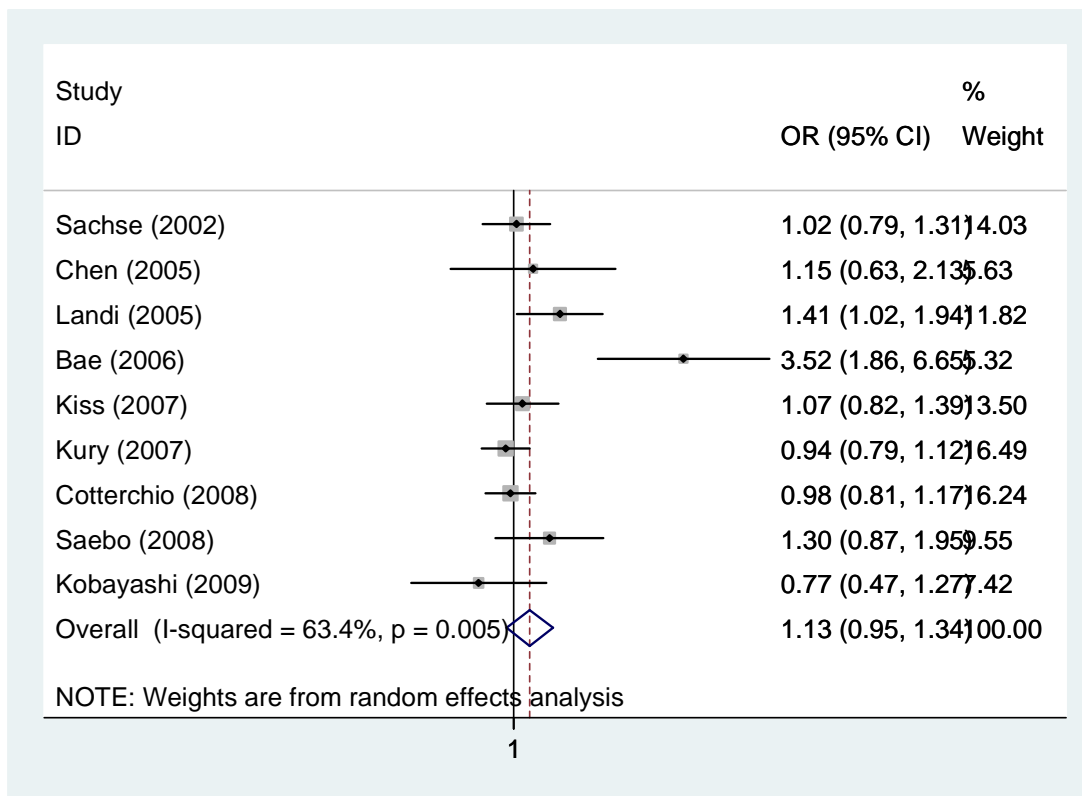
**CYP1A1 3698T>C Additive model: var/var vs. wt/wt (random model)**



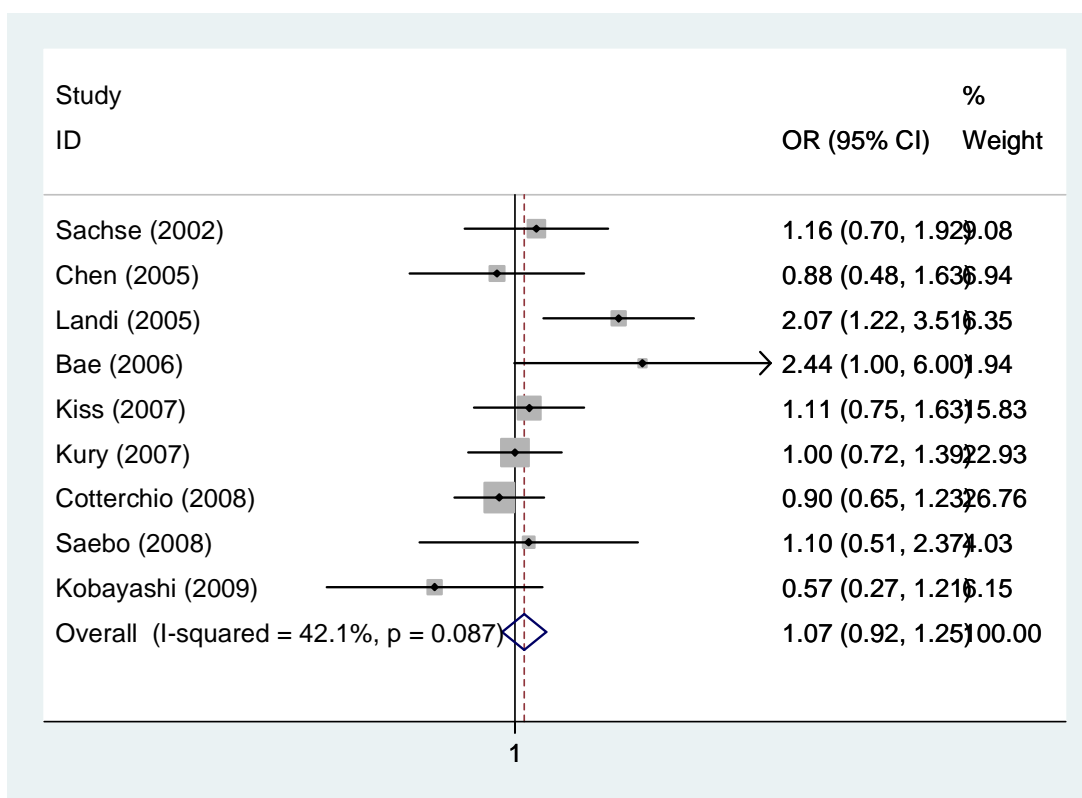
**CYP1A1 3698T>C Recessive model: var/var vs. wt/wt & wt/var (fixed model)**



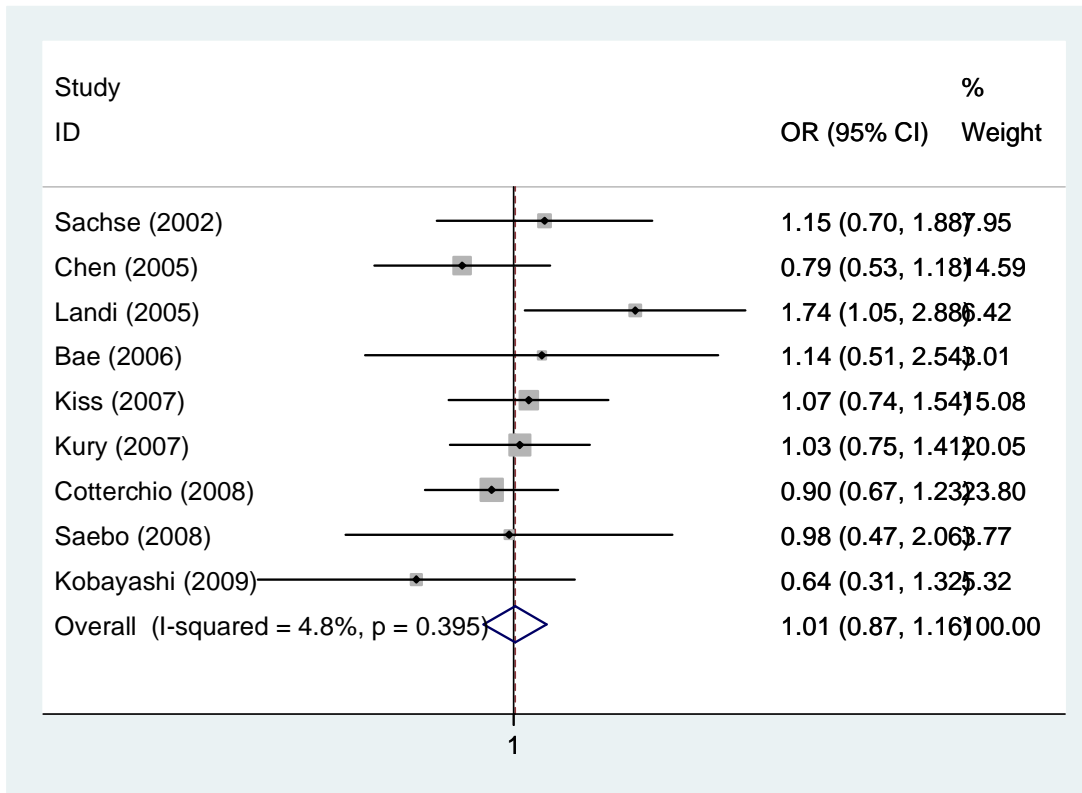
**CYP1A1 3698T>C Dominant model: wt/var & var/var vs. wt/wt & wt/var (fixed model)**



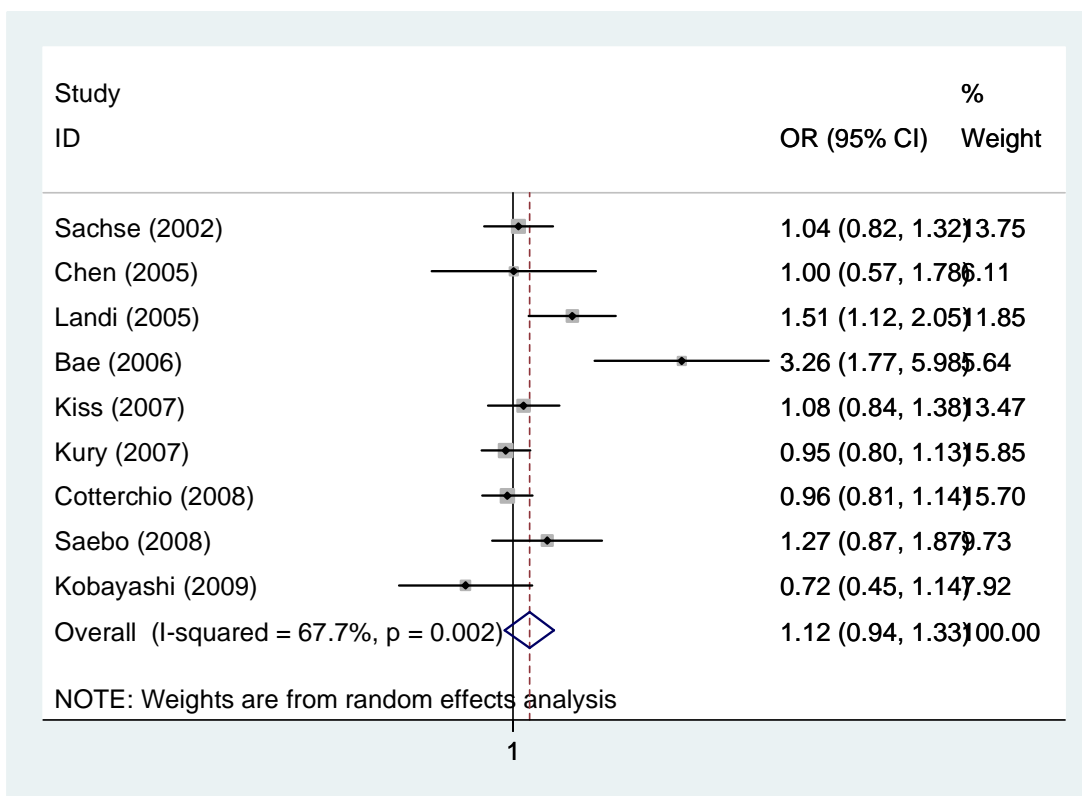
**CYP1A2 163C>A Additive model: wt/var vs. wt/wt (random model)**



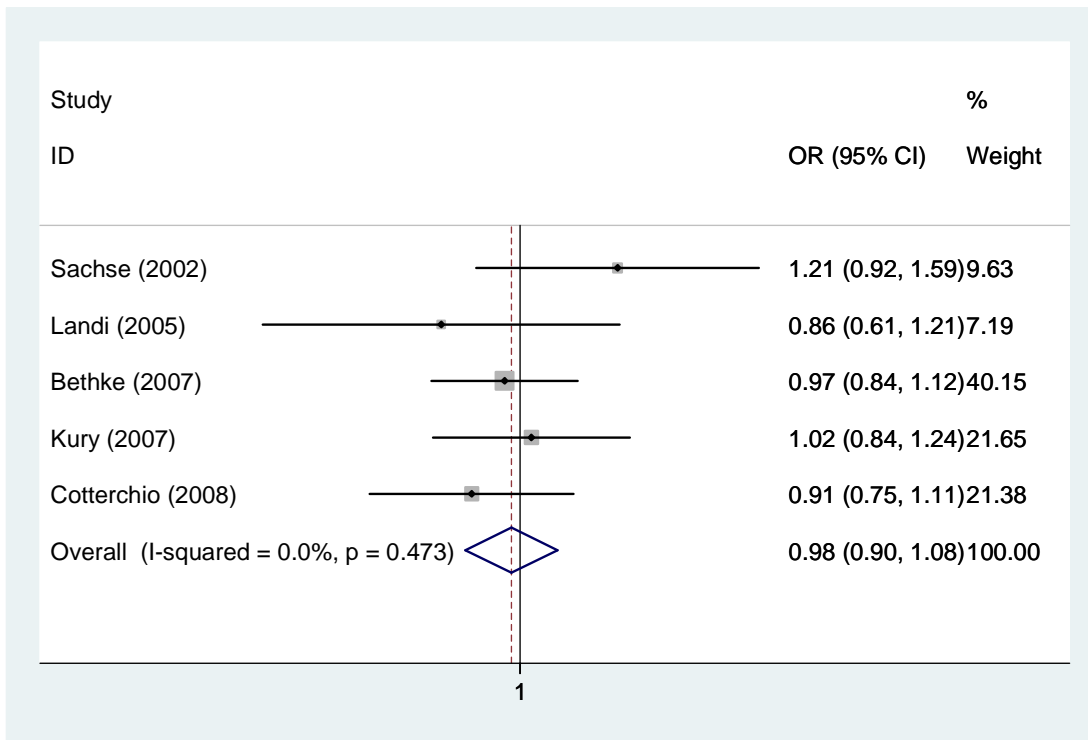
**CYP1A2 163C>A Additive model: var/var vs. wt/wt (fixed model)**



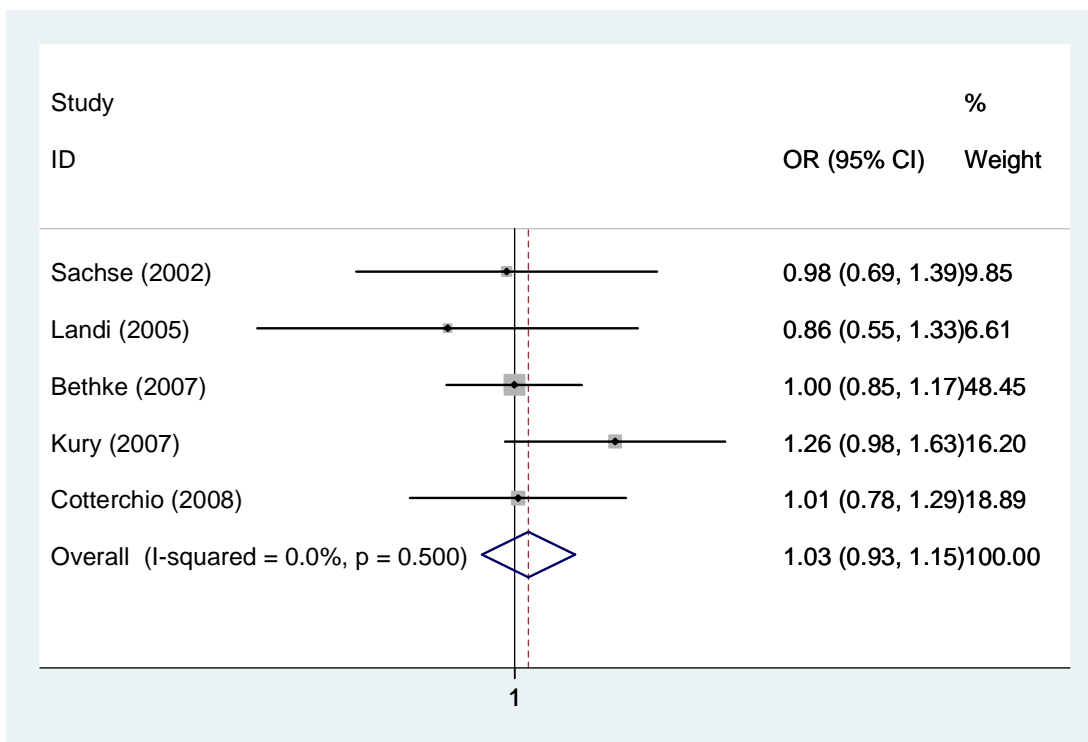
**CYP1A2 163C>A Recessive model: var/var vs. wt/wt & wt/var (fixed model)**



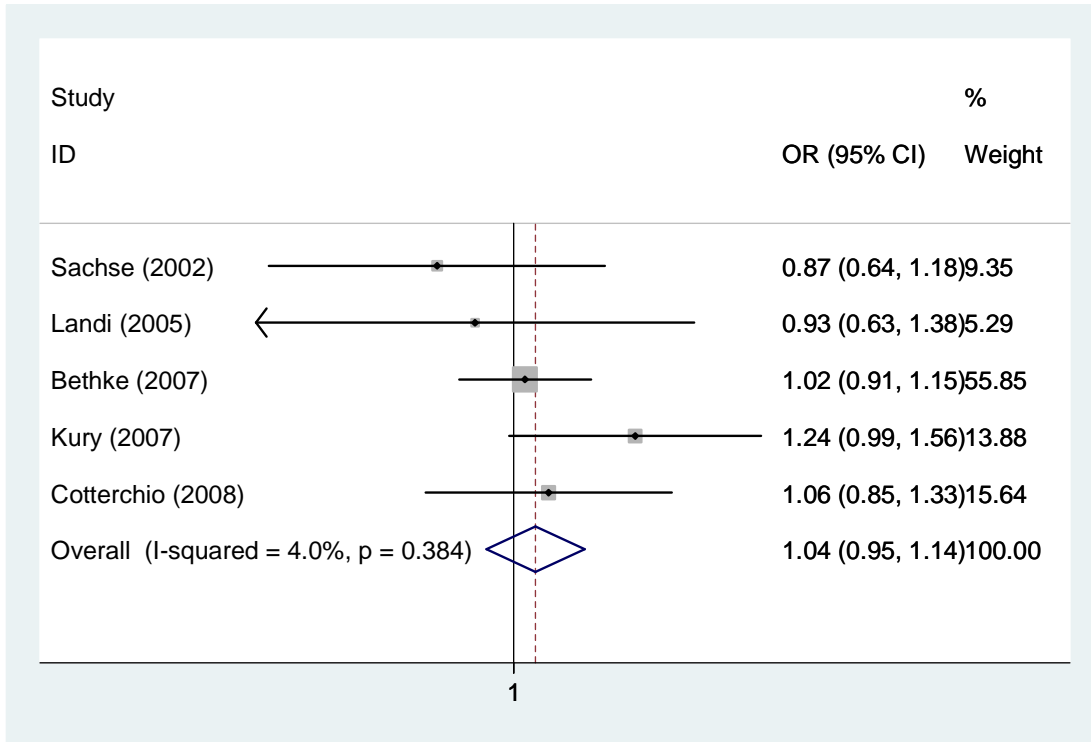
**CYP1A2 163C>A Dominant model: wt/var & var/var vs. wt/wt & wt/var (random model)**



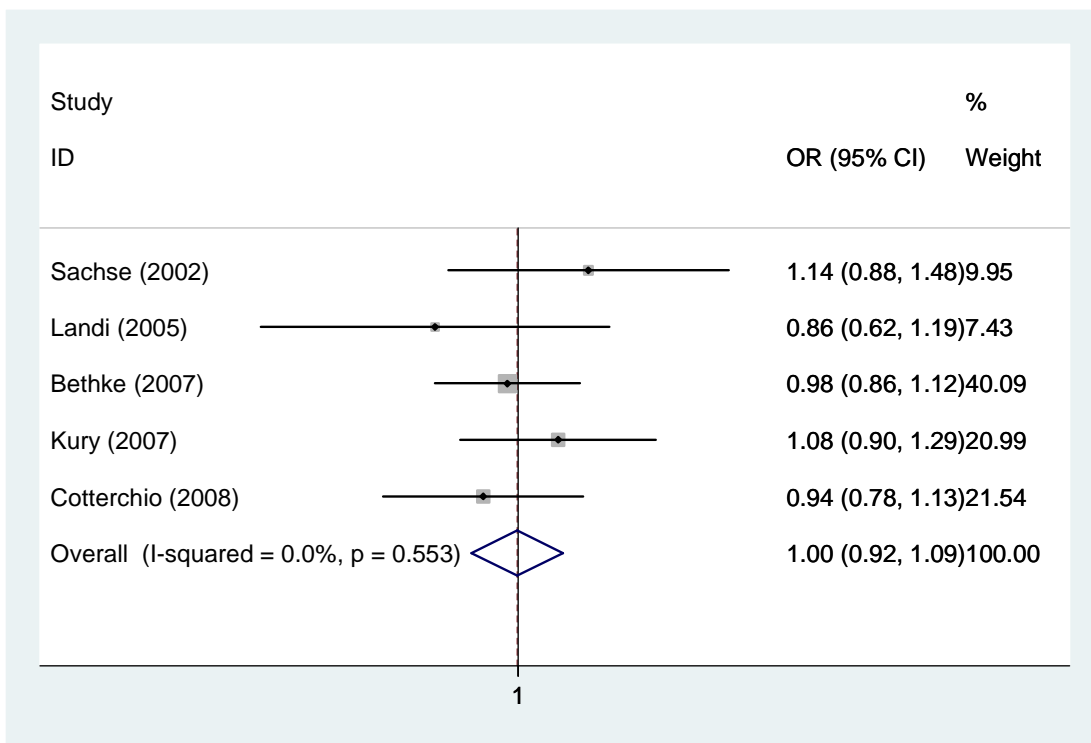
**CYP1B1 4326C>G Additive model: wt/var vs. wt/wt (fixed model)**



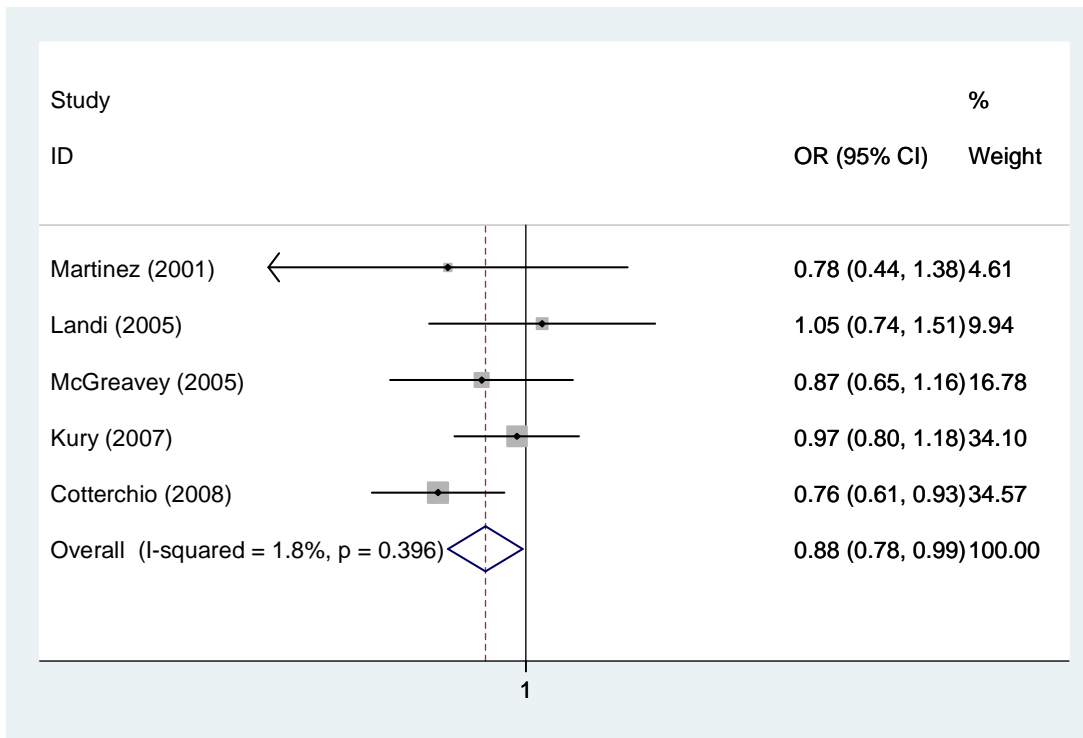
**CYP1B1 4326C>G Additive model: var/var vs. wt/wt (fixed model)**



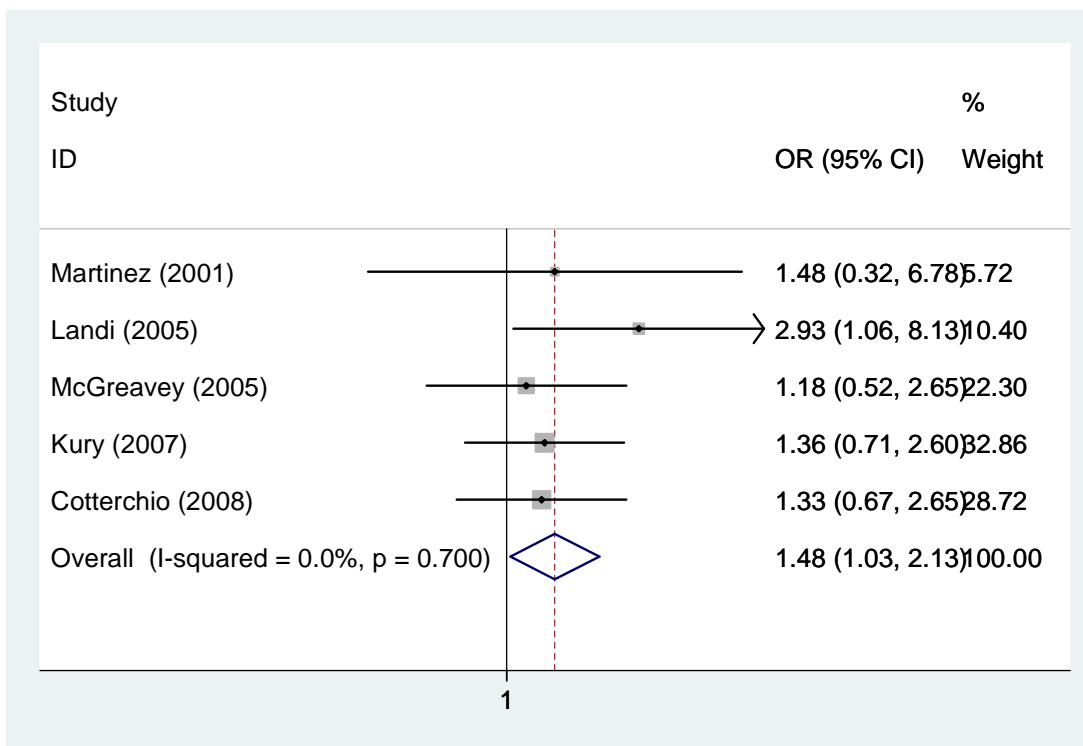
**CYP1B1 4326C>G Recessive model: var/var vs. wt/wt & wt/var (fixed model)**



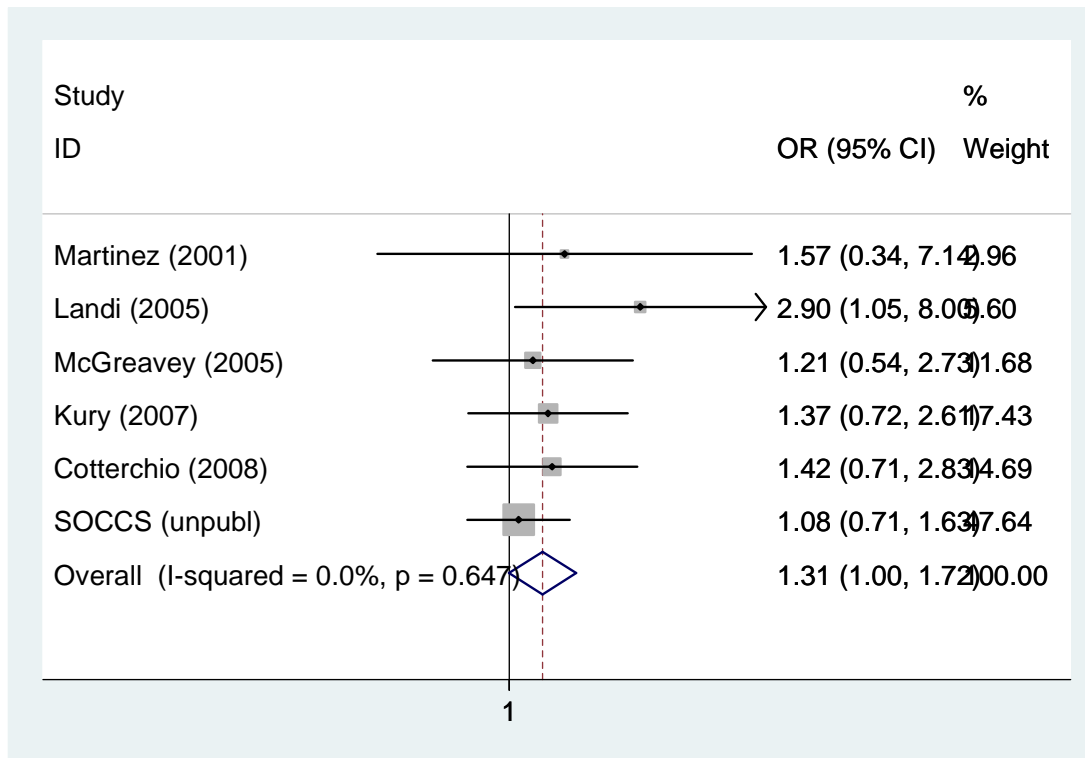
**CYP1B1 4326C>G Dominant model: wt/var & var/var vs. wt/wt & wt/var (fixed model)**



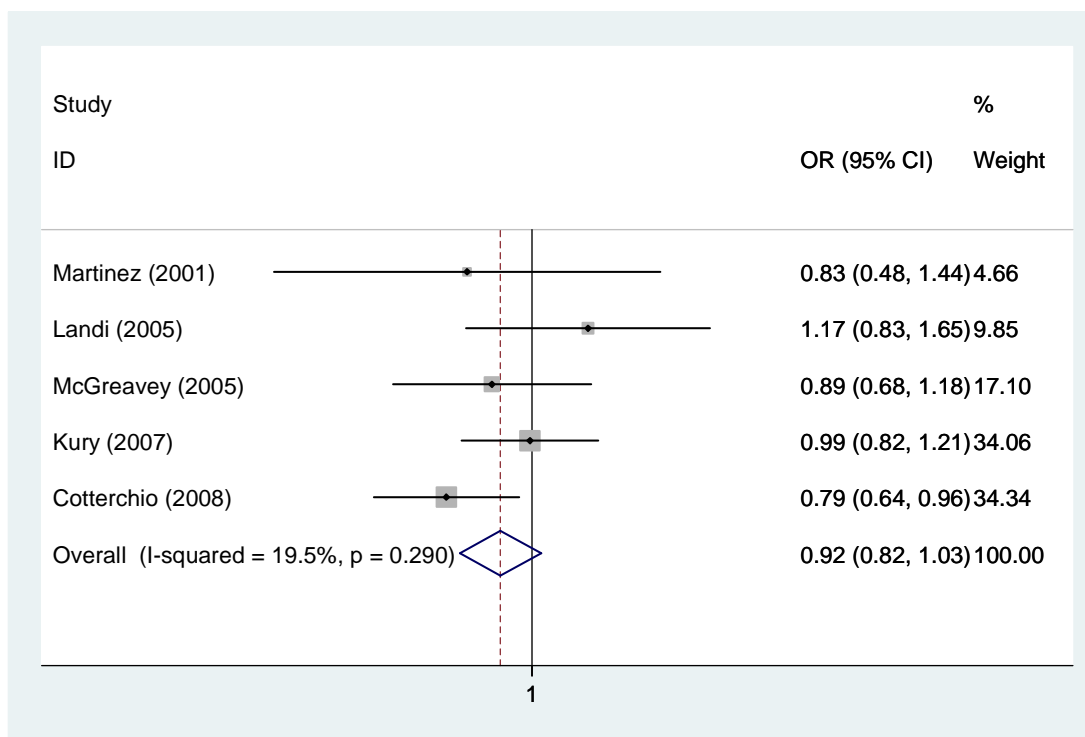
**CYP2C9 430C>T Additive model: wt/var vs. wt/wt (fixed model)**



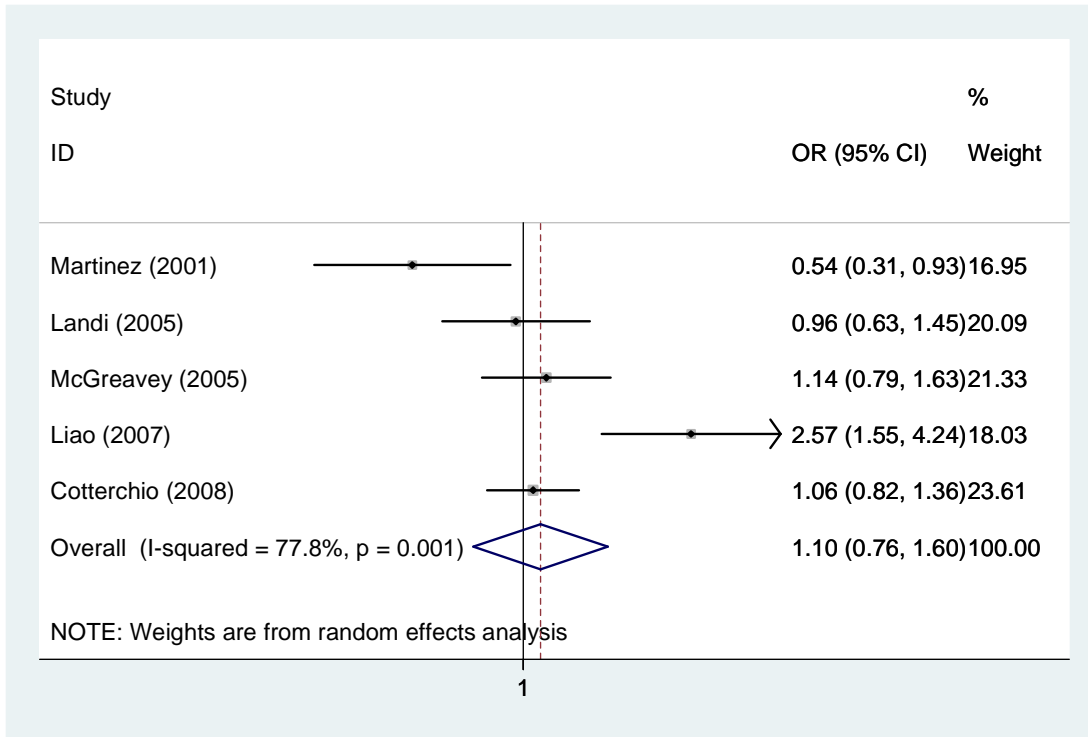
**CYP2C9 430C>T Additive model: var/var vs. wt/wt (fixed model)**



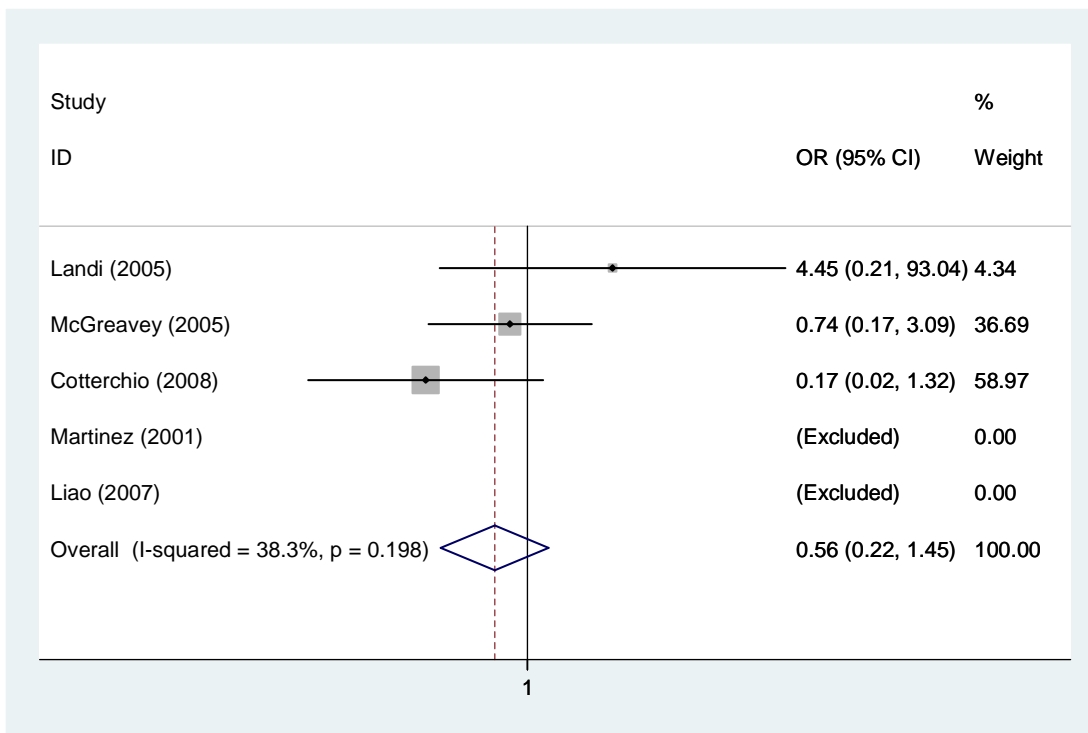
**CYP2C9 430C>T Recessive model: var/var vs. wt/wt & wt/var (fixed model)**



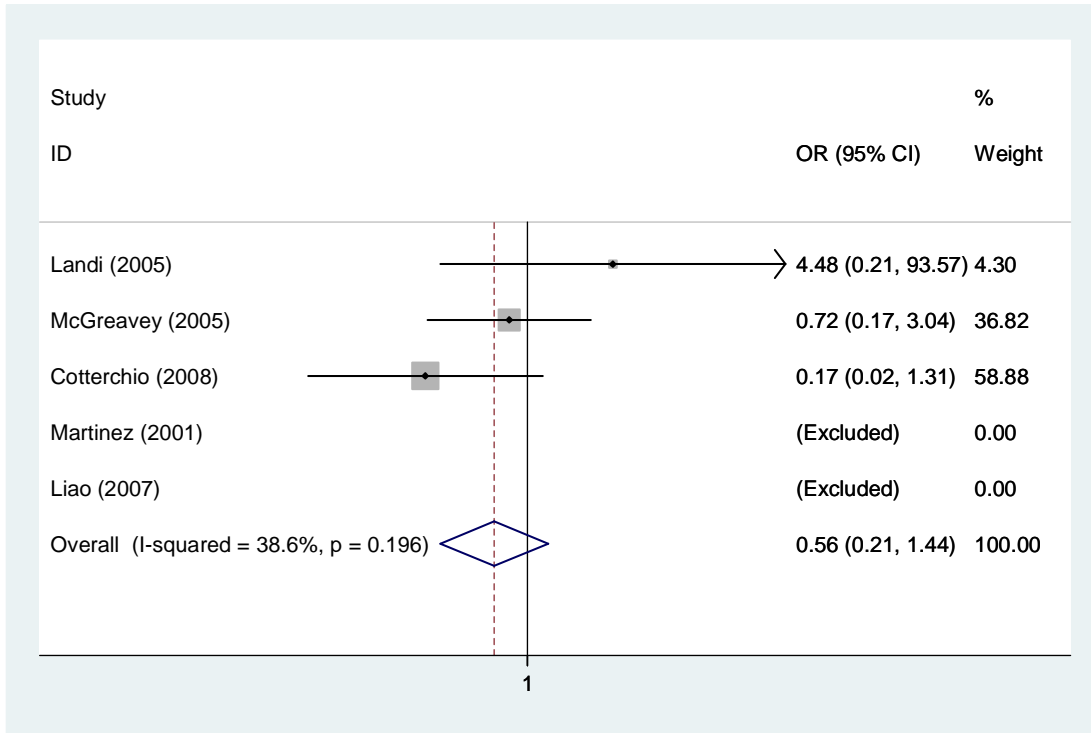
**CYP2C9 430C>T Dominant model: wt/var & var/var vs. wt/wt & wt/var (fixed model)**



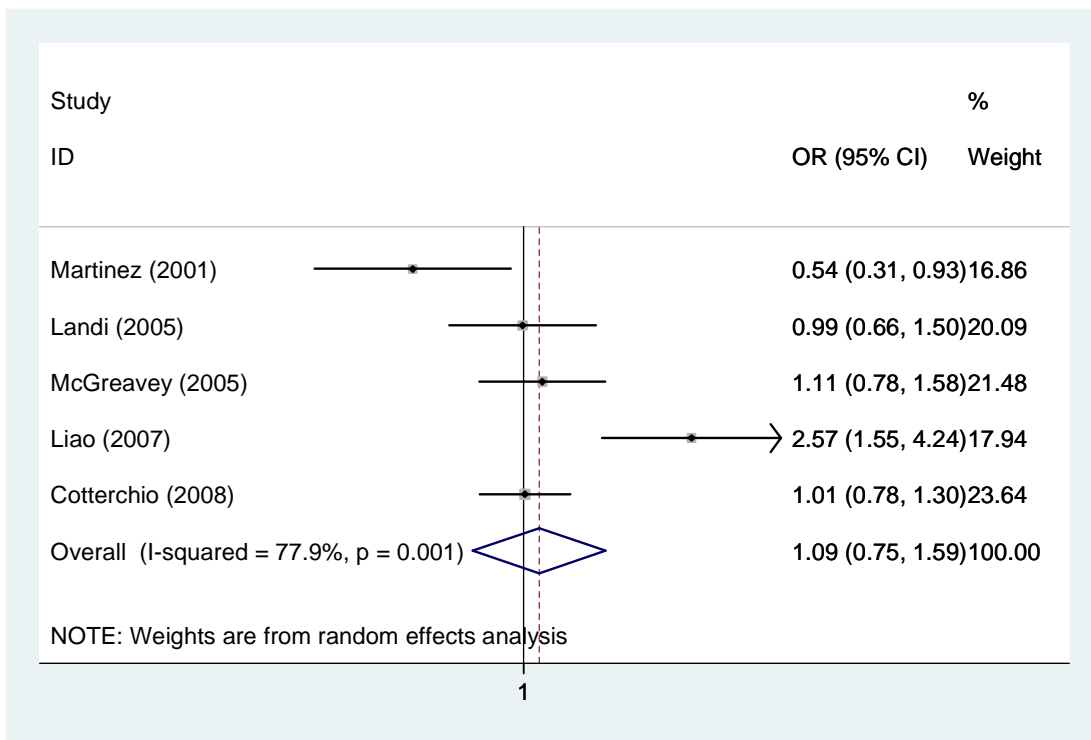
**CYP2C9 1057A>C Additive model: wt/var vs. wt/wt (random model)**



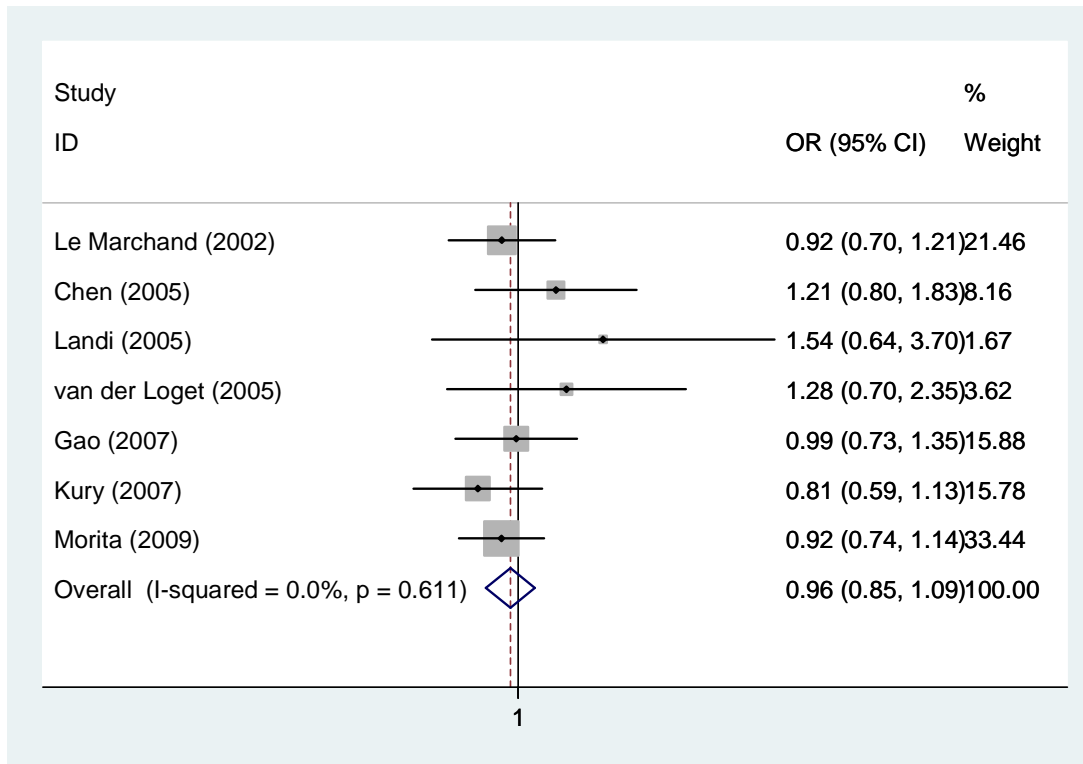
**CYP2C9 1057A>C Additive model: var/var vs. wt/wt (fixed model)**



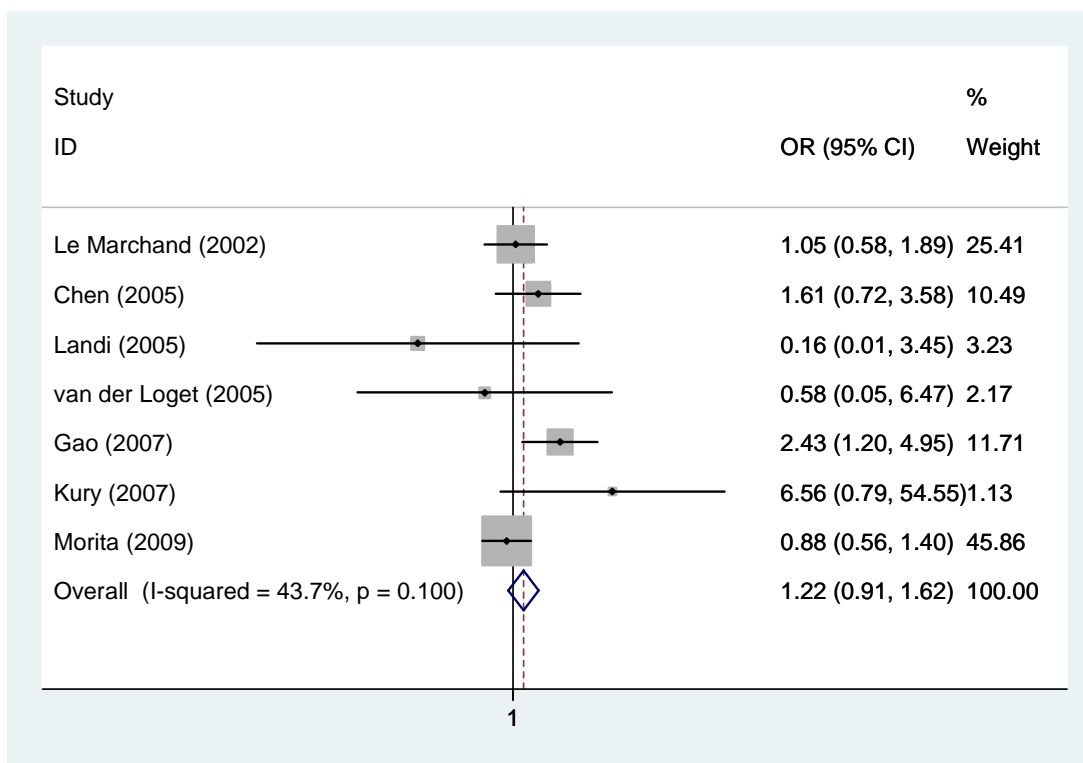
**CYP2C9 1057A>C Recessive model: var/var vs. wt/wt & wt/var (fixed model)**



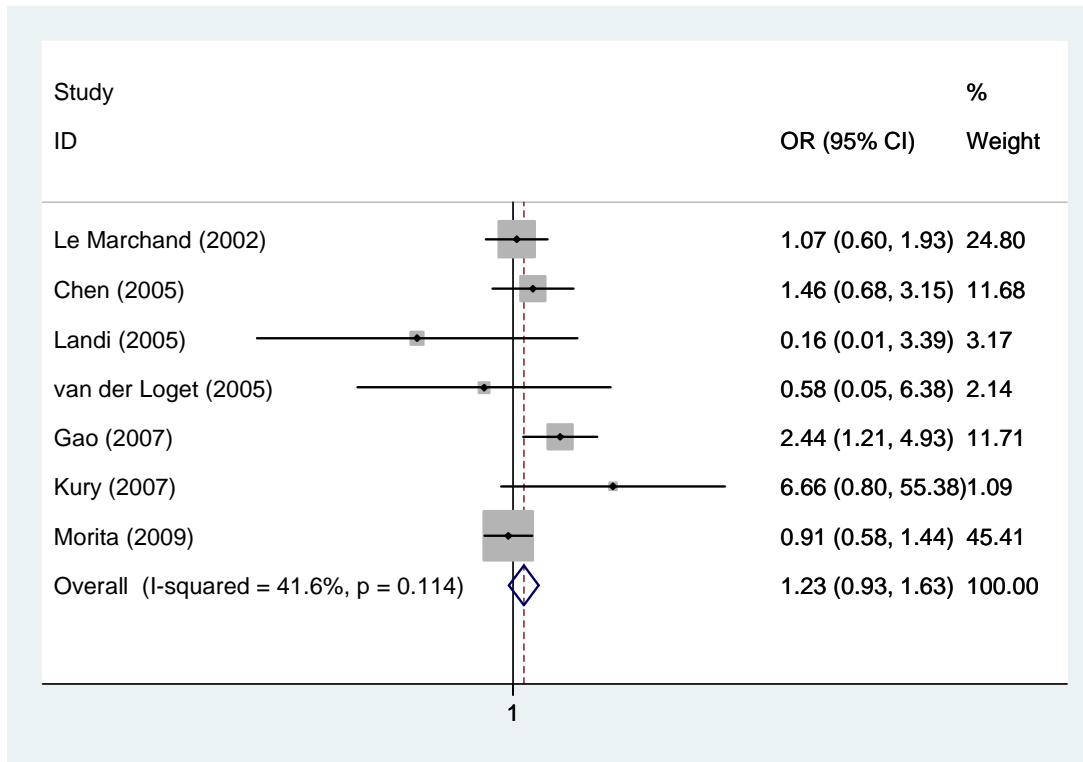
**CYP2C9 1057A>C Dominant model: wt/var & var/var vs. wt/wt & wt/var (random model)**



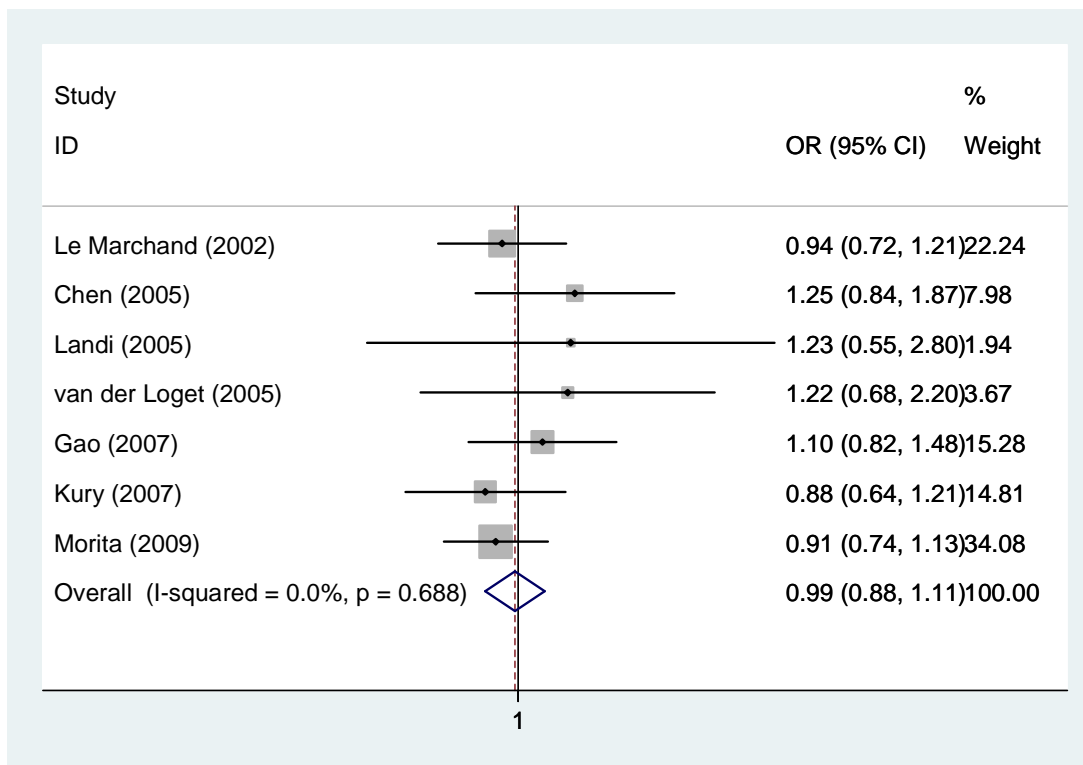
**CYP2E1 1053C>T Additive model: wt/var vs. wt/wt (fixed model)**



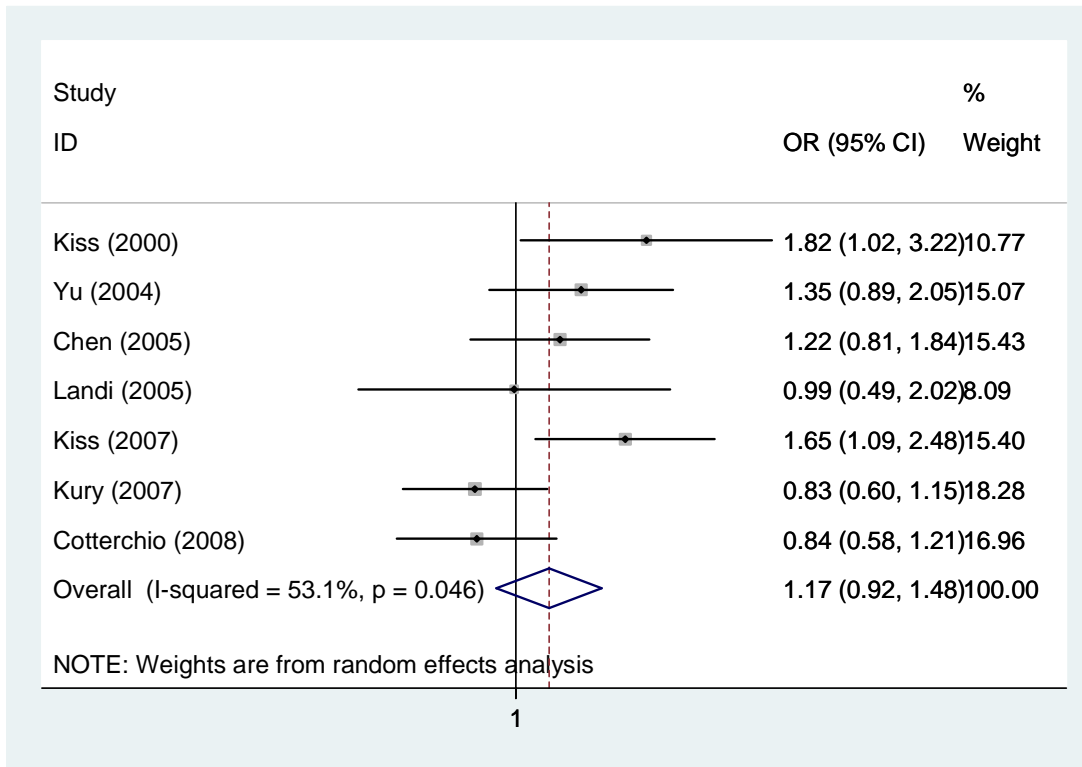
**CYP2E1 1053C>T Additive model: var/var vs. wt/wt (fixed model)**



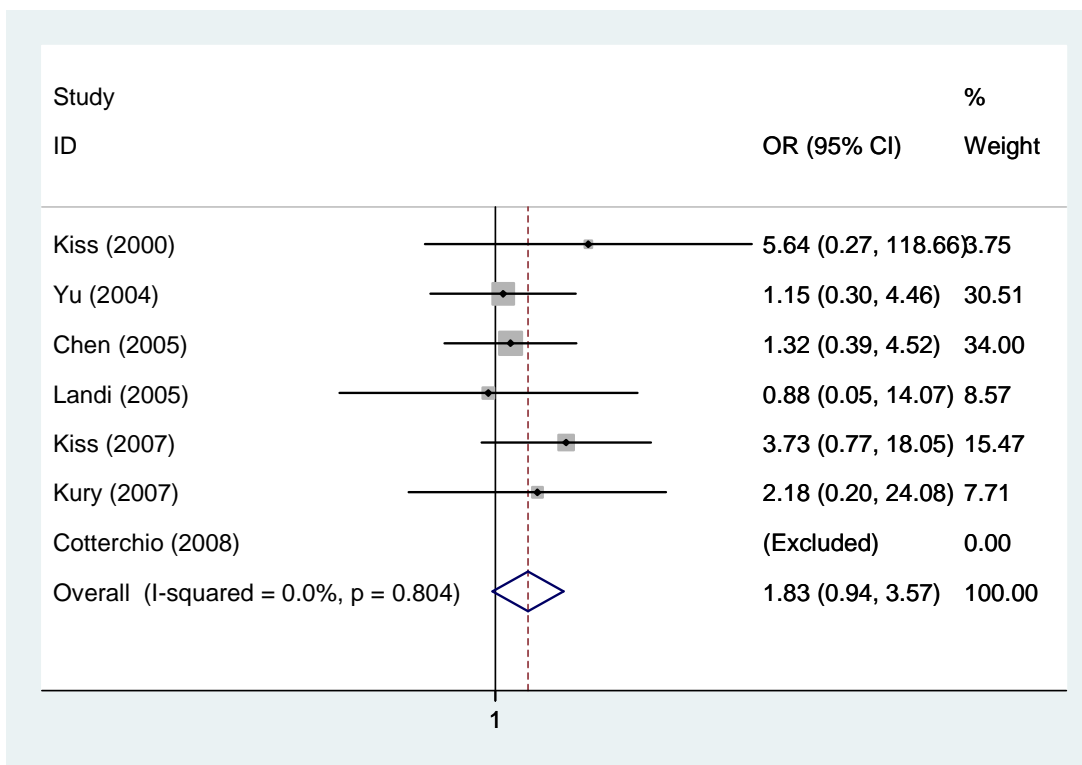
**CYP2E1 1053C>T Recessive model: var/var vs. wt/wt & wt/var (fixed model)**



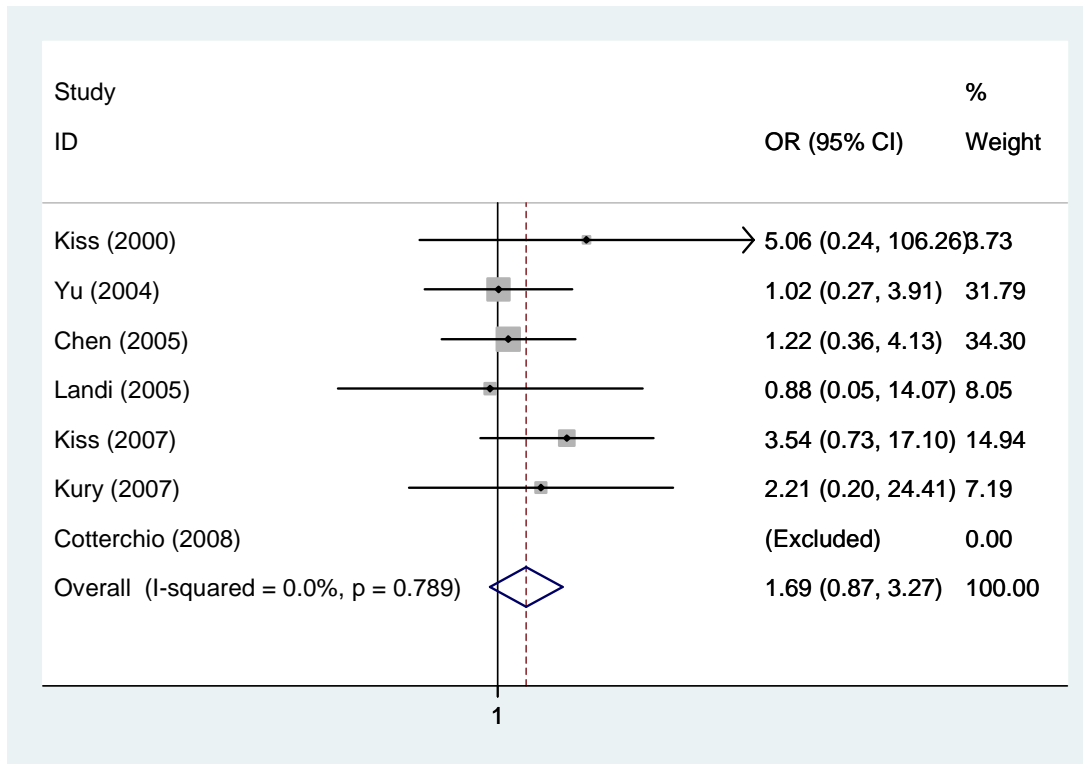
**CYP2E1 1053C>T Dominant model: wt/var & var/var vs. wt/wt & wt/var (fixed model)**



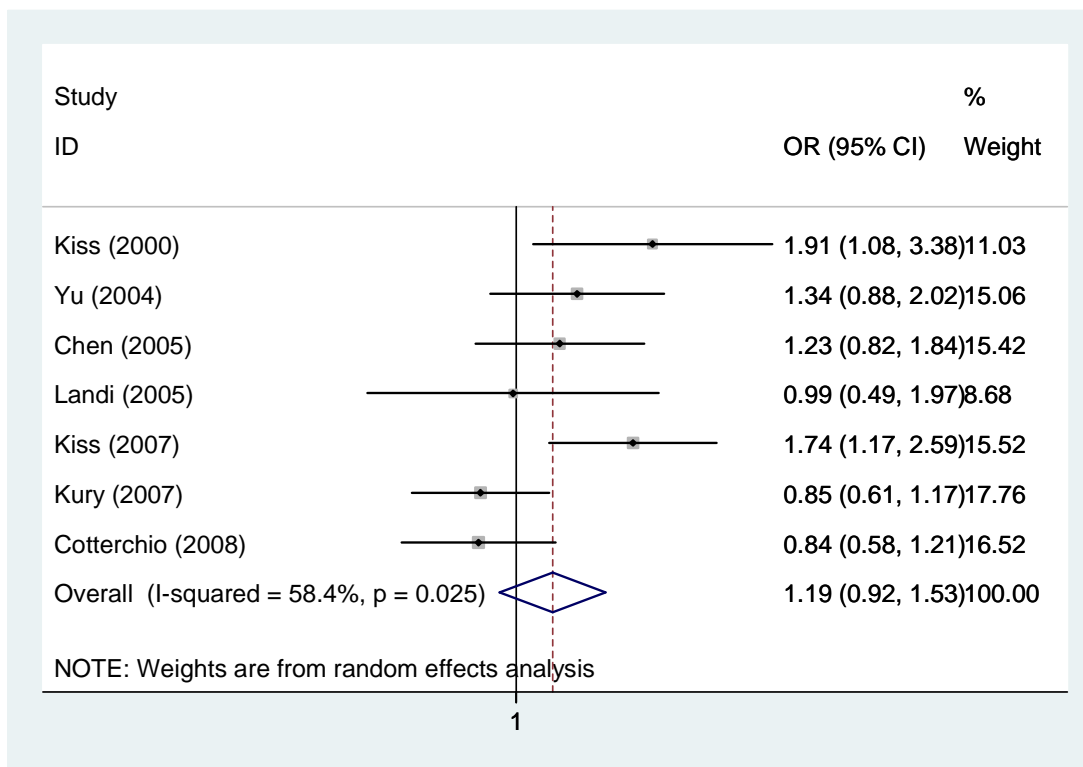
**CYP2E1 1293G>C Additive model: wt/var vs. wt/wt (random model)**



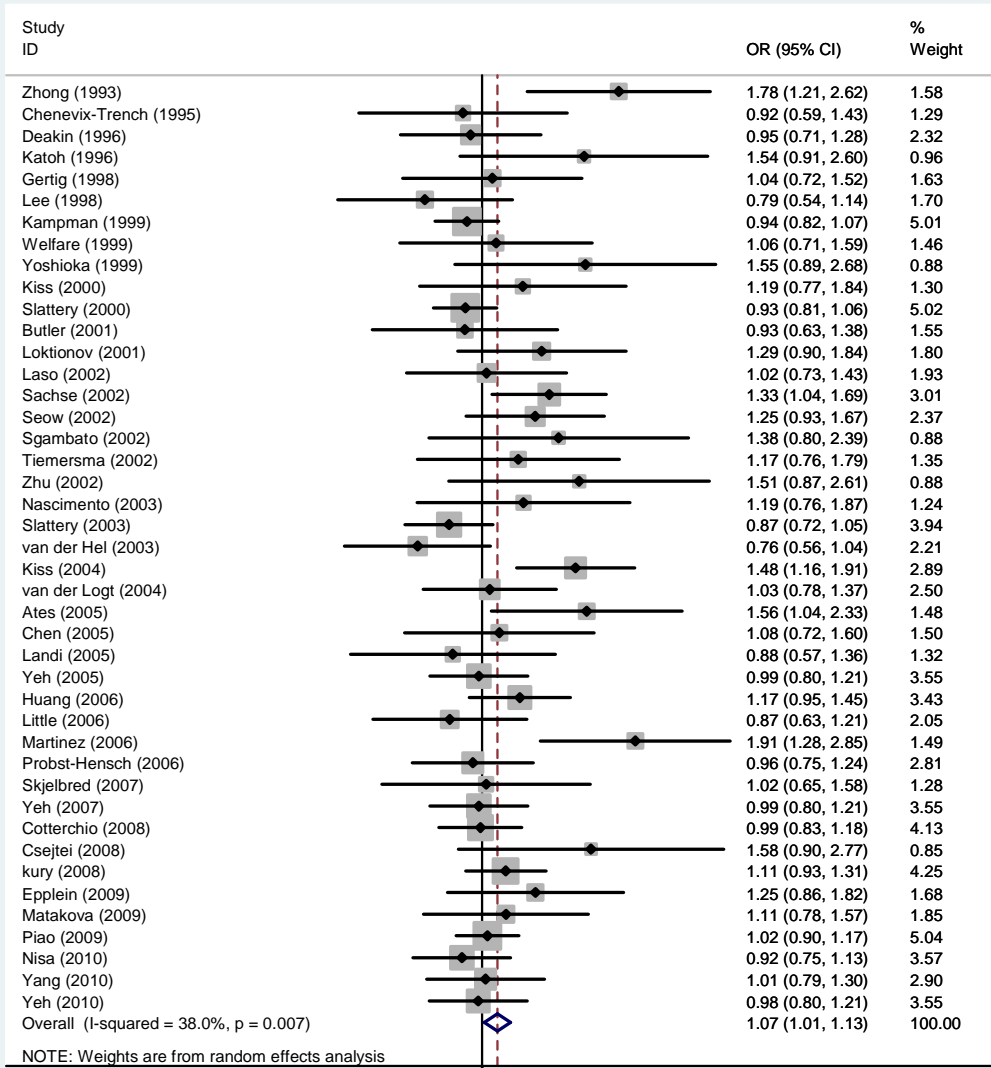
**CYP2E1 1293G>C Additive model: var/var vs. wt/wt (fixed model)**

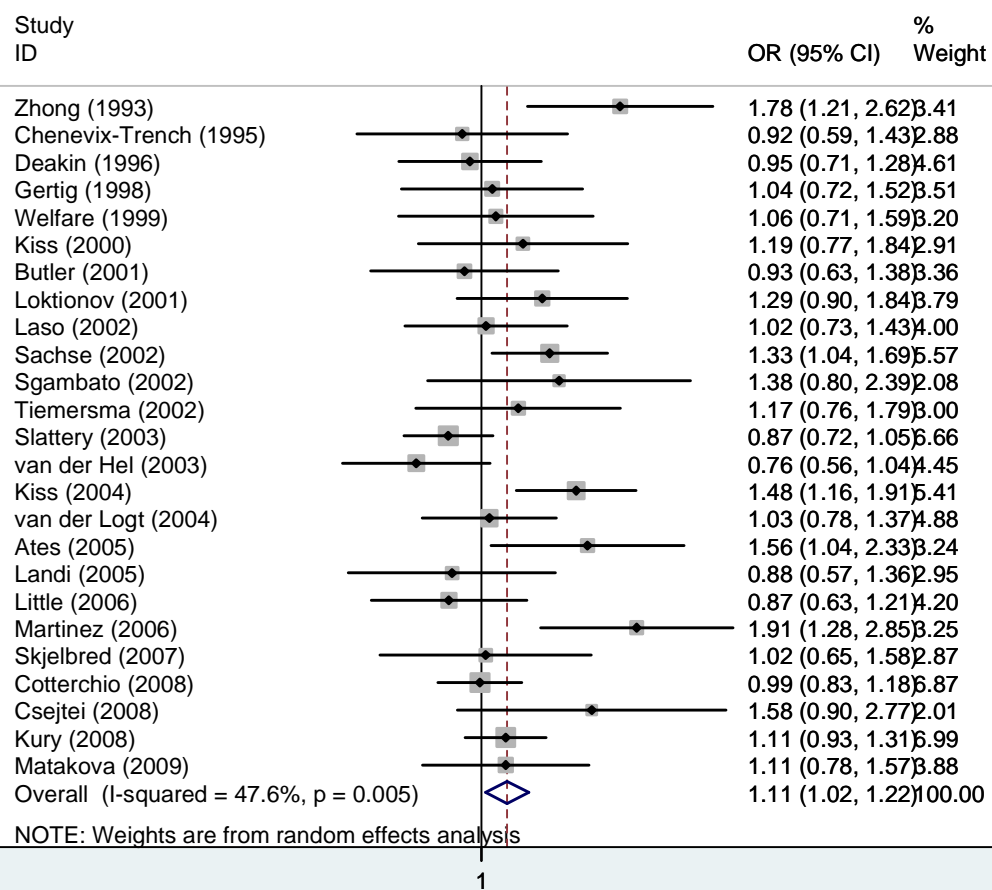


**CYP2E1 1293G>C Recessive model: var/var vs. wt/wt & wt/var (fixed model)**

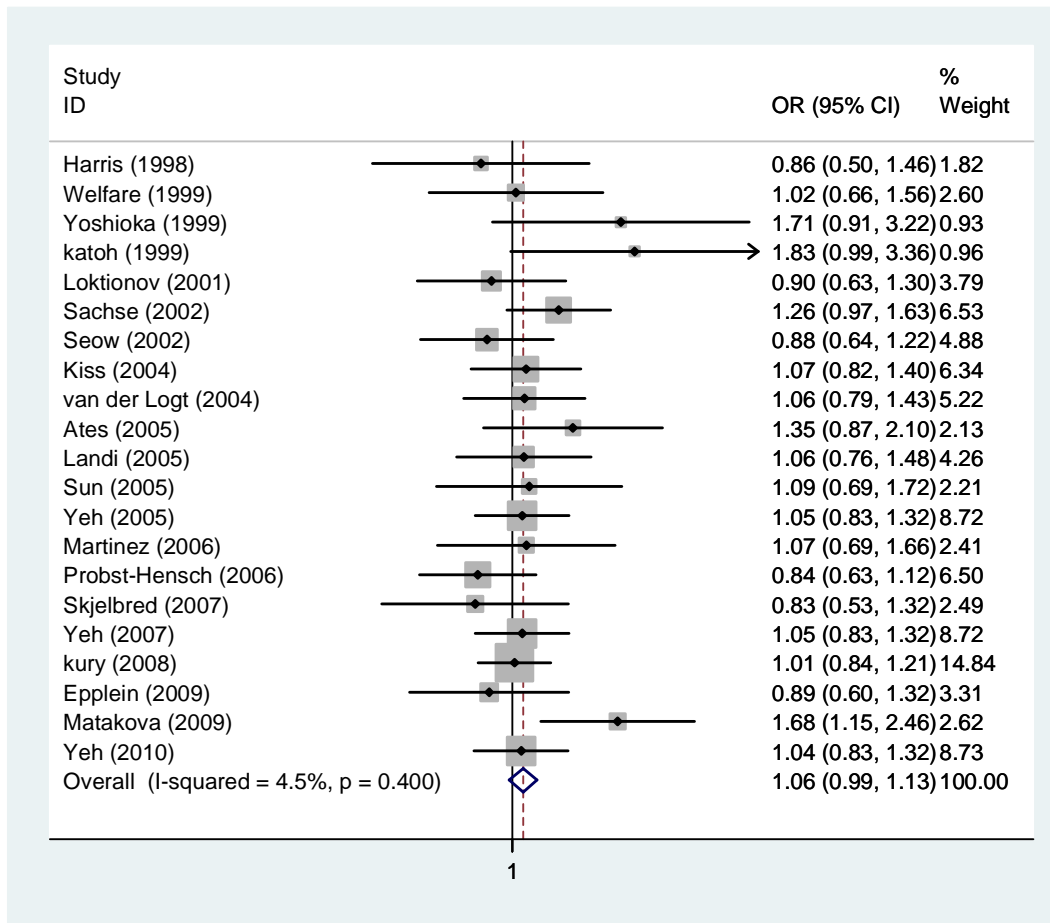


**CYP2E1 1293G>C Dominant model: wt/var & var/var vs. wt/wt & wt/var (random model)**

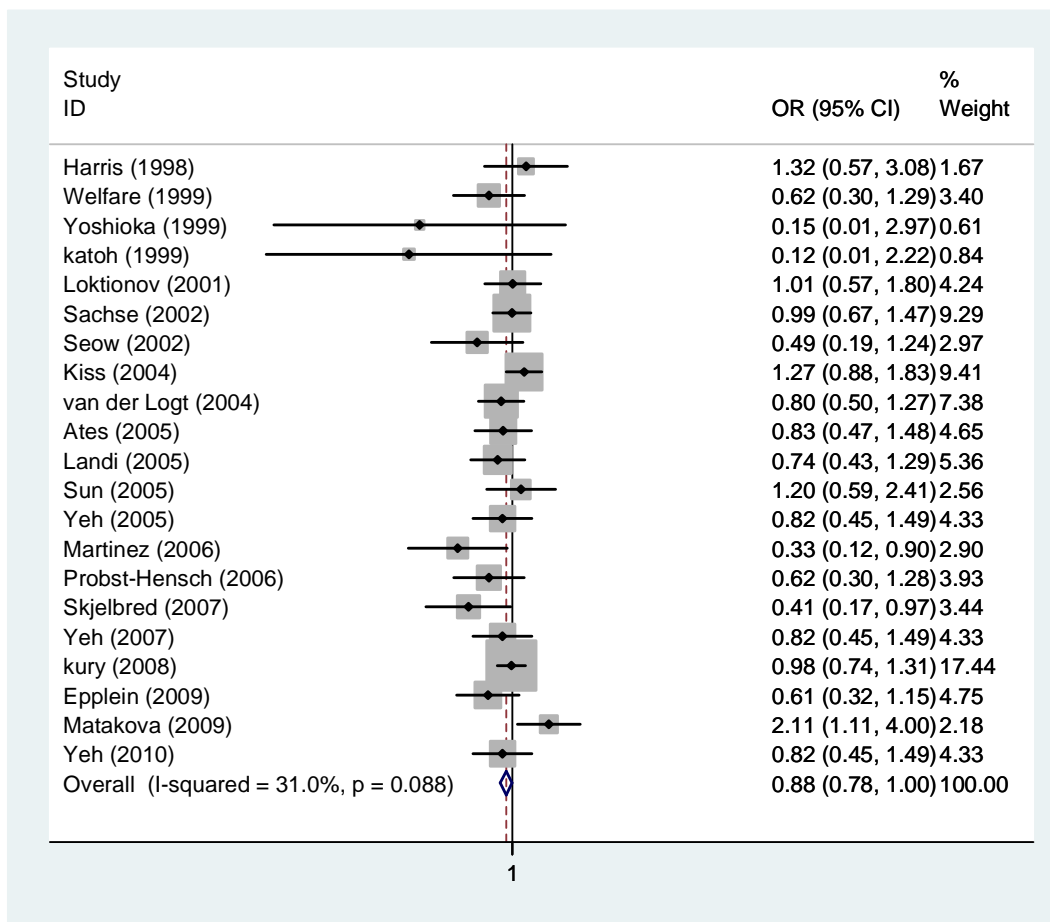




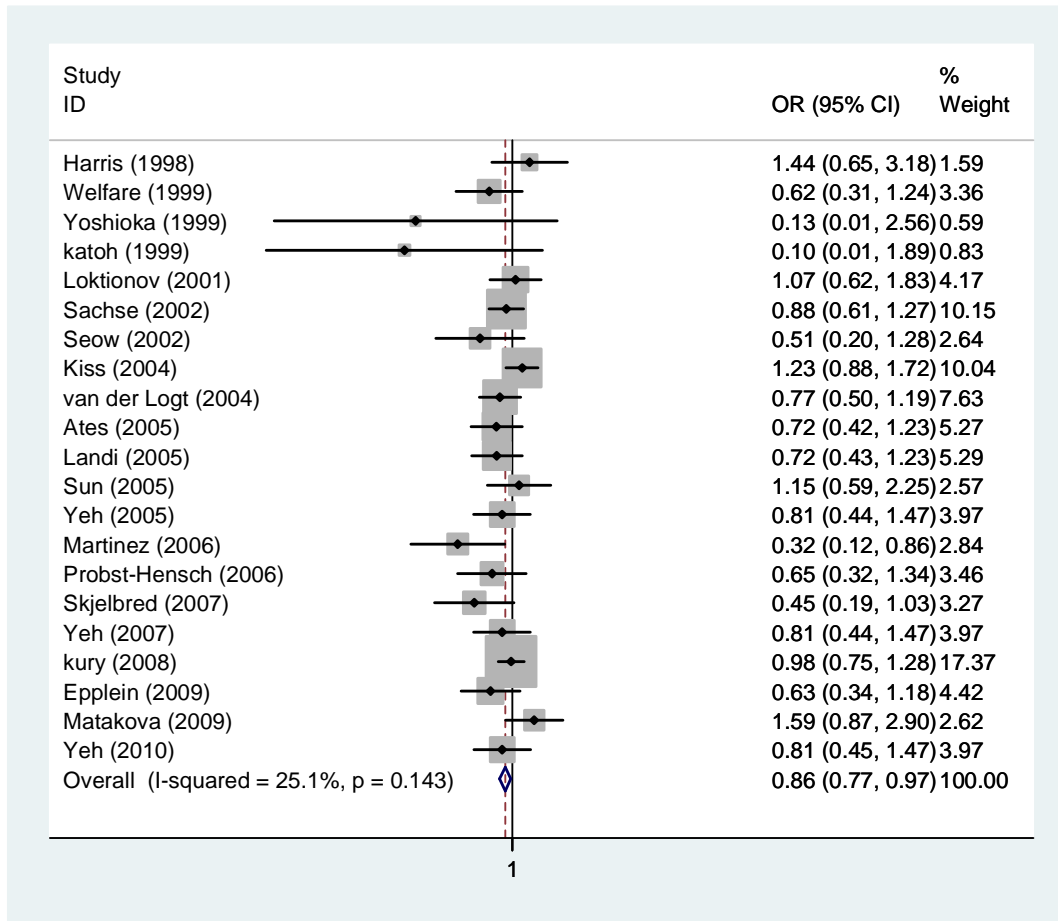
**GSTM1 deletion Dominant model: wt/var & var/var vs. wt/wt & wt/var (random model) [Second graph in white only populations]**



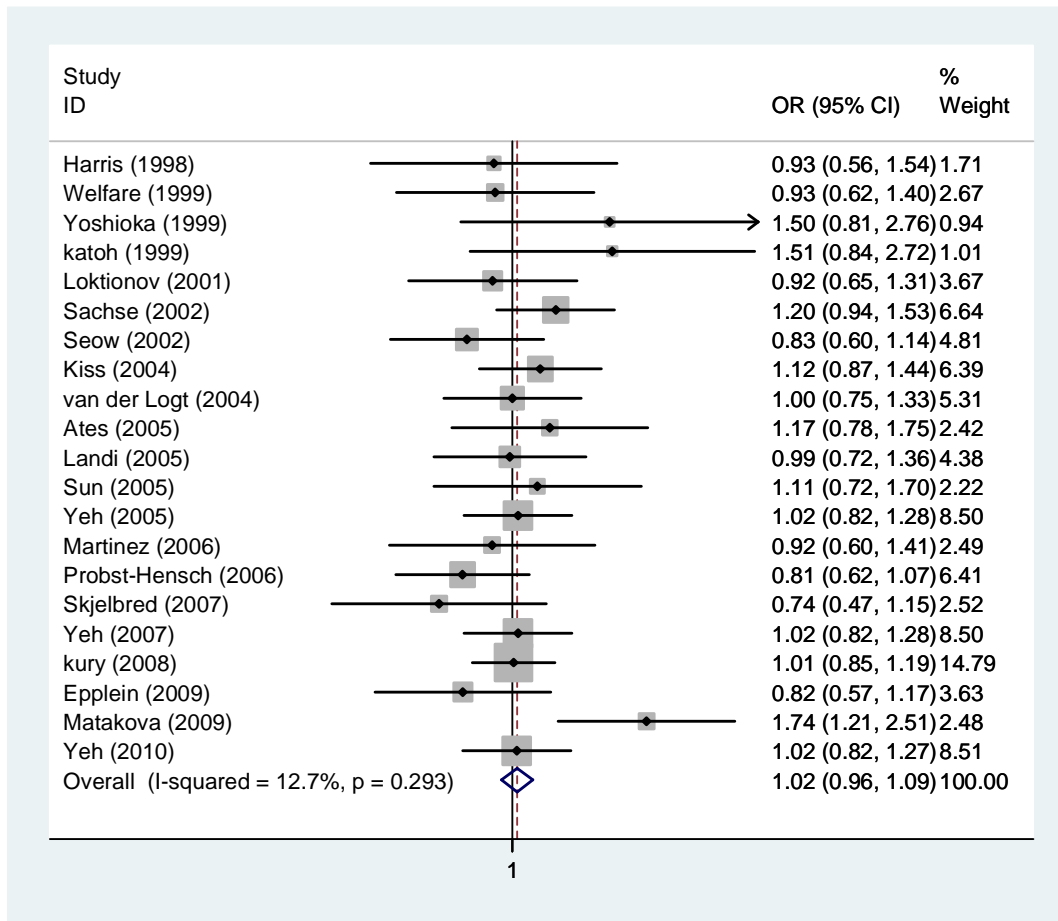
**GSTP1 Ile105Val Additive model: wt/var vs. wt/wt (random model)**



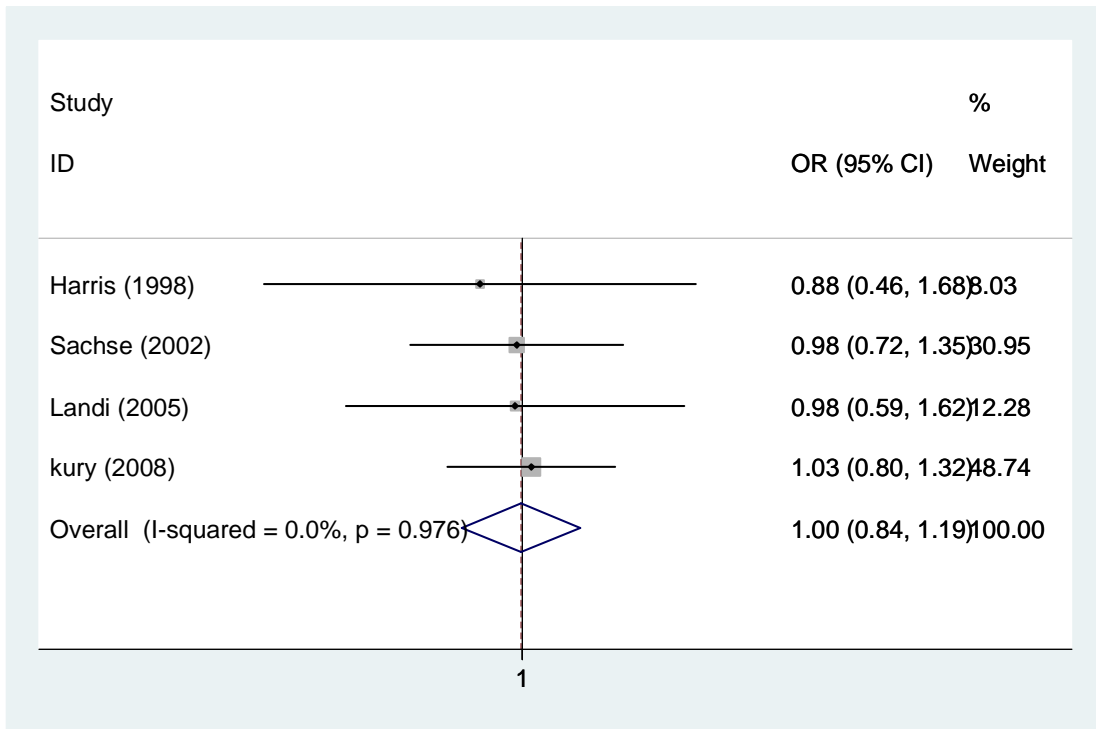
**GSTP1 Ile105Val Additive model: var/var vs. wt/wt (fixed model)**



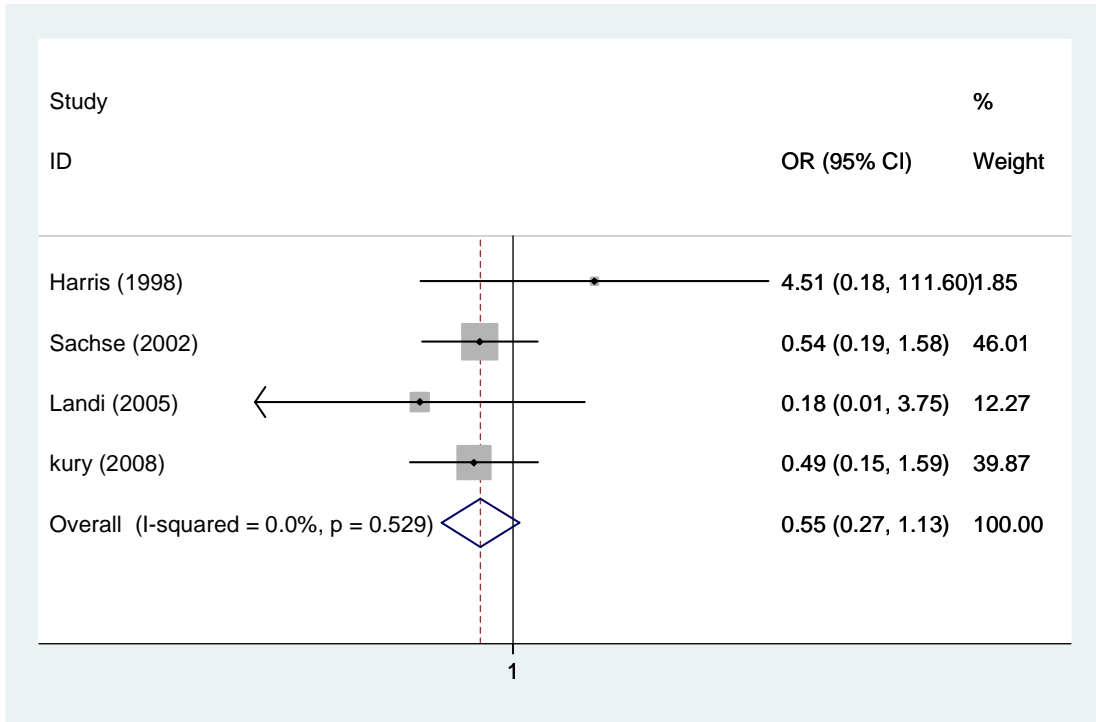
**GSTP1 Ile105Val Recessive model: var/var vs. wt/wt & wt/var (fixed model)**



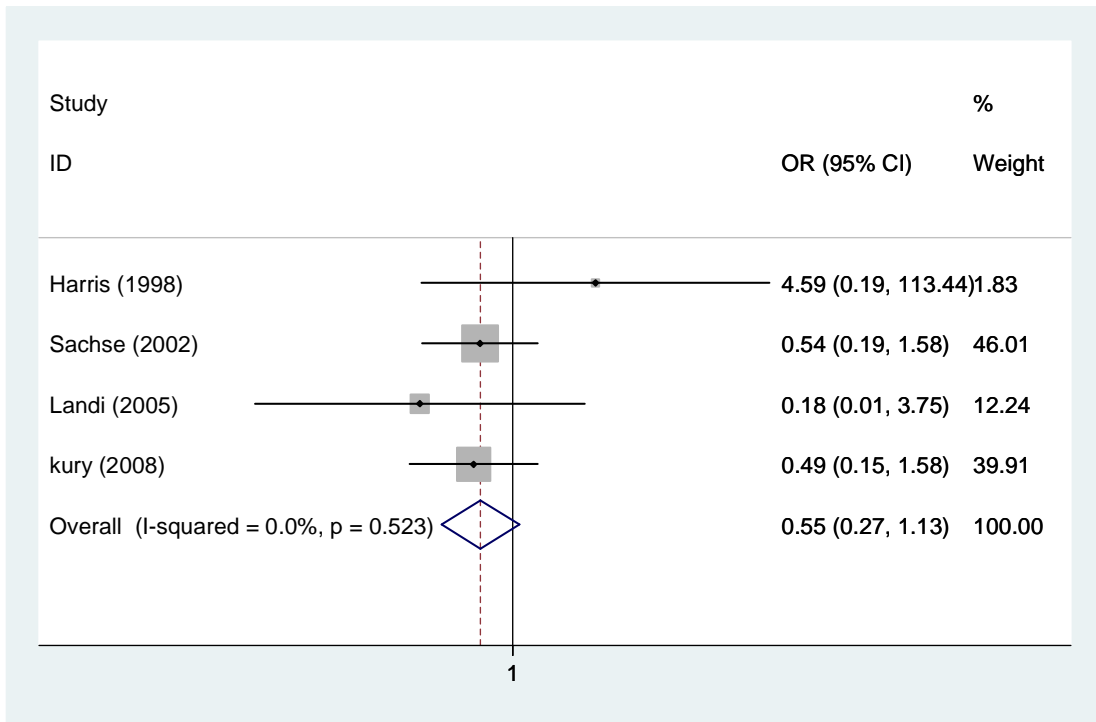
**GSTP1 Ile105Val Dominant model: wt/var & var/var vs. wt/wt & wt/var (fixed model)**



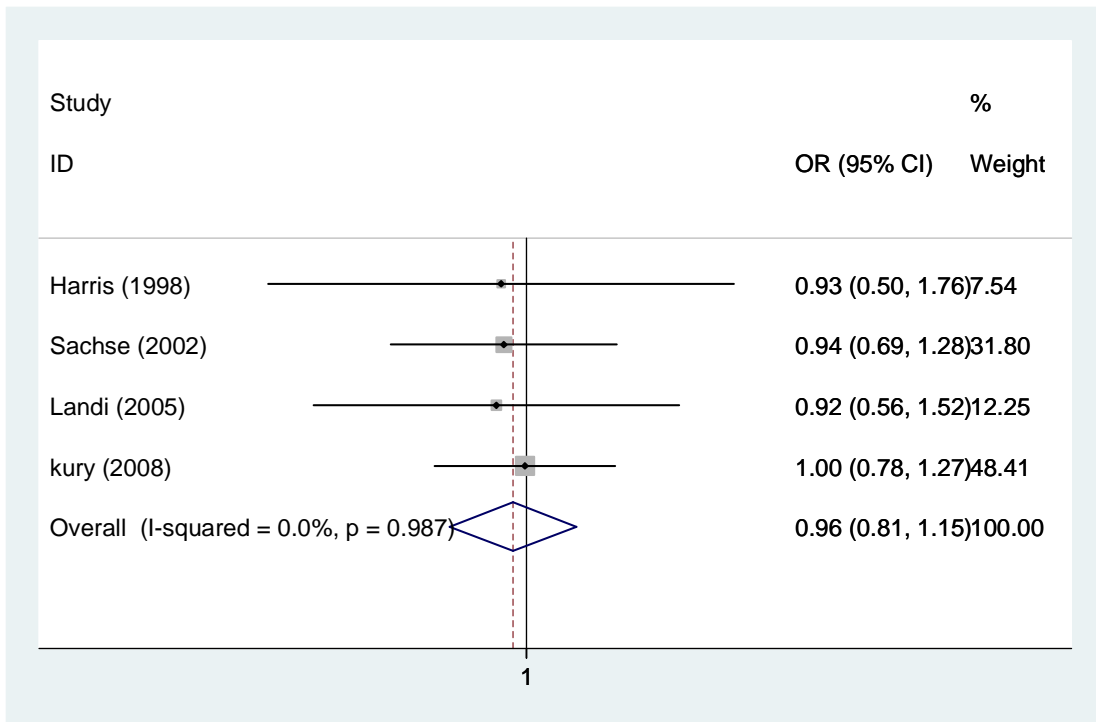
**GSTP1 ALA114VAL Additive model: wt/var vs. wt/wt (fixed model)**



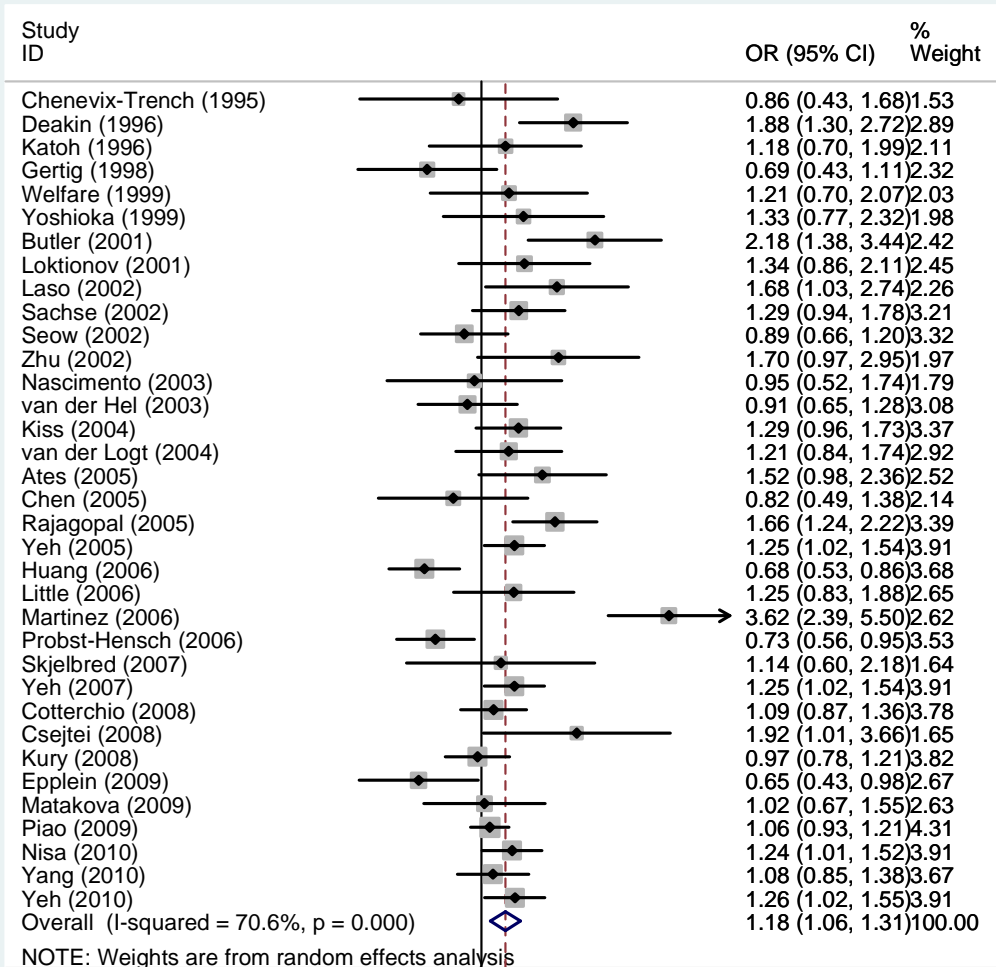
**GSTP1 ALA114VAL Additive model: var/var vs. wt/wt (fixed model)**

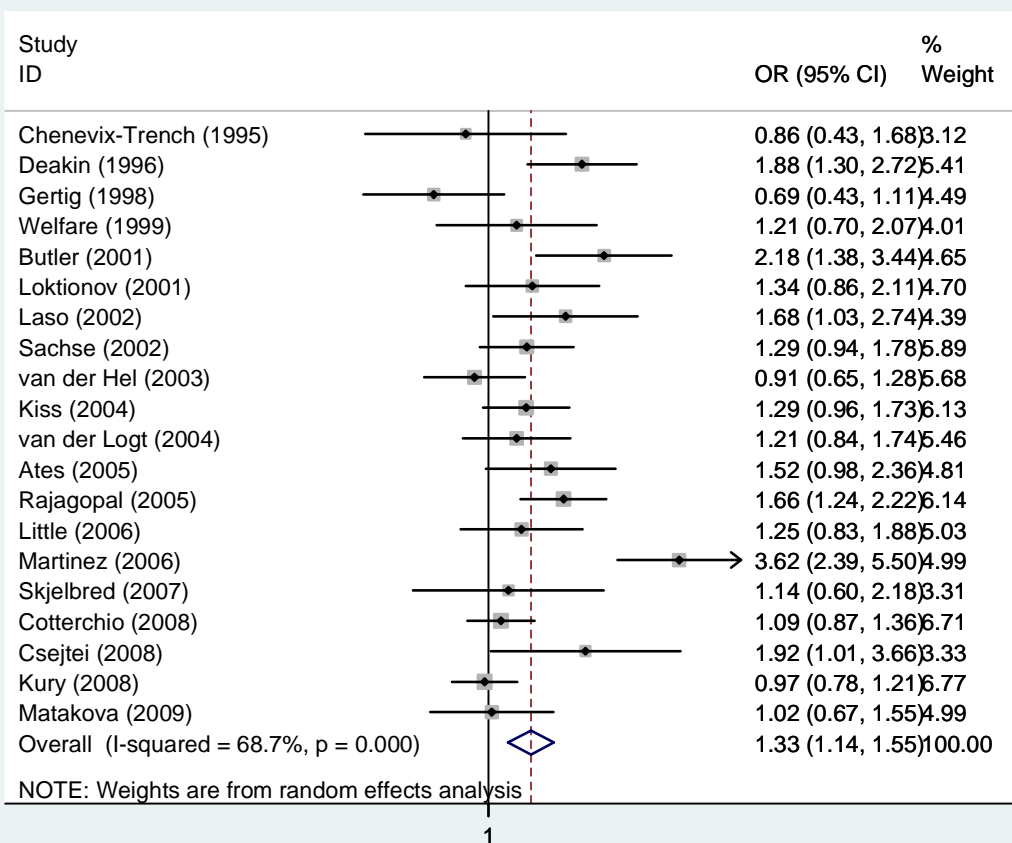


**GSTP1 ALA114VAL Recessive model: var/var vs. wt/wt & wt/var (fixed model)**

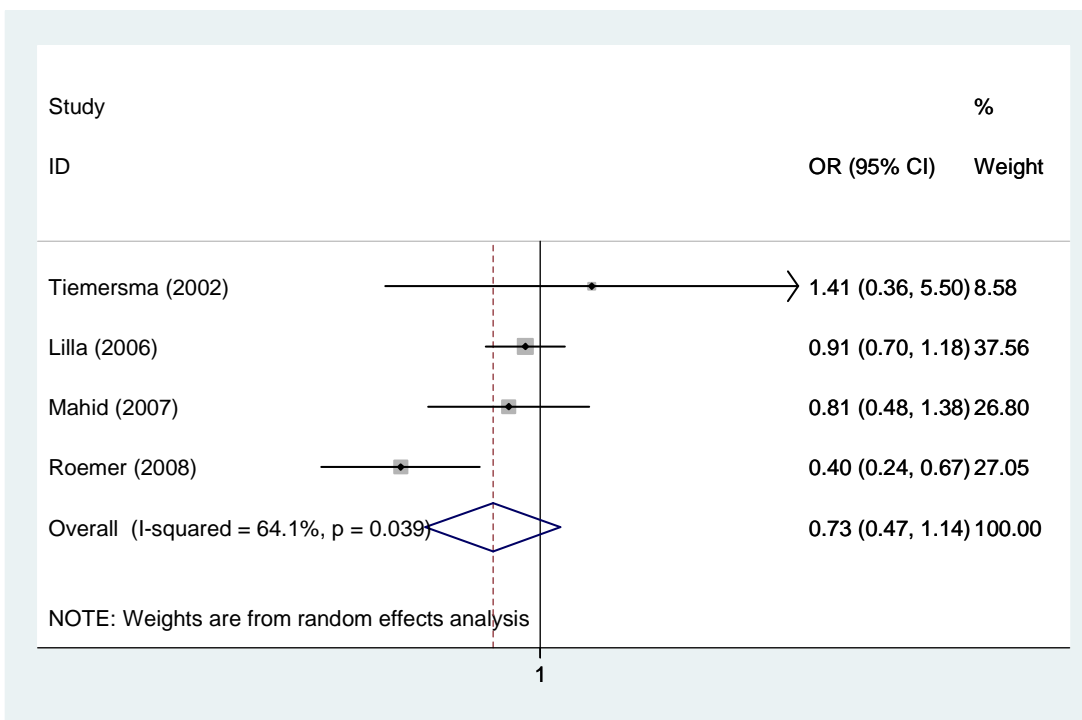
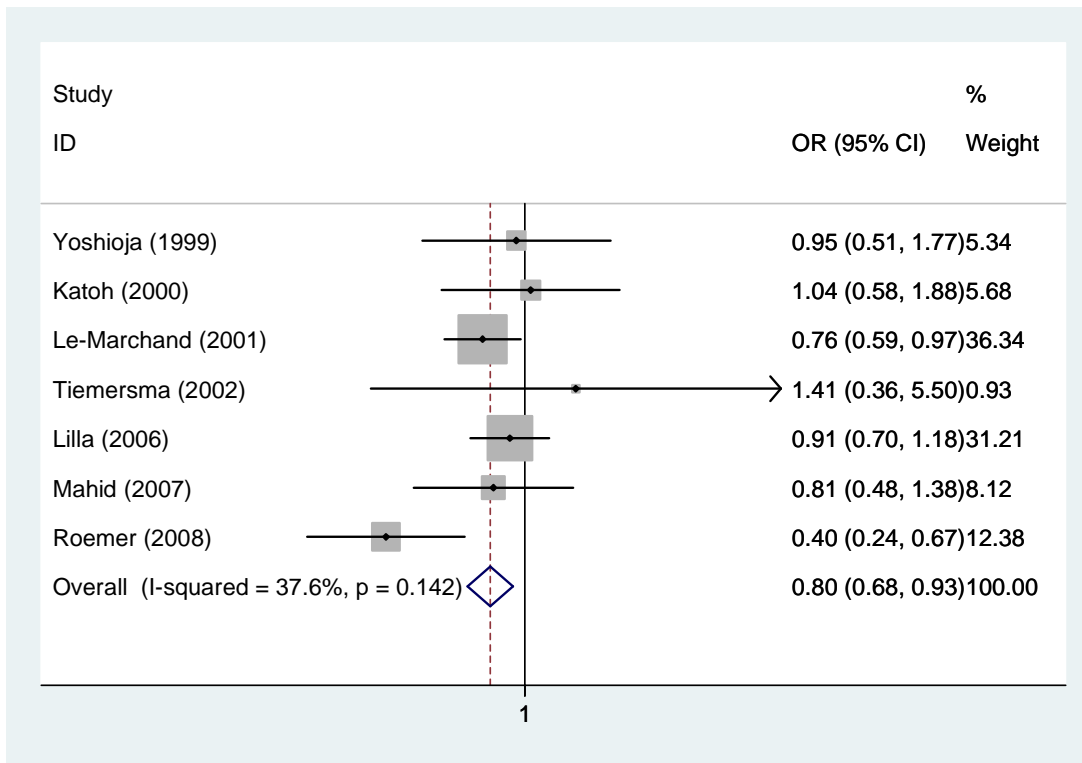


**GSTP1 ALA114VAL Dominant model: wt/var & var/var vs. wt/wt & wt/var (fixed model)**

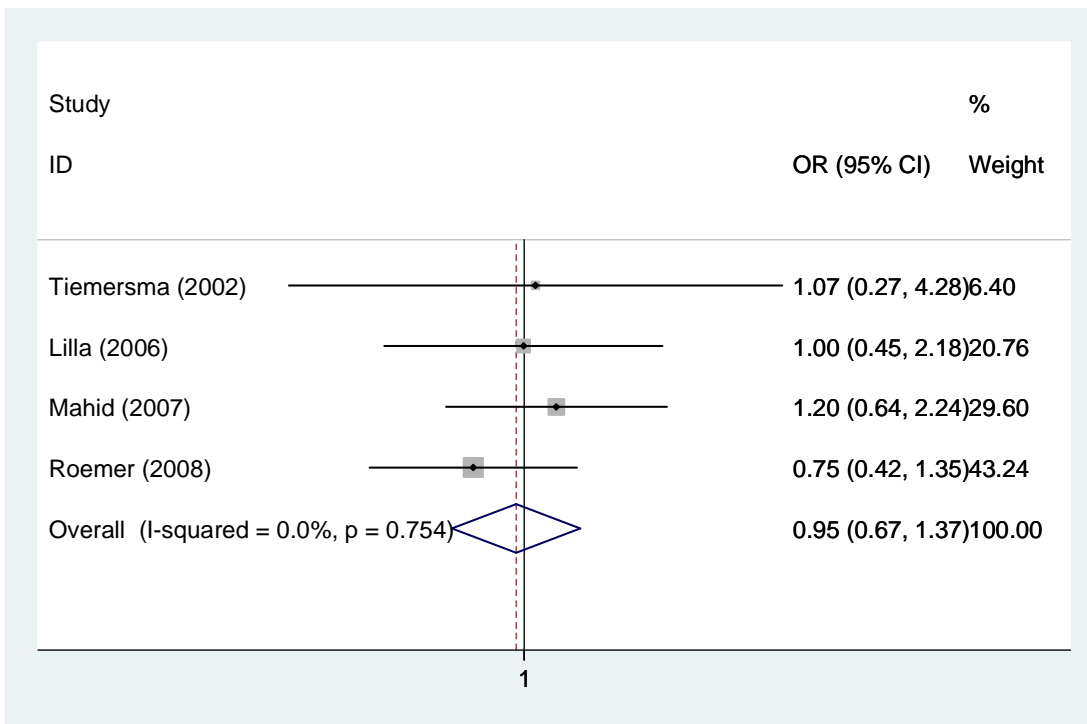
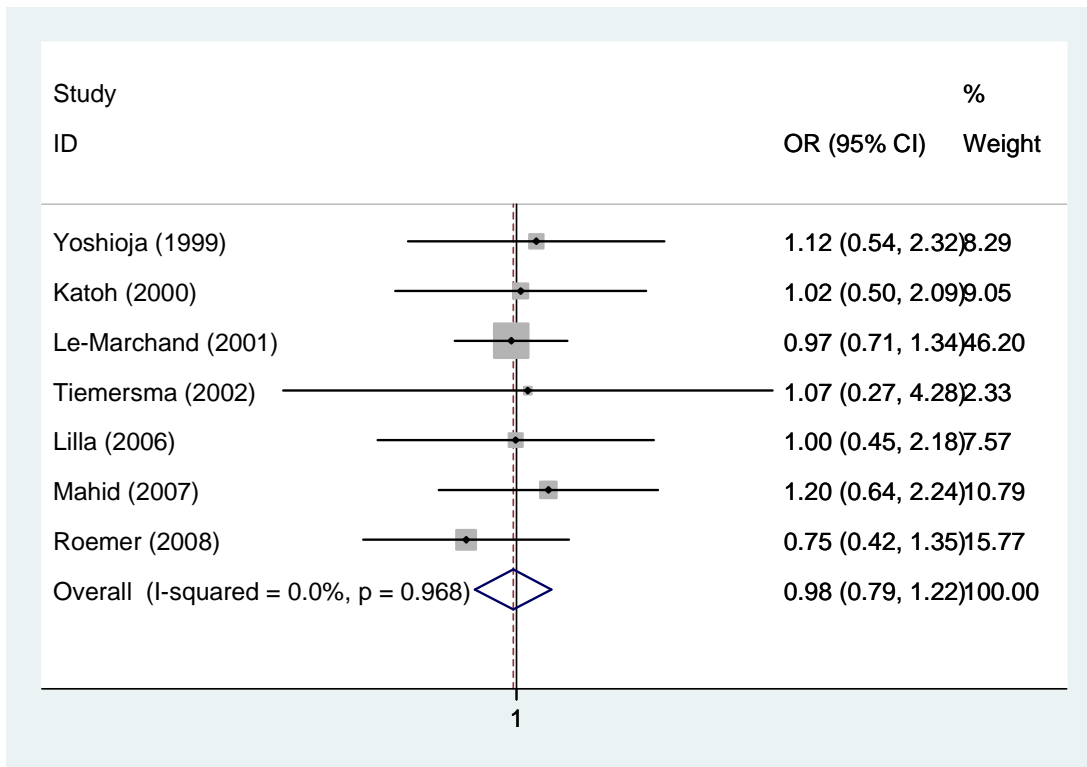




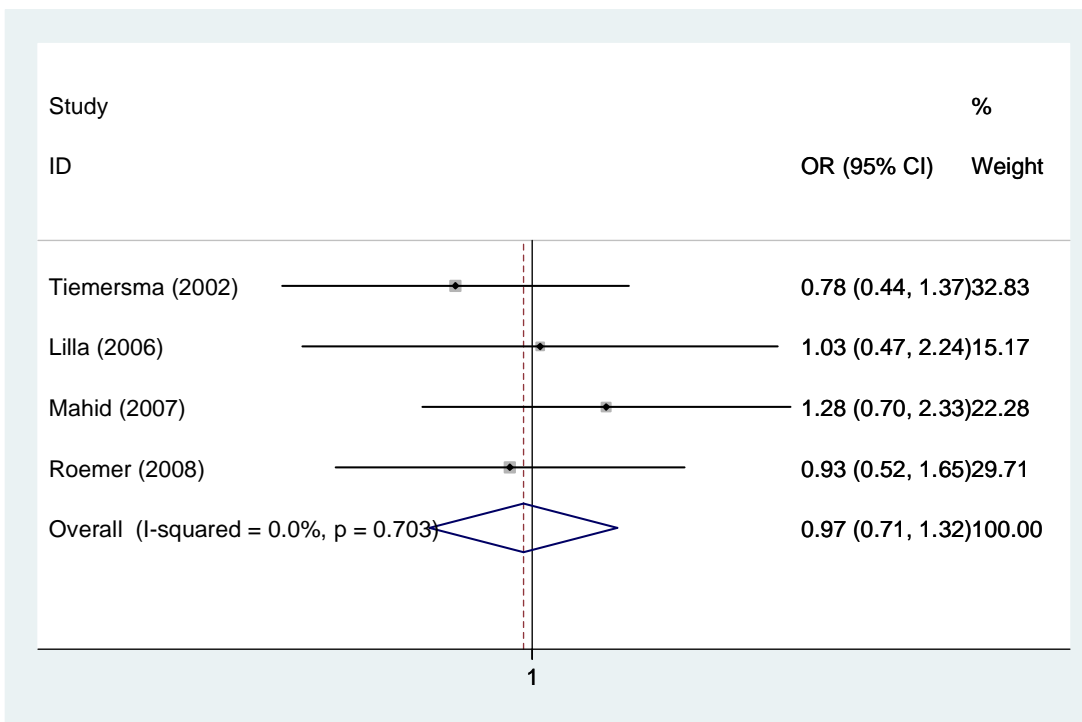
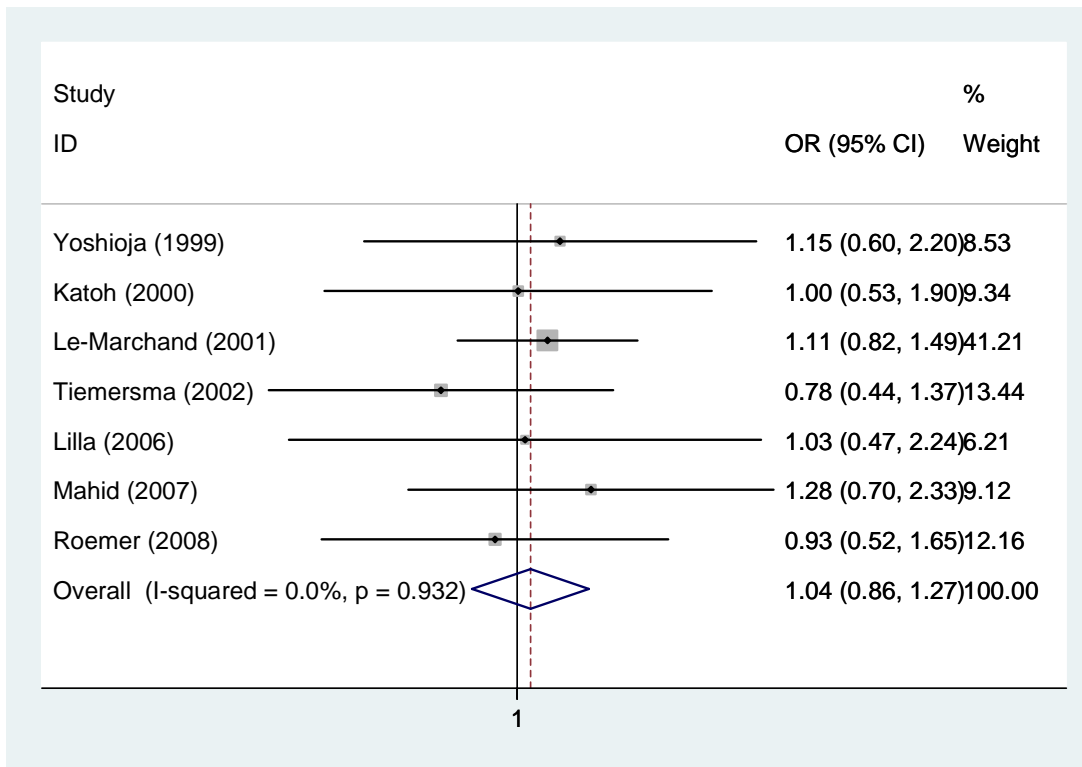
**GSTT1 deletion Dominant model: wt/var & var/var vs. wt/wt & wt/var (random model) [Second graph in white only populations]**



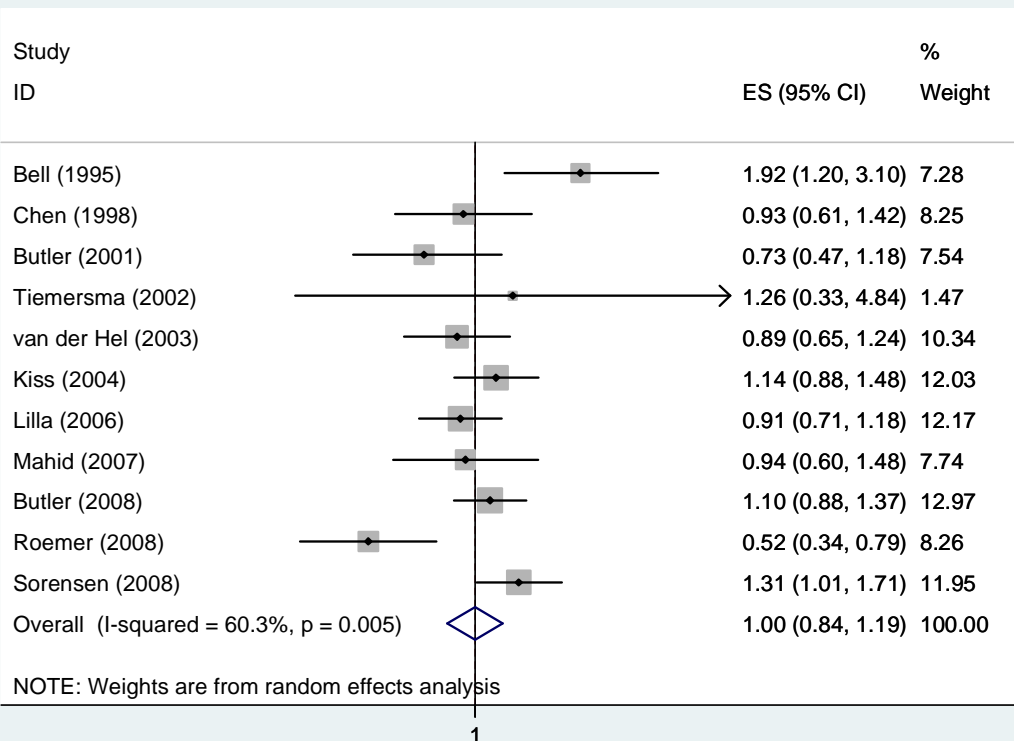
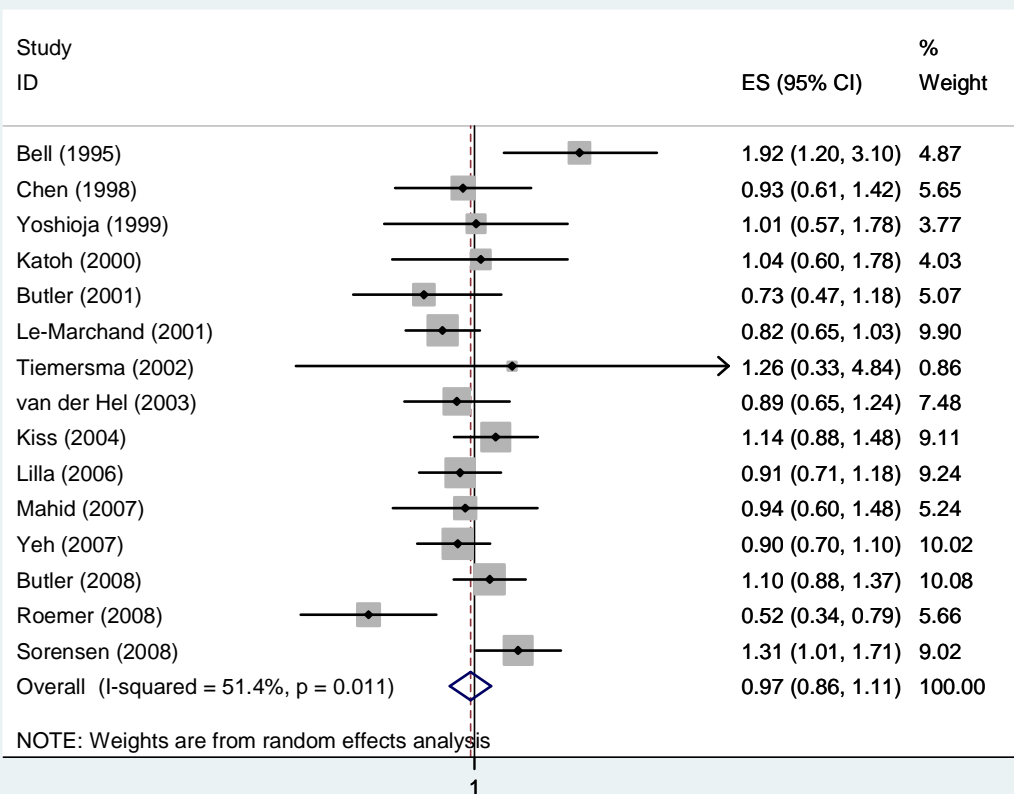
**NAT1 phenotype Additive model: wt/var vs. wt/wt (fixed model) [Second graph in white only populations]**



**NAT1 phenotype Additive model: var/var vs. wt/wt (fixed model) [Second graph in white only populations]**



**NAT1 phenotype Recessive model: var/var vs. wt/wt & wt/var (fixed model) [Second graph in white only populations]**



**NAT1 phenotype Dominant model: wt/var & var/var vs. wt/wt & wt/var (random model)**  
**[Second graph in white only populations]**