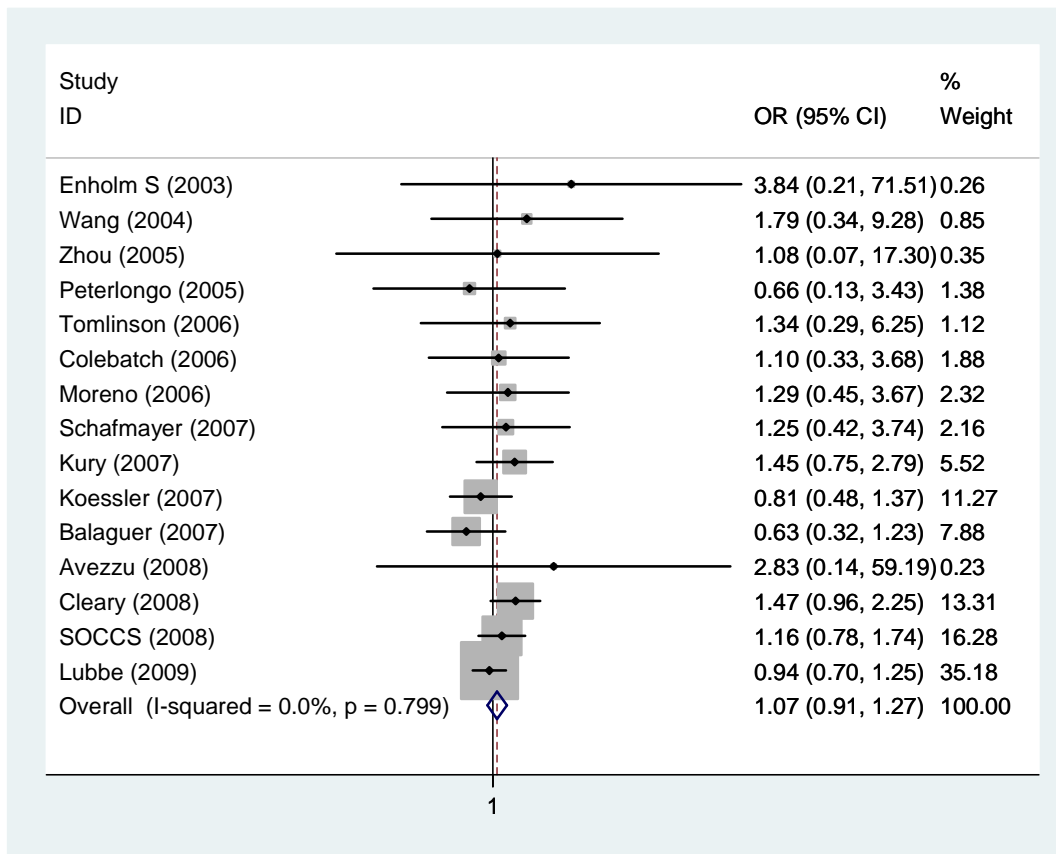
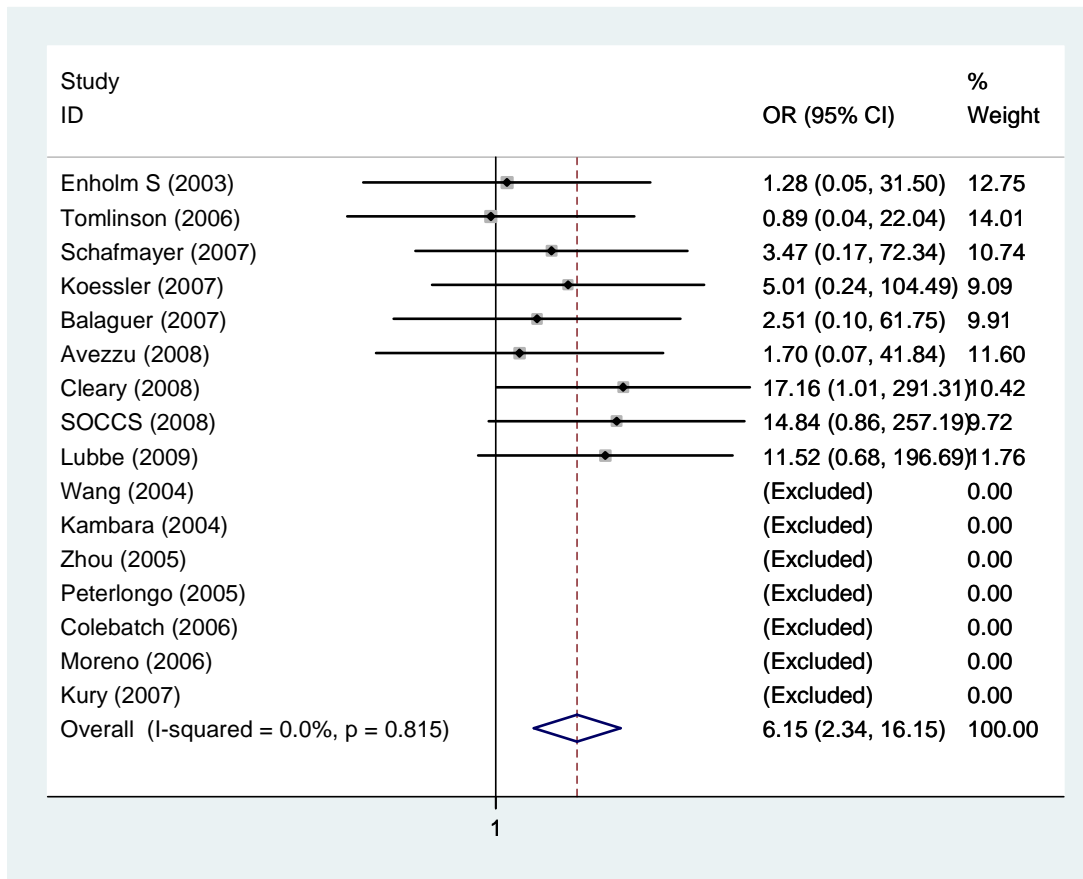


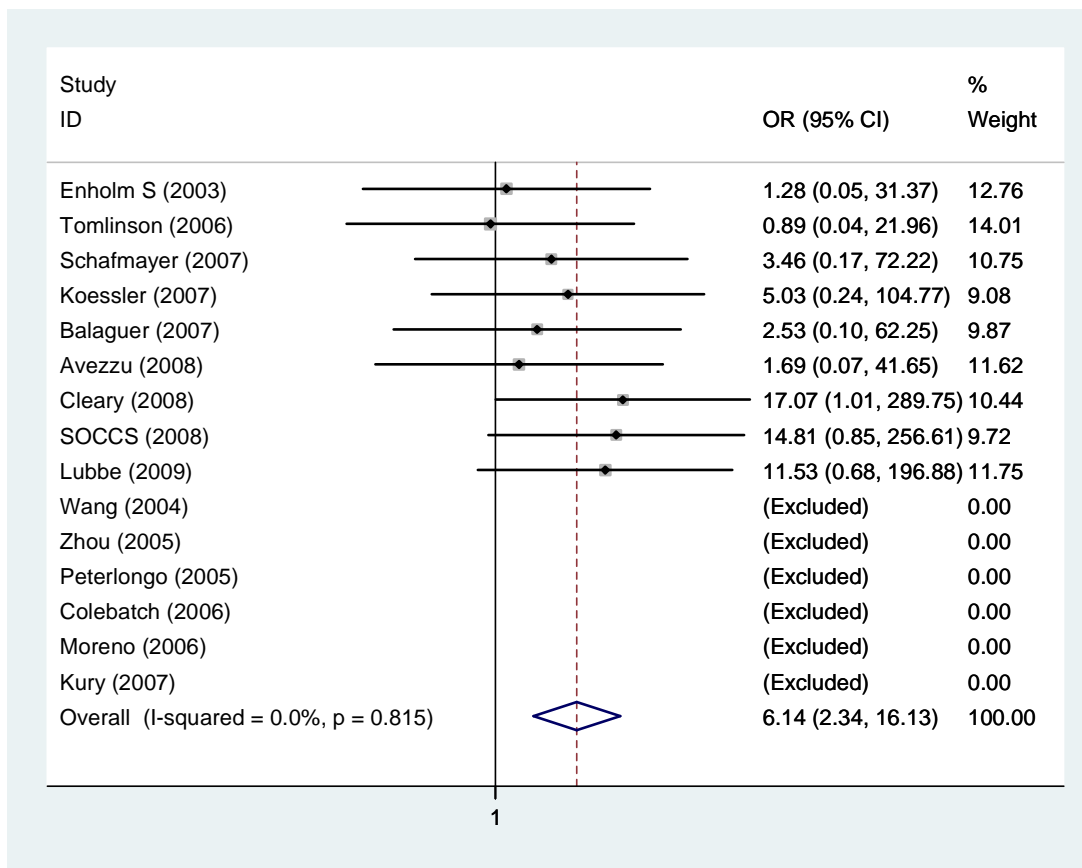
## FOREST PLOTS



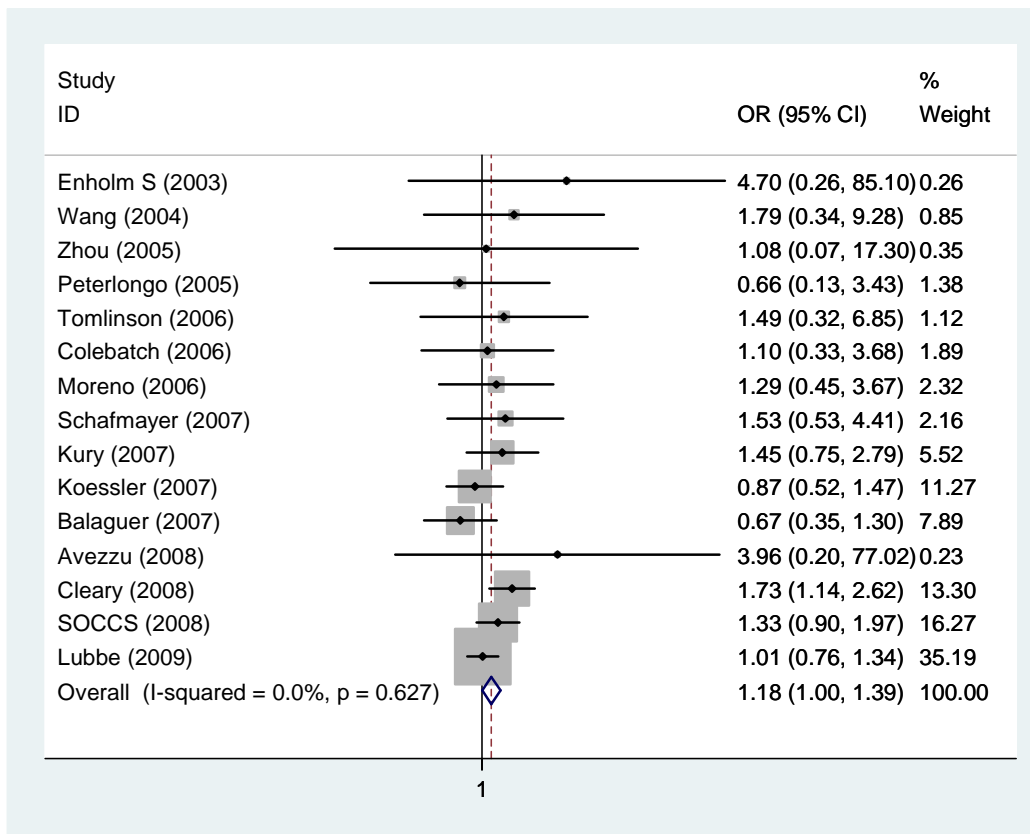
MUTYH rs36053993 Additive model: wt/var vs. wt/wt (fixed model)



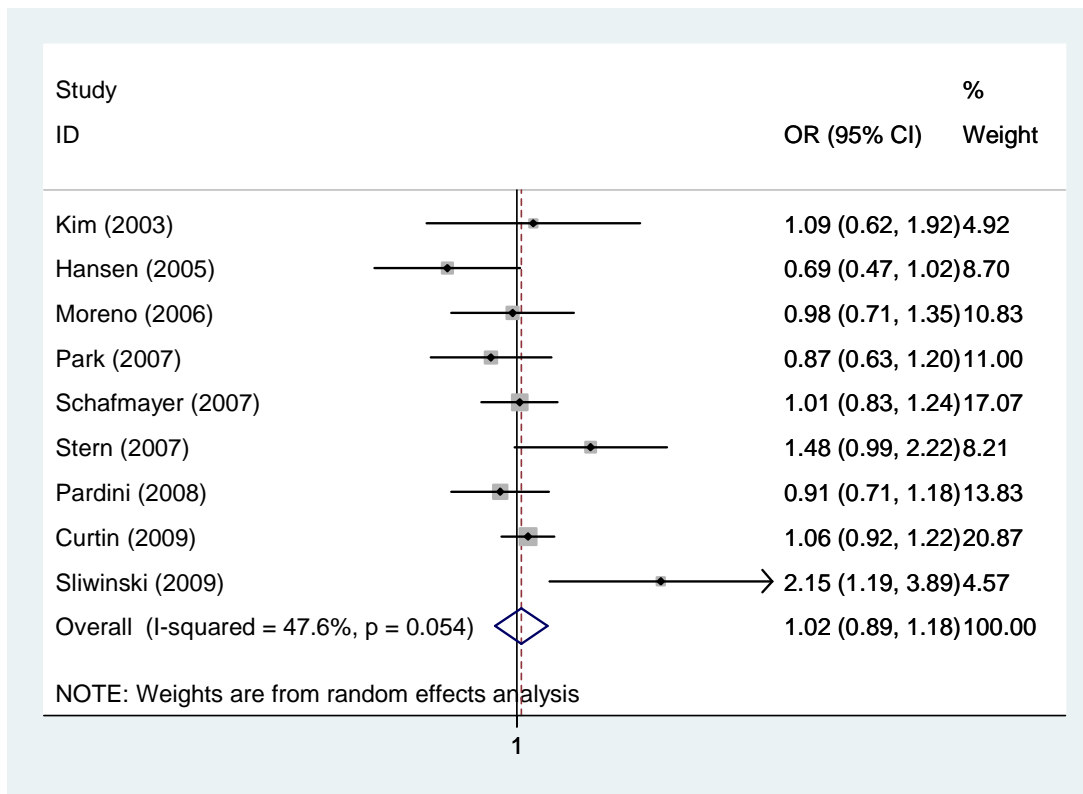
**MUTYH rs36053993 Additive model: var/var vs. wt/wt (fixed model)**



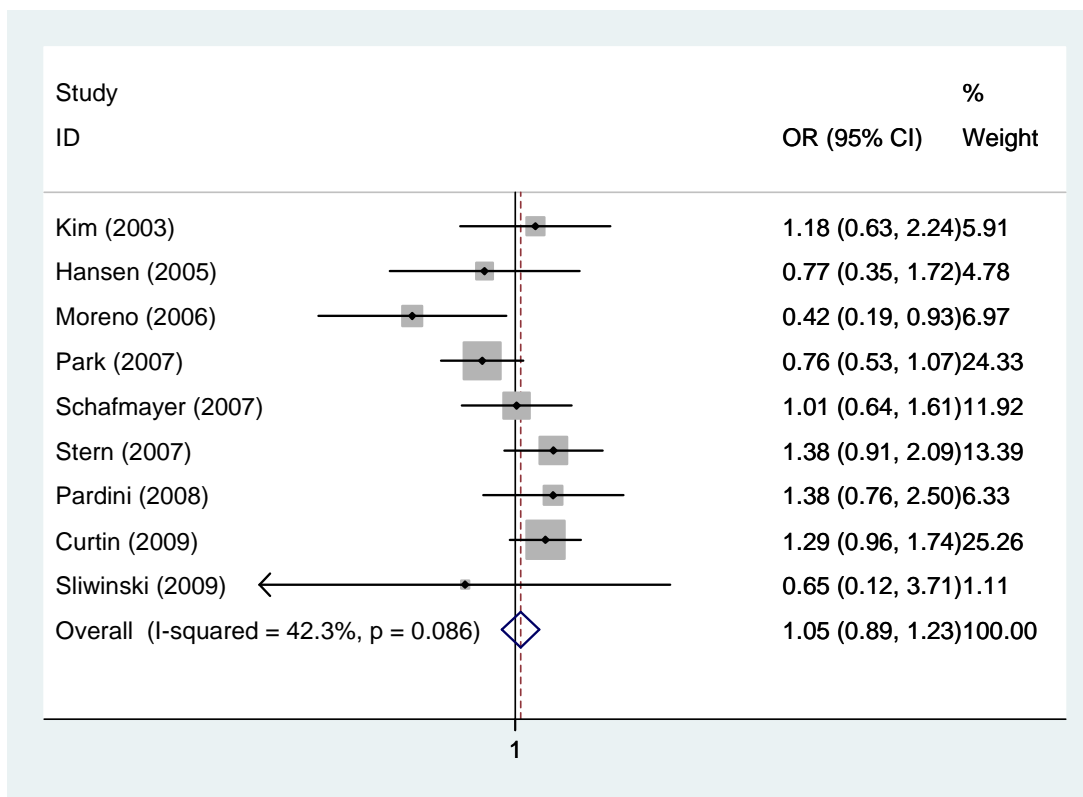
**MUTYH rs36053993 Recessive model: var/var vs. wt/wt & wt/var (fixed model)**



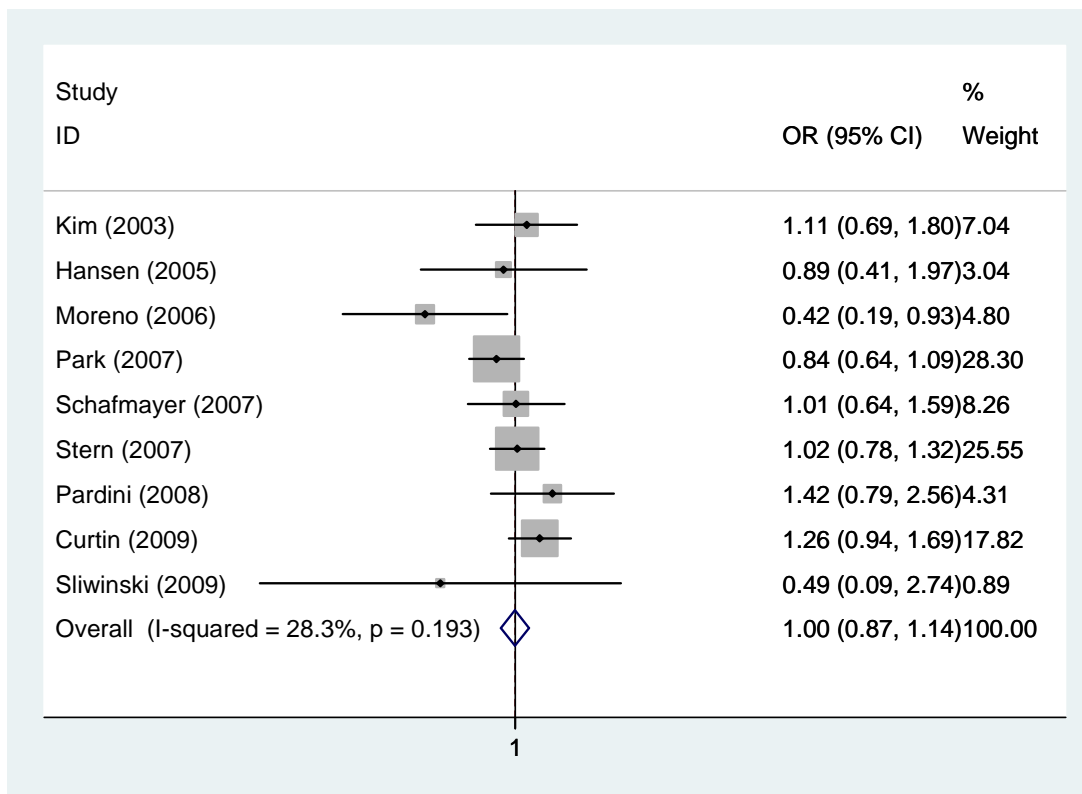
**MUTYH rs36053993 Dominant model: wt/var & var/var vs. wt/wt & wt/var (fixed model)**



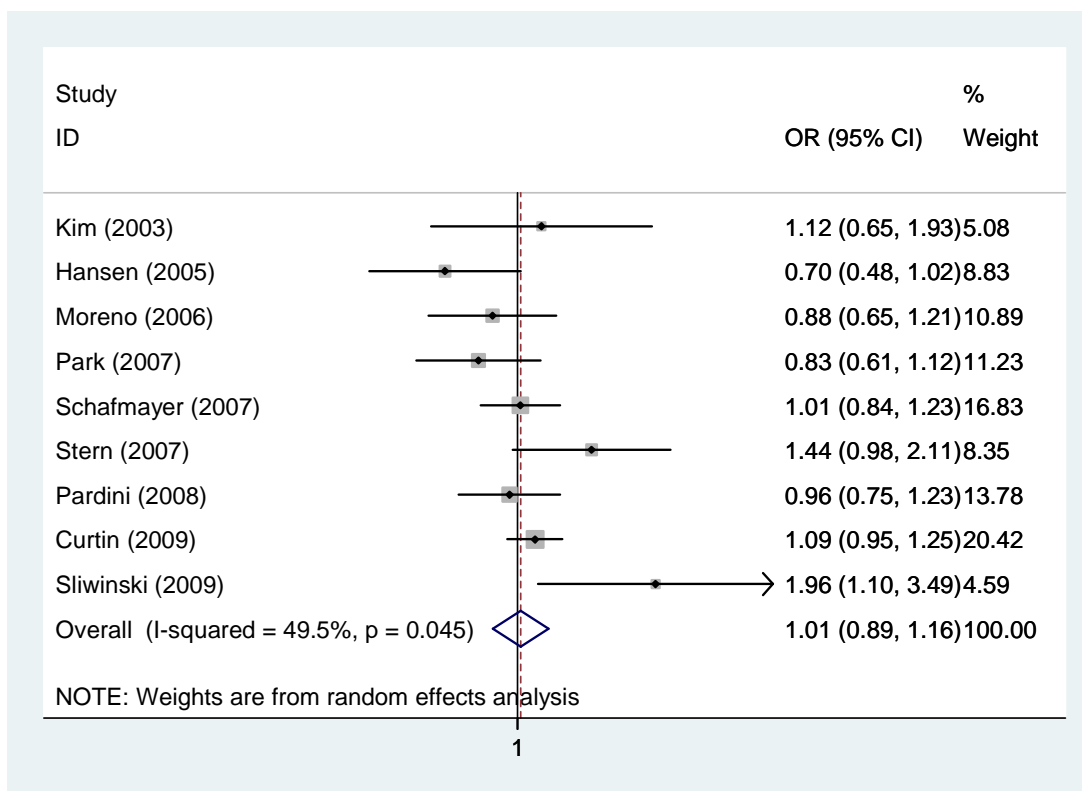
**OGG1 Ser326Cys Additive model: wt/var vs. wt/wt (random model)**



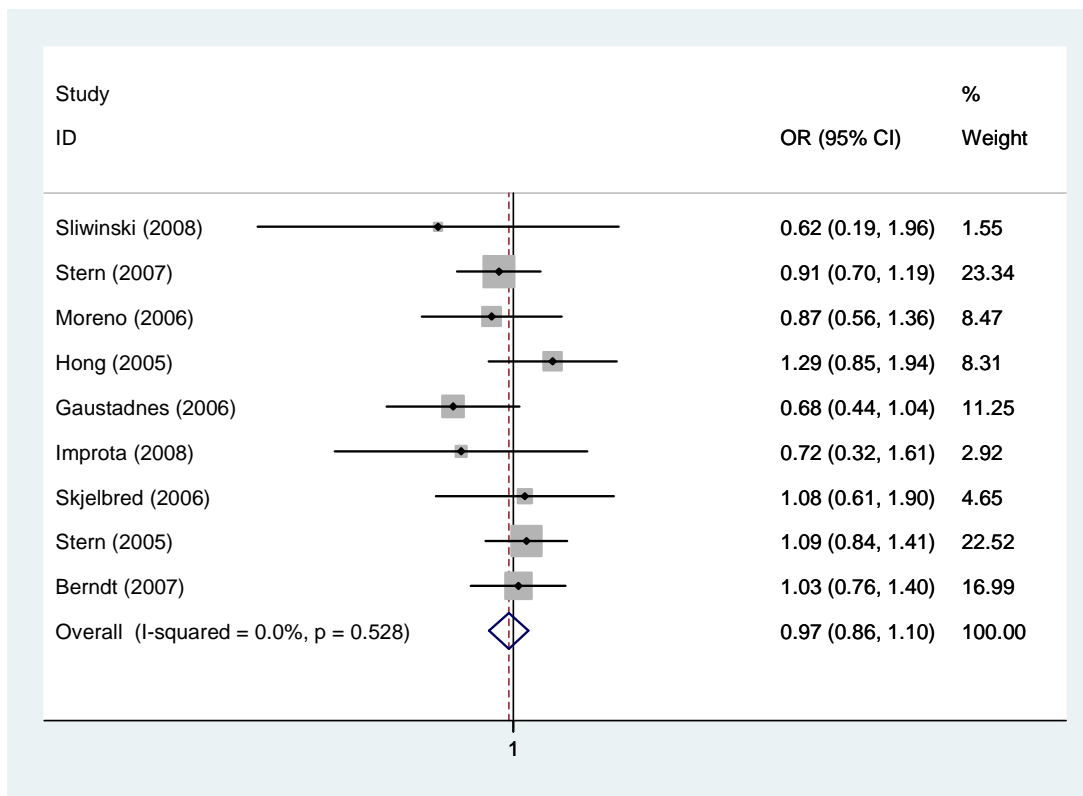
**OGG1 Ser326Cys Additive model: var/var vs. wt/wt (fixed model)**



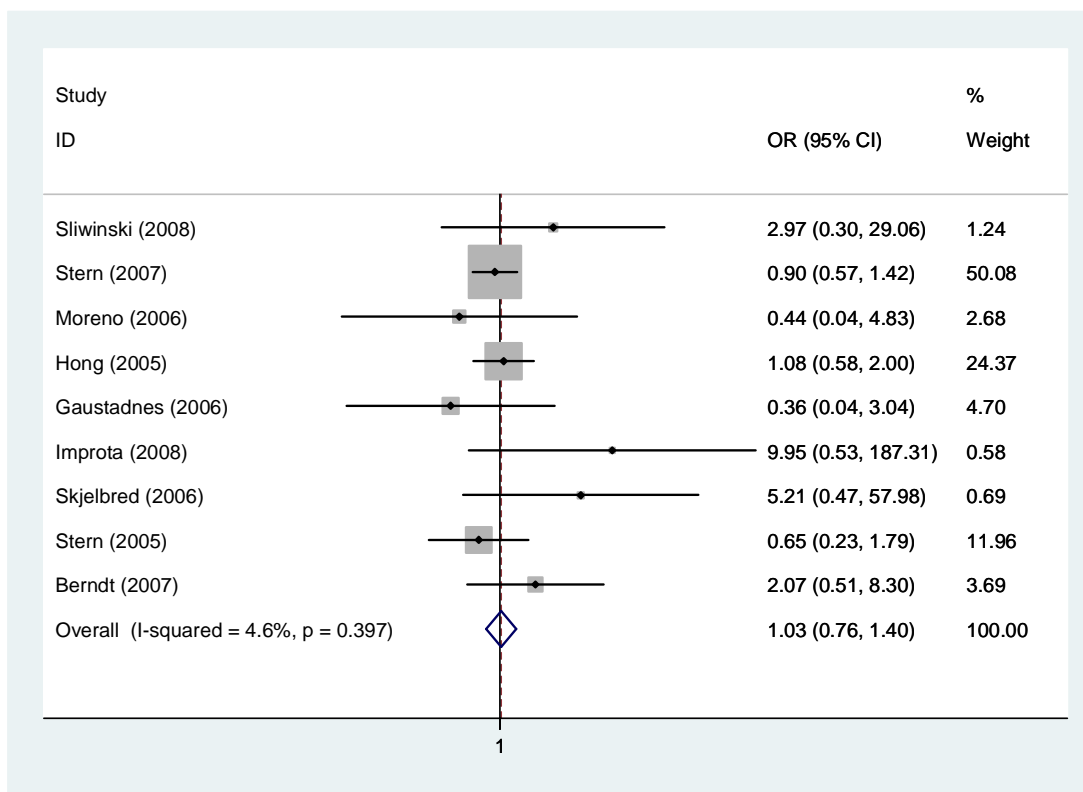
**OGG1 Ser326Cys Recessive model: var/var vs. wt/wt & wt/var (fixed model)**



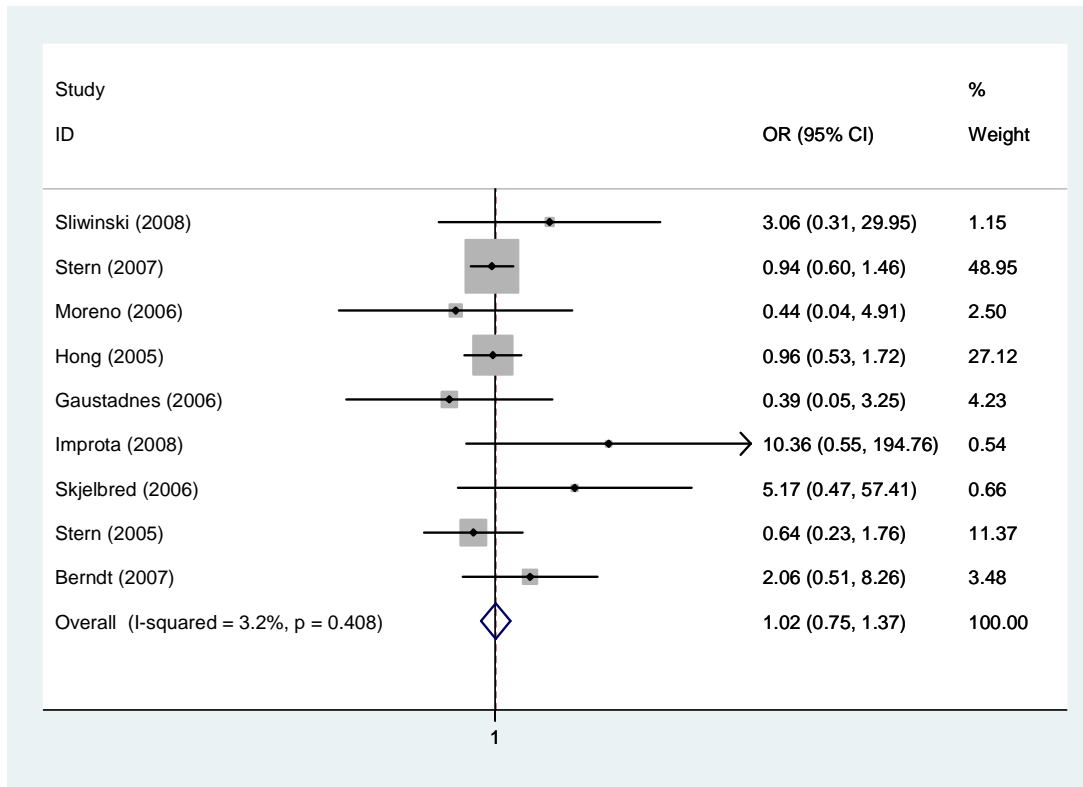
**OGG1 Ser326Cys Dominant model: wt/var & var/var vs. wt/wt & wt/var (random model)**



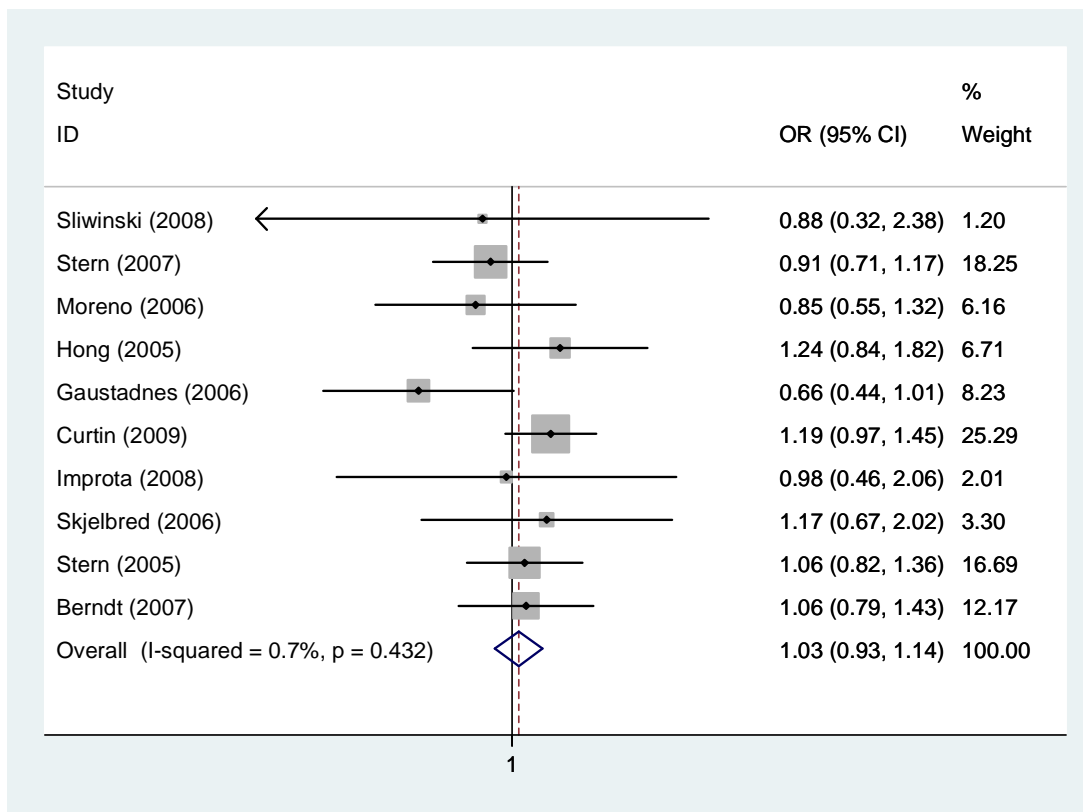
**XRCC1 Arg194Trp Additive model: wt/var vs. wt/wt (fixed model)**



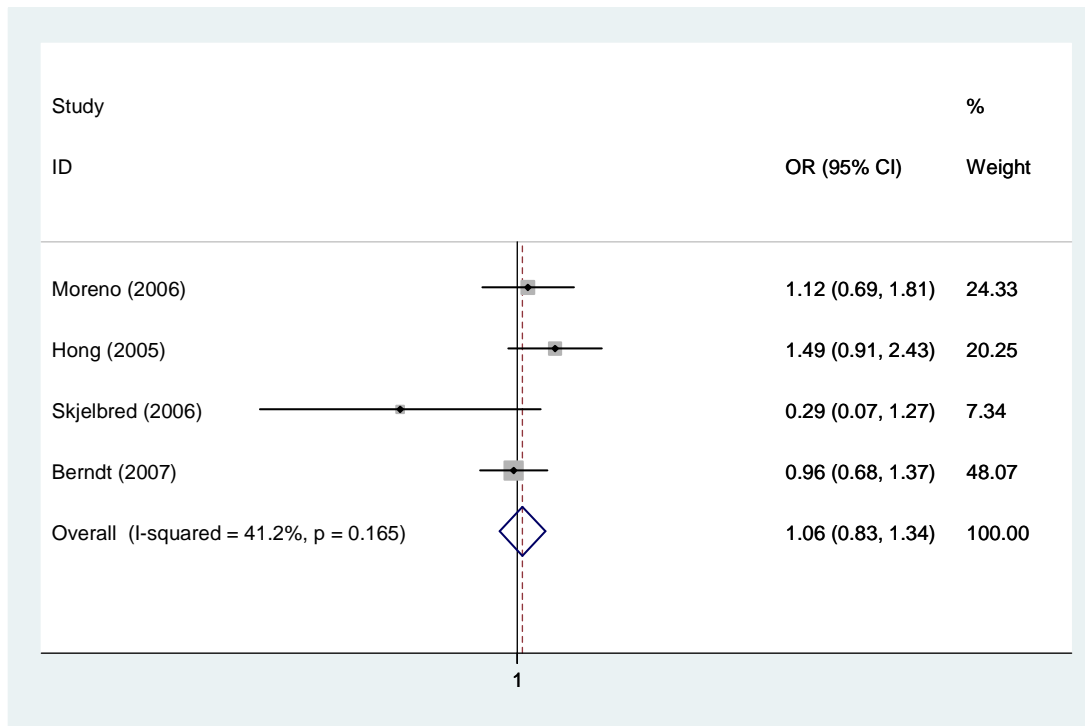
**XRCC1 Arg194Trp Additive model: var/var vs. wt/wt (fixed model)**



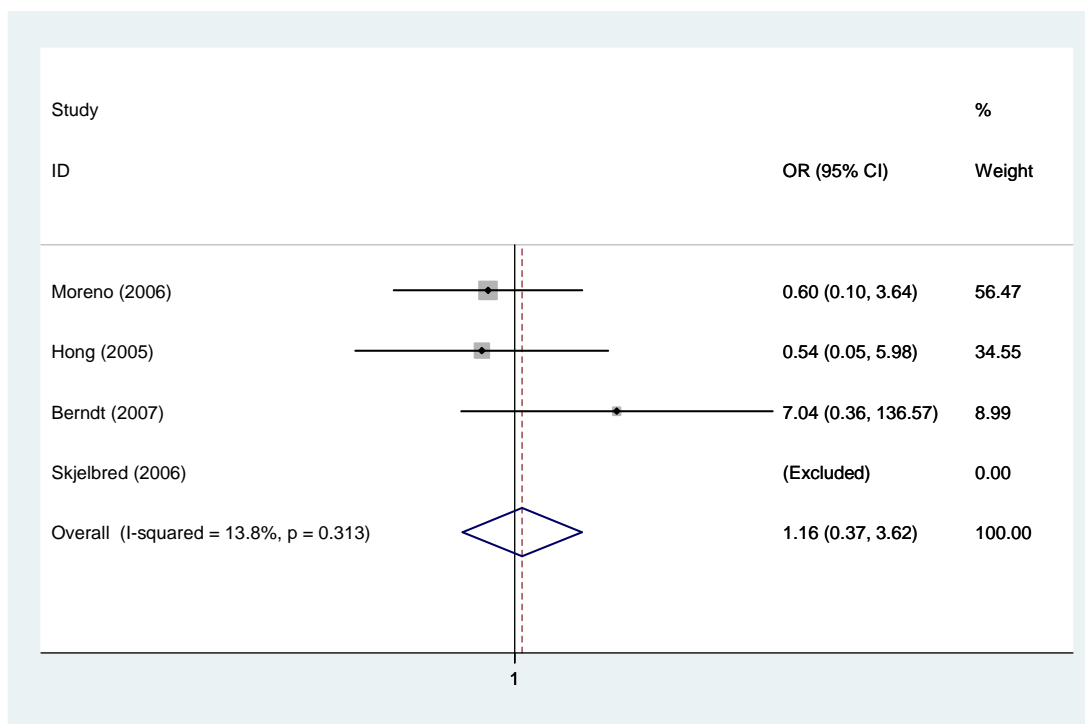
**XRCC1 Arg194Trp Recessive model: var/var vs. wt/wt & wt/var (fixed model)**



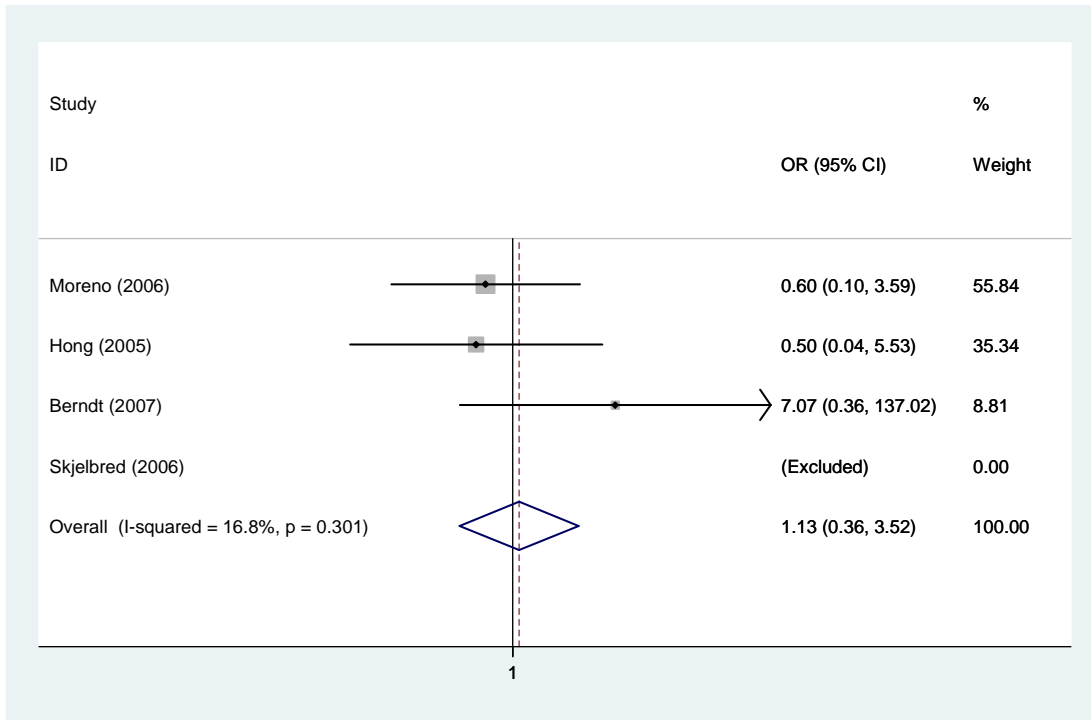
**XRCC1 Arg194Trp Dominant model: wt/var & var/var vs. wt/wt & wt/var (fixed model)**



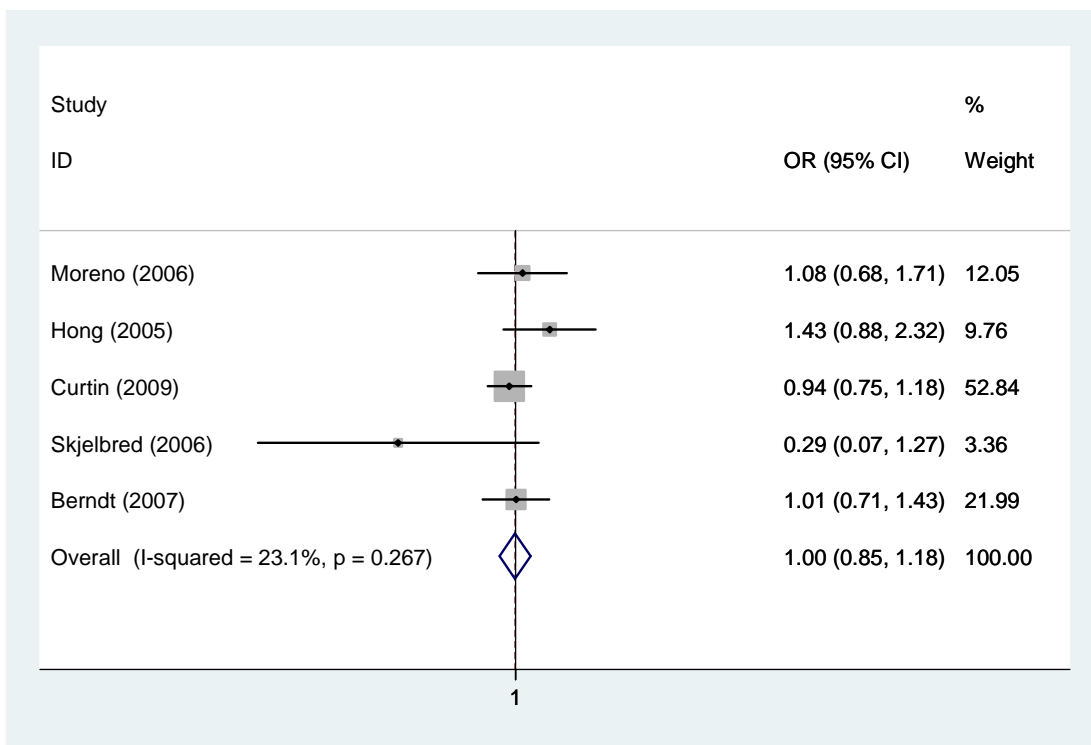
**XRCC1 Arg280His Additive model: wt/var vs. wt/wt (fixed model)**



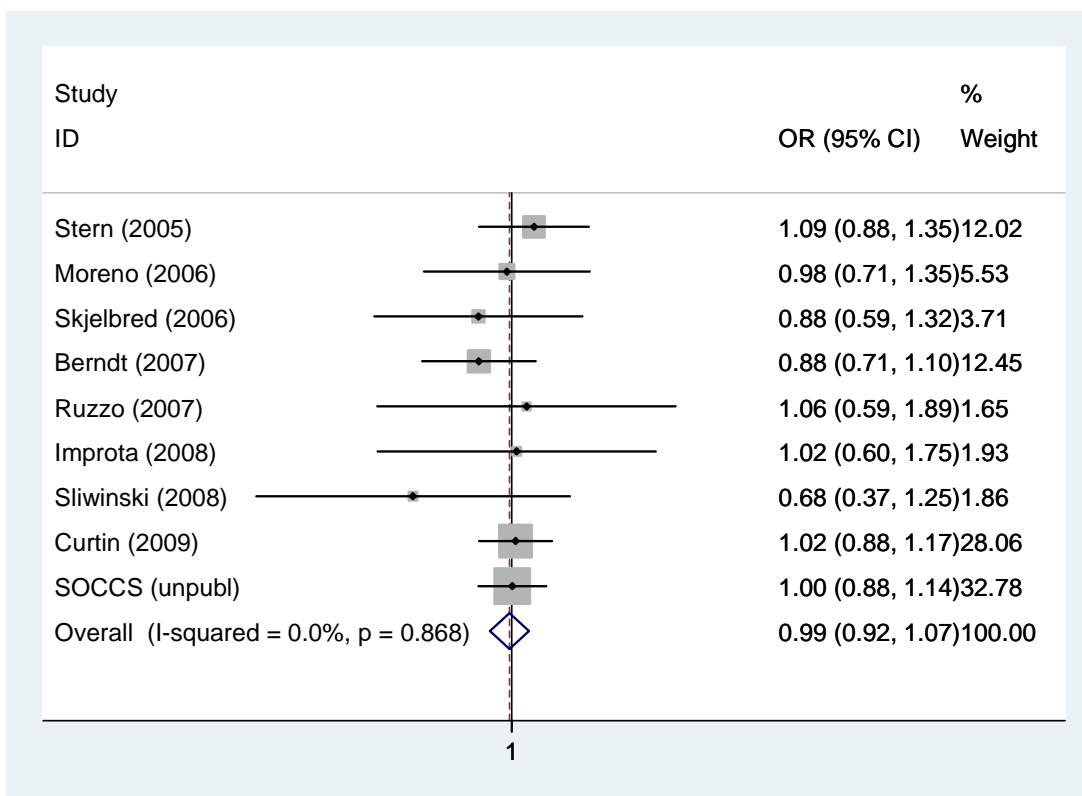
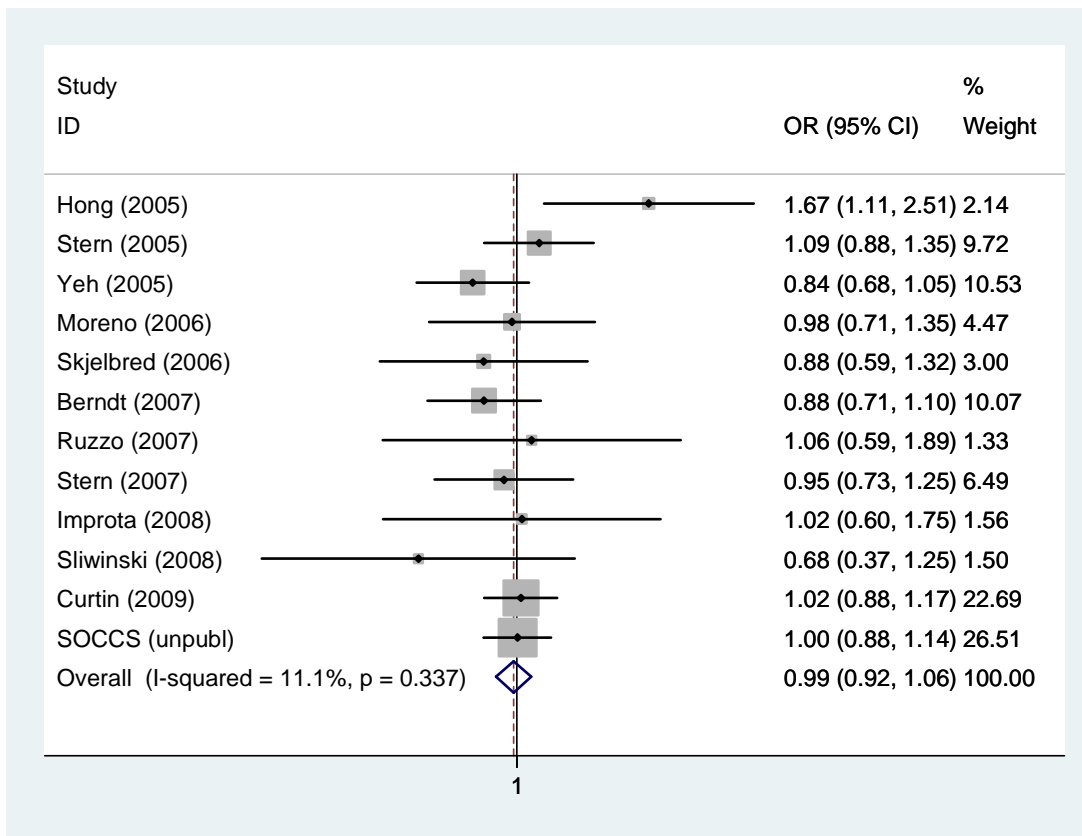
**XRCC1 Arg280His Additive model: var/var vs. wt/wt (fixed model)**



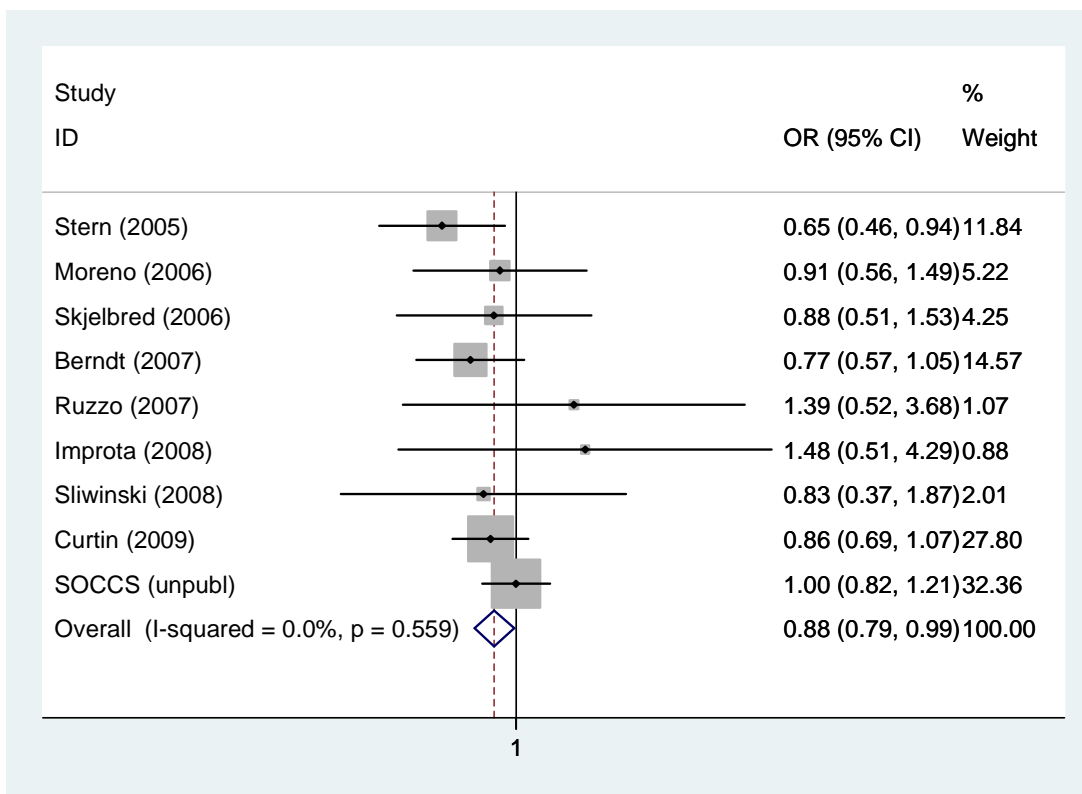
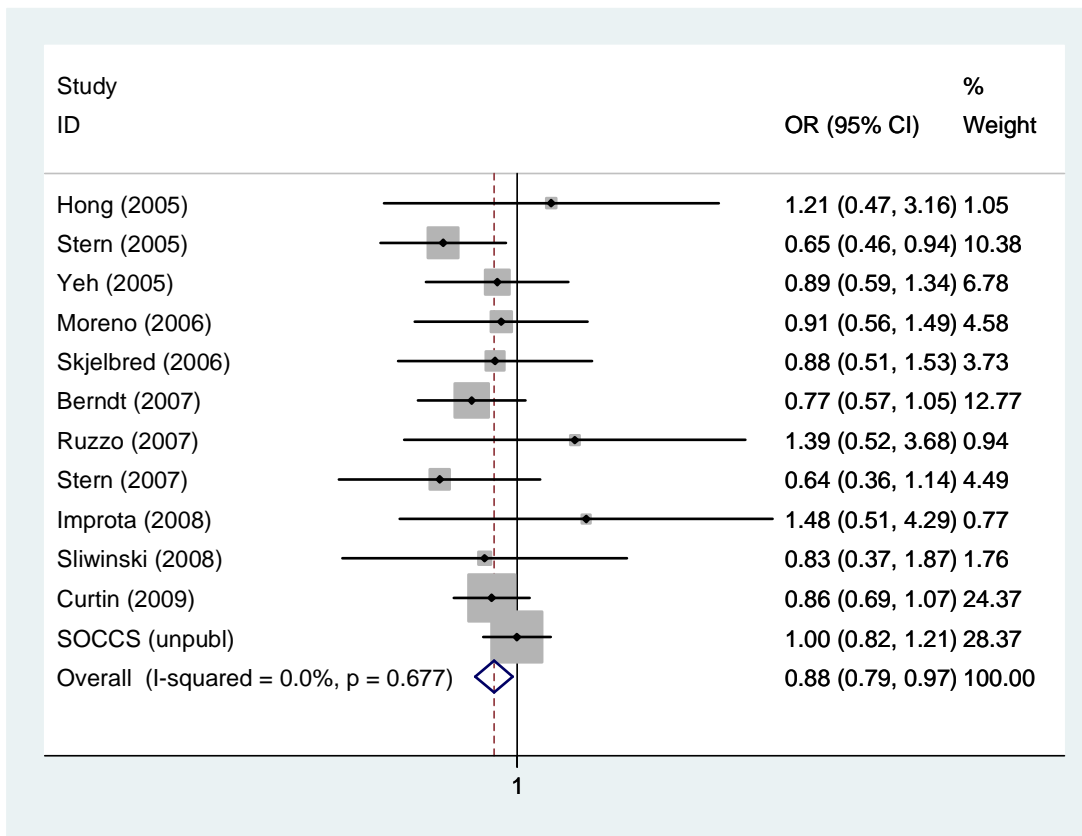
**XRCC1 Arg280His Recessive model: var/var vs. wt/wt & wt/var (fixed model)**



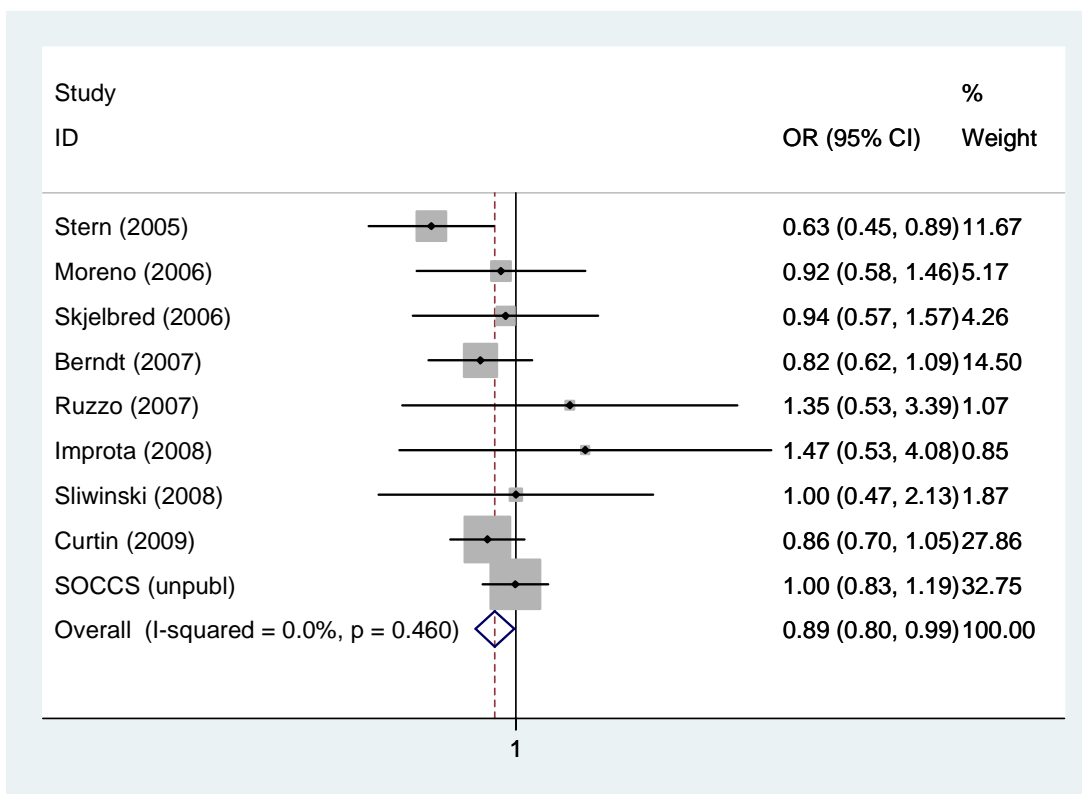
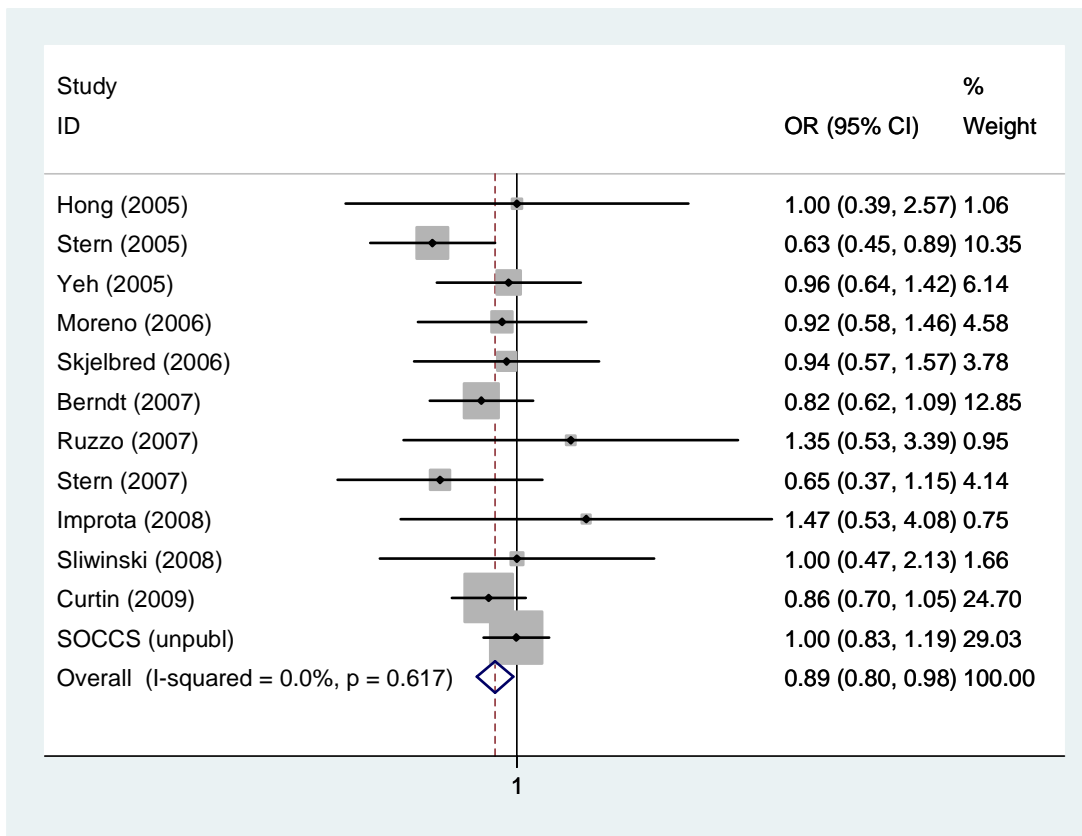
**XRCC1 Arg280His Dominant model: wt/var & var/var vs. wt/wt & wt/var (fixed model)**



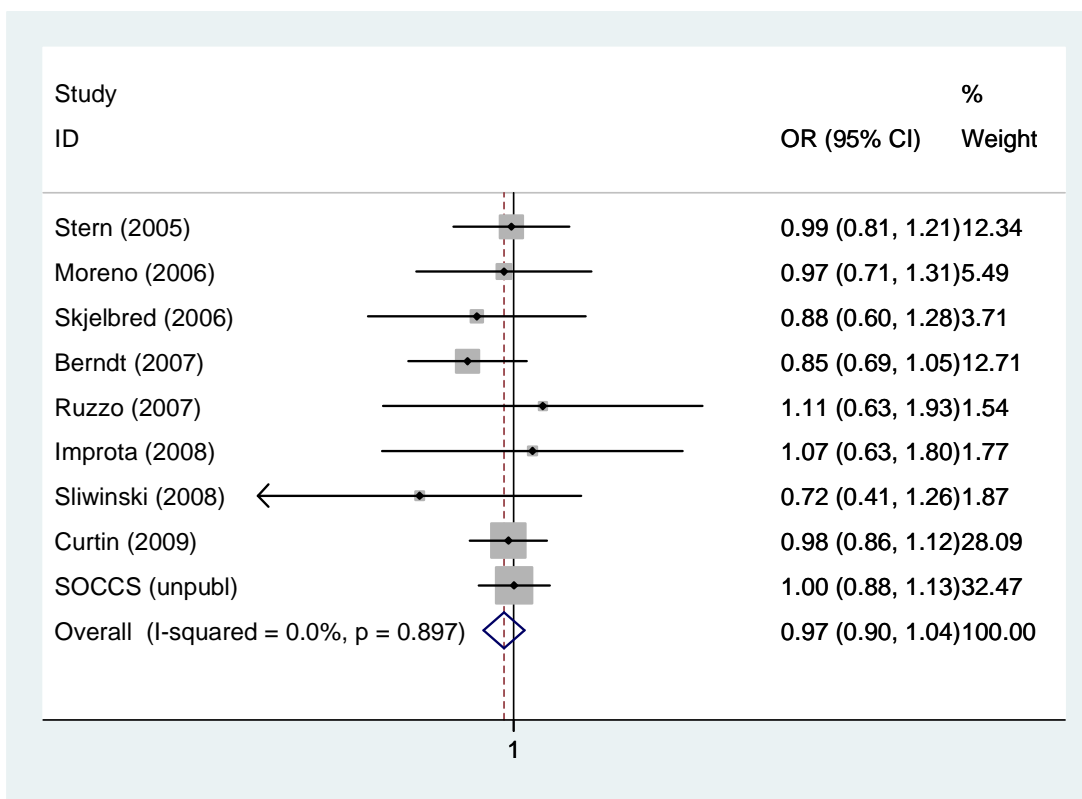
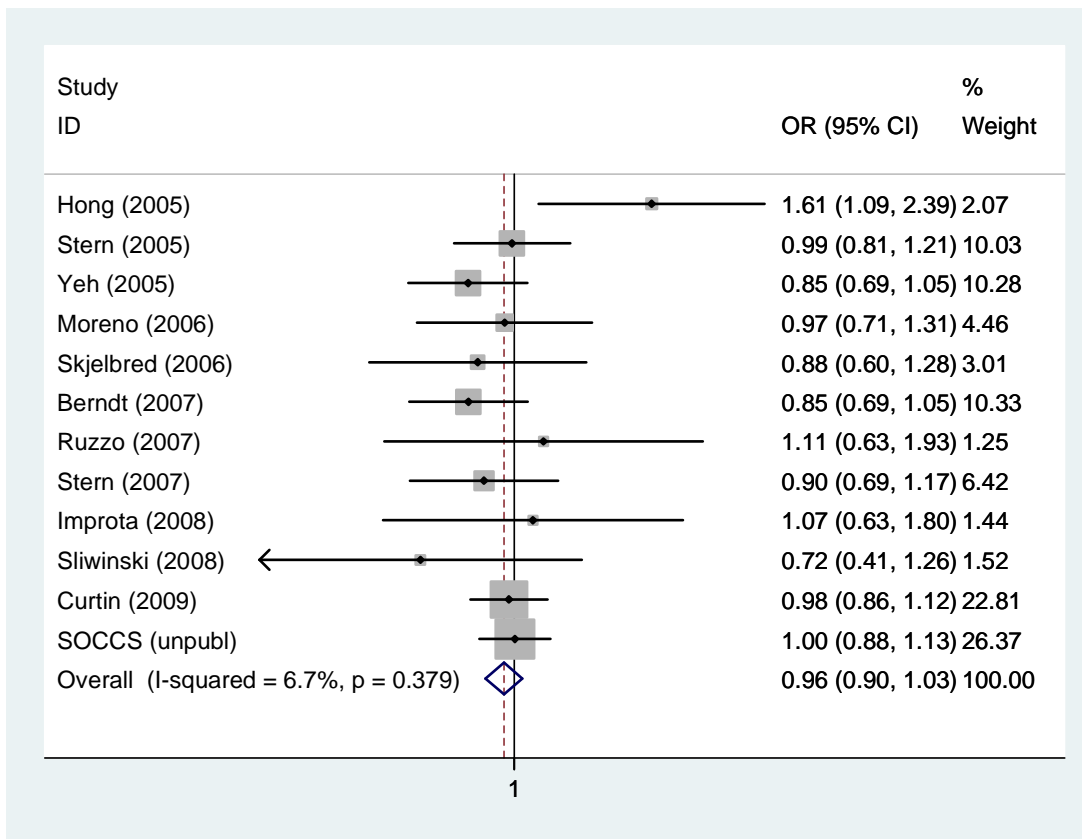
**XRCC1 Arg399Gln Additive model: wt/var vs. wt/wt (fixed model) [Second graph in white only populations]**



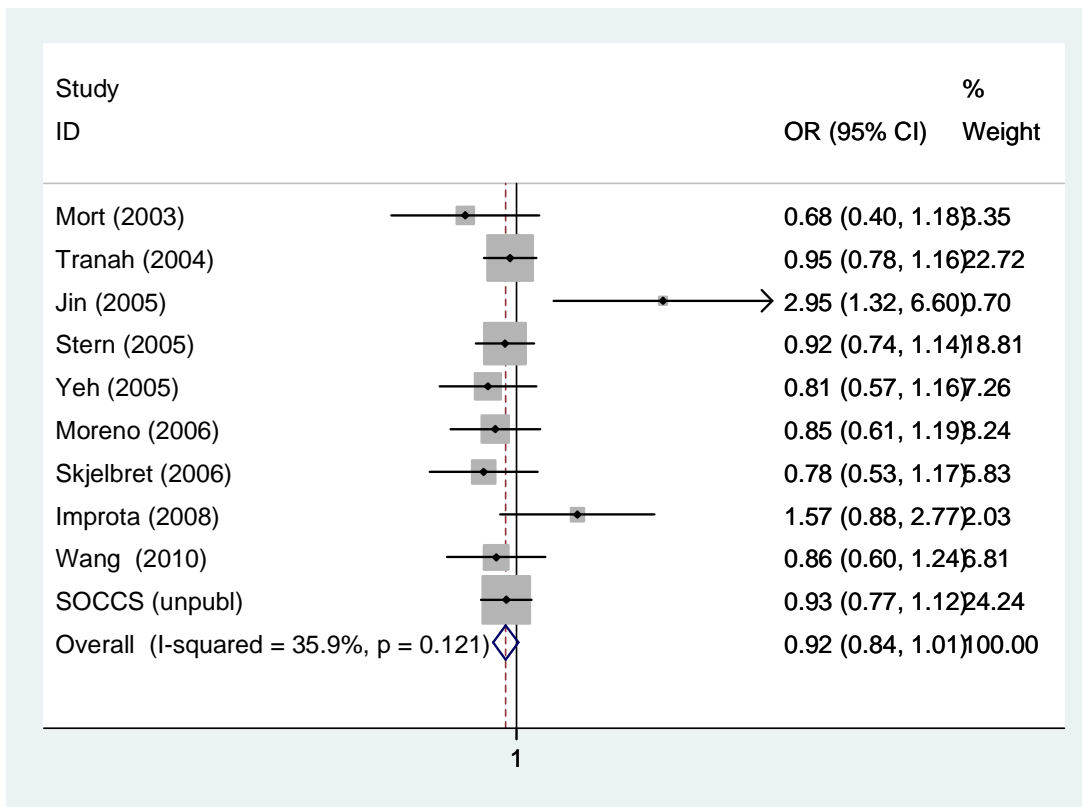
**XRCC1 Arg399Gln Additive model: var/var vs. wt/wt (fixed model) [Second graph in white only populations]**



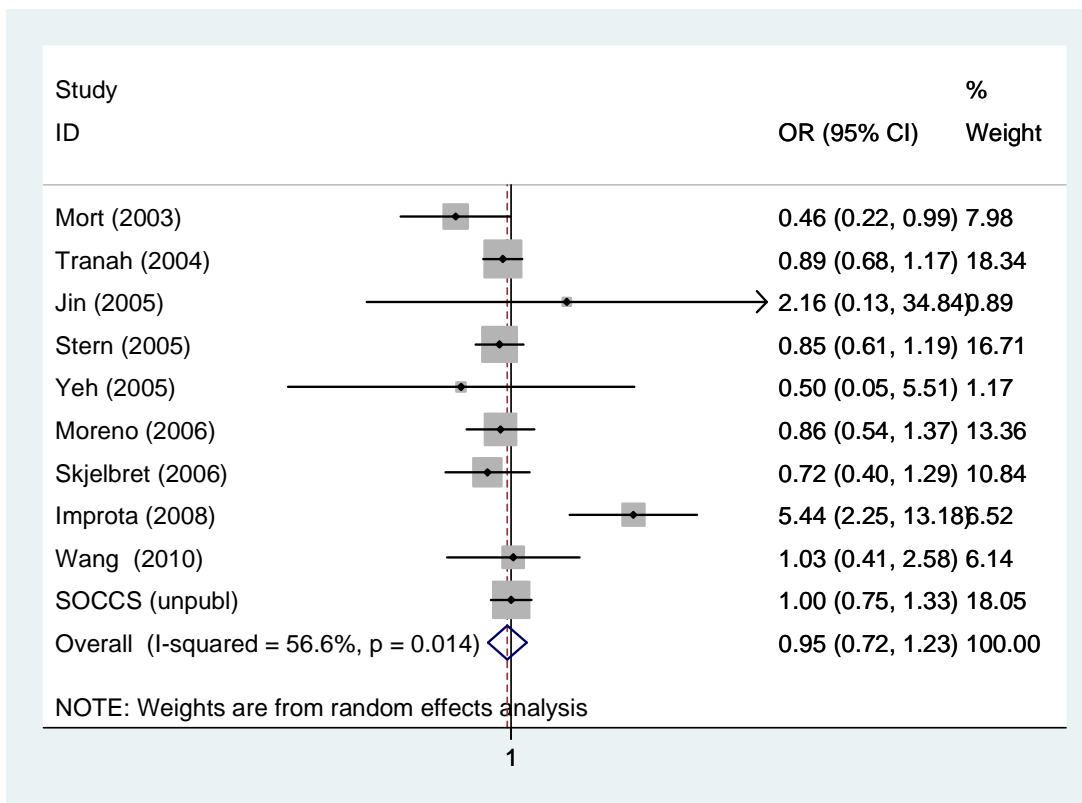
**XRCC1 Arg399Gln Recessive model: var/var vs. wt/wt & wt/var (fixed model) [Second graph in white only populations]**



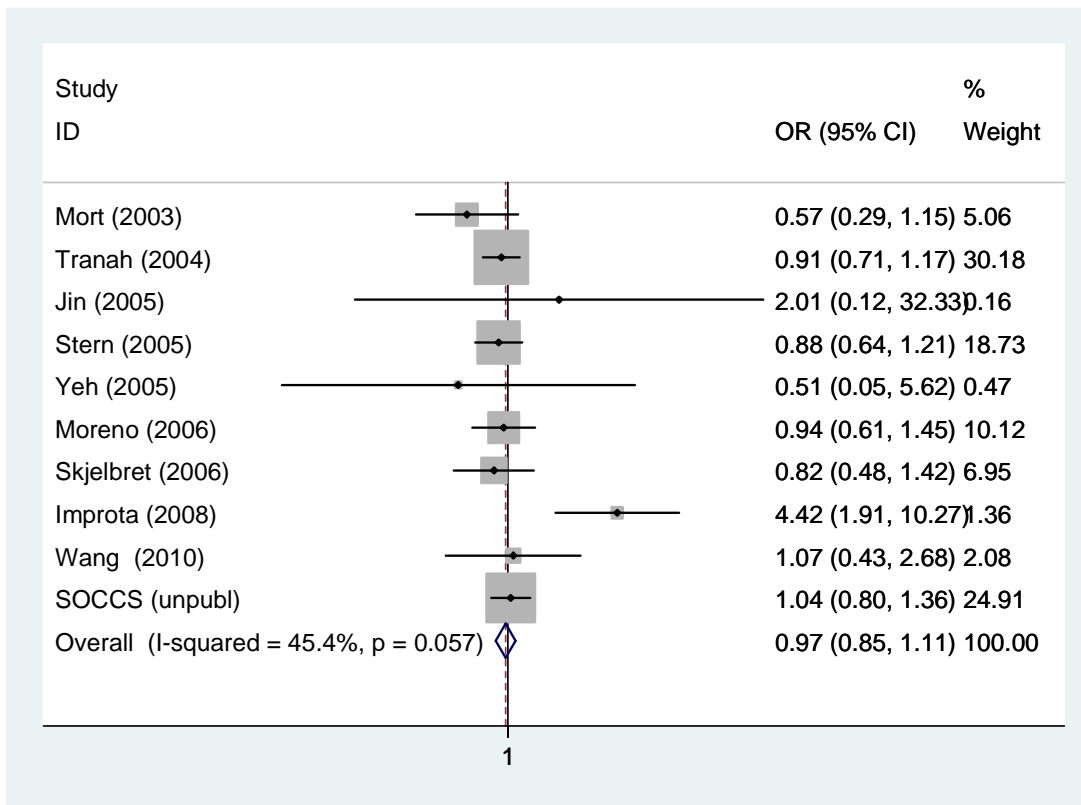
**XRCC1 Arg399Gln Dominant model: wt/var & var/var vs. wt/wt & wt/var (fixed model) [Second graph in white only populations]**



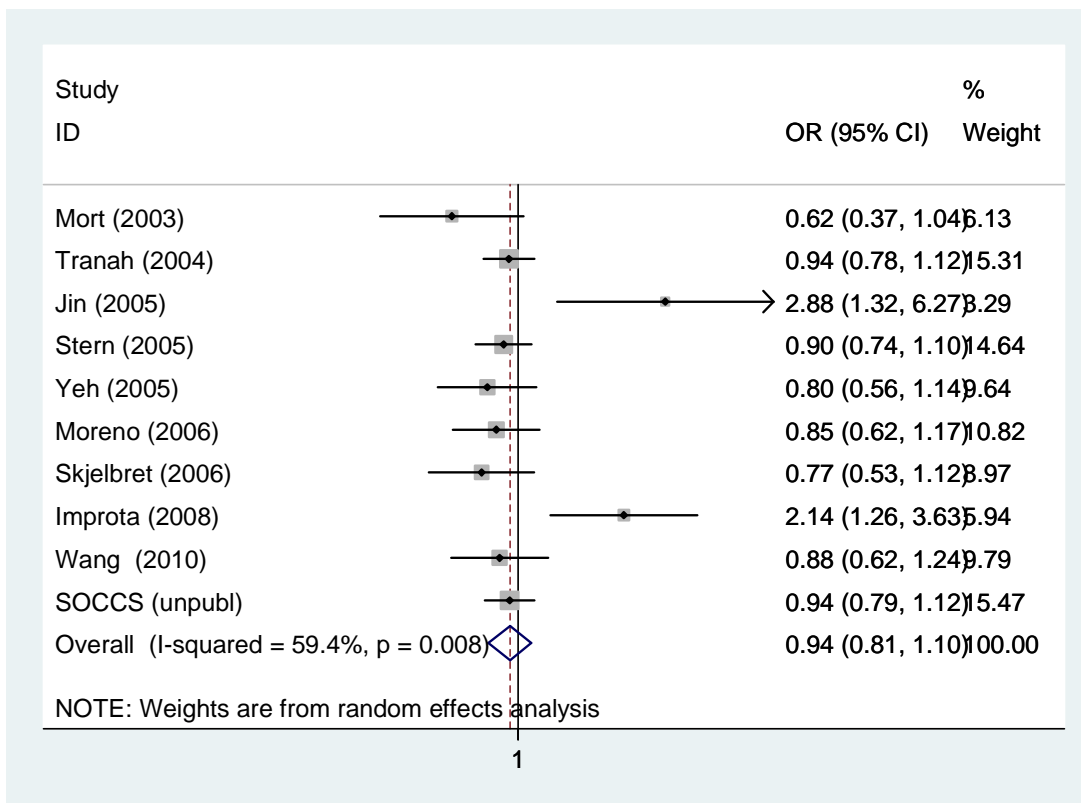
**XRCC3 Thr241Met Additive model: wt/var vs. wt/wt (fixed model)**



**XRCC3 Thr241Met Additive model: var/var vs. wt/wt (random model)**



**XRCC3 Thr241Met Recessive model: var/var vs. wt/wt & wt/var (fixed model)**



**XRCC3 Thr241Met Dominant model: wt/var & var/var vs. wt/wt & wt/var (random model)**