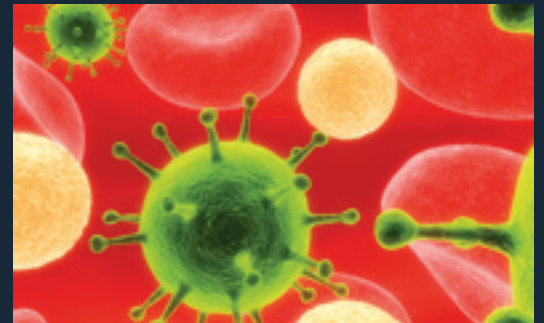


THE UNIVERSITY *of* EDINBURGH
Global Health Academy

Postgraduate Opportunity in **Master of Public Health**

from the Centre for Population Health Sciences at the University of Edinburgh.

This on-campus, one year taught MPH will offer training across the broad range of public health activity and develop your research skills for a future career in public health research.



Developing the research skills to meet the public health challenges of the 21st century

Public Health is the science and art of preventing disease, prolonging life and promoting health through the organised efforts of society. The taught MPH degree builds on a long history in and an excellent reputation for taught post graduate training in public health sciences. The education offered aims to be relevant to a range of professionals and researchers, and to fulfil the knowledge and research training needs of those wishing to address the contemporary challenges of carrying out research in the public health field. The programme is designed for those who wish to gain an appreciation of how different scientific disciplines can be used to structure enquiry and develop the knowledge base for research and professional practice in epidemiology, public health and social science, ethics and health.

Overview

The programme runs full-time over 12 months or part-time over two to three years. The year is divided into two semesters during which taught courses are delivered and then students complete a dissertation between May and August. This may involve either a review of existing research or analysis of data from a secondary source or collected for the purpose of the dissertation. The programme is structured so that in the first semester students take core courses to help them develop skills and understanding which will enable them to progress in the elective courses in the second semester. Teaching is by lectures, seminars and workshops. Course assessments are mainly essay-based, with a few examinations and presentations.

Compulsory courses – 50 credits

- Introduction to Epidemiology
- Introduction to Qualitative Research
- Introduction to Research Ethics
- Introduction to Systematic Reviews
- Introduction to Statistics

Elective courses – 70 credits

- Advanced Protocol Development (10)
- Clinical Trials (10)
- Communicable Disease Control and Environmental Health (10)
- Epidemiology for Public Health (10)
- Extended Epidemiology (10)
- Further Statistics (10)
- Genetic Epidemiology (10)
- Global Burden of Mental Illness (10)
- Health Promotion (10)
- Introduction to Global Health (10)
- Palliative & End of Life Care in Local & Global Contexts (10)
- Public Health Ethics (10)
- Public Health Research: International Issues (10)
- Qualitative Research in Health (10)
- Resource Allocation and Health Economics (20)
- Sociology of Health and Illness (10)
- Statistical Modelling (10)

Optional courses from across University of Edinburgh

Subject to approval of the programme director, students may acquire credits from courses offered by School of Health in Social Science, Graduate School of Social and Political Studies or Business School.

Dissertation (60 credits)

Successful completion of the MPH requires the dissertation, normally in the form of a research report, of not more than 12,000 words.

Entry requirements

- A good second class honours degree (equivalent to UK 2.1)
- Full transcripts of studies
- Applicants whose first language is not English should have an IELTS score of 7.0 with 6.5 in each section (or equivalent).
- Personal statement (approximately 500 words addressing motivation for applying, what you hope to gain and what you can bring to the course)
- Two references, preferably academic
- Applications are welcomed on the basis of professional experience or technical qualifications. Documents must be translated to English by a certified translator.

Tuition Fee

www.ed.ac.uk/schools-departments/student-funding/tuition-fees

Scholarship places may be available, please refer to our website for further information.

Contact us if you would like to know more:

Tel: +44 (0)131 650 3227 or email the Programme Administrator at: cphspg@ed.ac.uk

Admission

Information: www.ed.ac.uk/schools-departments/student-funding/tuition-fees
Information: cphspg@ed.ac.uk